

THIS SPACE INTENTIONALLY LEFT BLANK

XXXX XXXXXXXX XX XXX XXXXXXXXXXXX XX XXXXXXXXXXXX XXXXXXXXXXXX XX XXX XXXXXXXXXXXX XXXXXXXXXXXX XXXXXX XX XXXXXXXXXXXX XXX XXX XXXXXXX XXXXXXX XX XXXXXXXXXXXX	<b>XXXXXX_XXXX</b> <b>XXXXXX</b>	DATASITE RTU CONTROL LOGIX MASTER POWER DISTRIBUTION		DWG NO EXAMPLE	DATE 02-11-09	DWG REV XX
		SHEET 1	OF XX	(P&ID)		

8

7

6

5

4

3

2

1

200

201

202

203

204

205

206

207

208

209

210

211

212

213

214

215

216

217

218

219

220

221

222

223

224

225

226

227

228

229

230

231

232

233

234

235

THIS SPACE INTENTIONALLY LEFT BLANK

THIS SPACE INTENTIONALLY LEFT BLANK

D

D

C

C

B

B

A

A

XXXX XXXXXX XX XXX XXXXXXXXXX  
XX XXXXXXXXXX XXXXXXXXXX  
XX XX XXXXXXXXXX XXXXXXXXXX  
XXXXX XX XXXXXXXXXX XXX XXX  
XXXXXX XXXXXX XX XXXXXXXXXX

XXXXXX\_XXXX  
XXXXXX

DATASITE RTU  
CONTROL LOGIX MASTER  
CONTROL SPARE

DWG XX DATE 02-11-09  
DWG NO EXAMPLE DWG REV XX

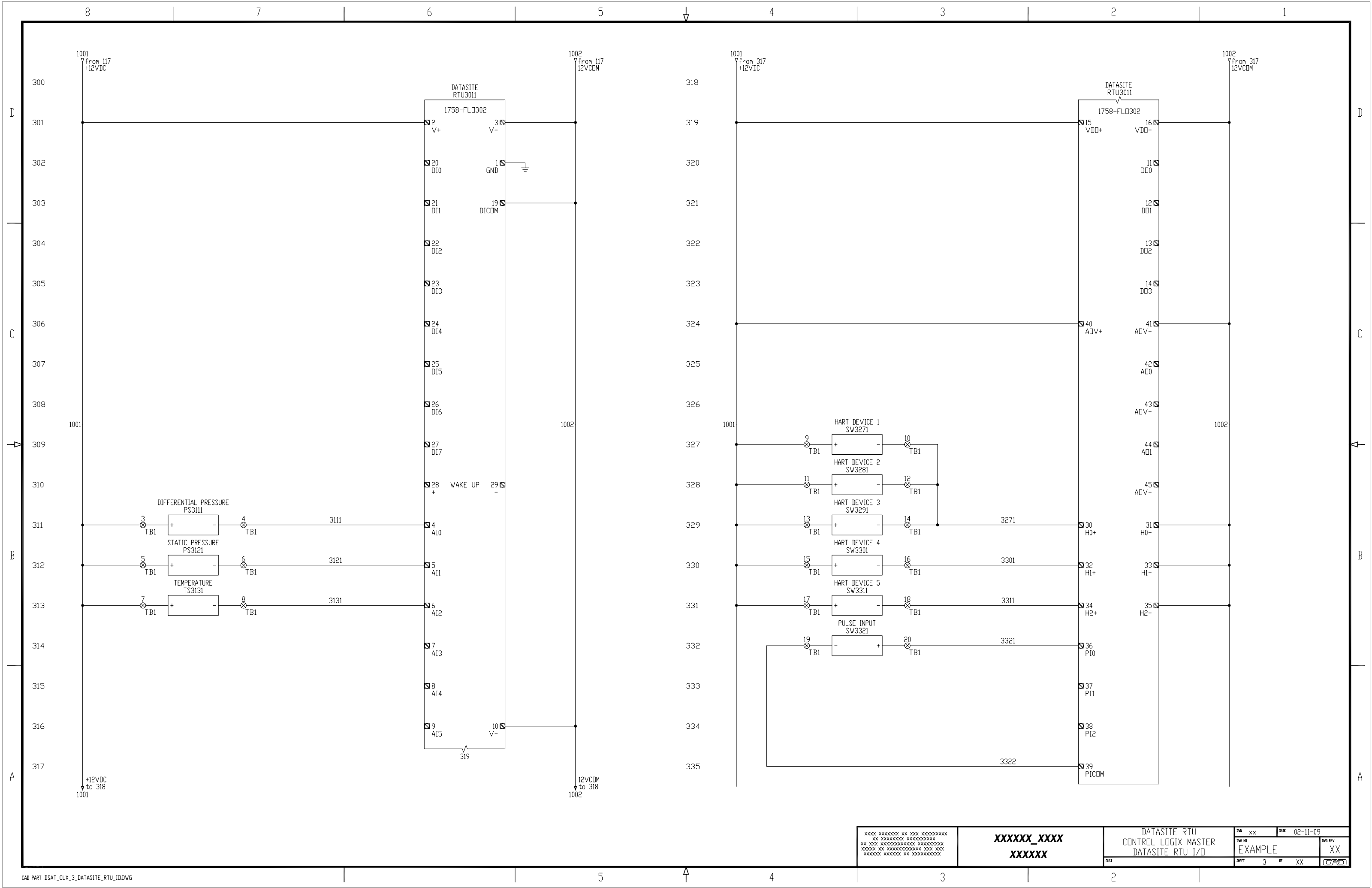
SHEET 2 OF XX

5

4

3

2



XXXX XXXXXXXX XX XXX XXXXXXXXXXXX XX XXXXXXXXXXXXXXXXXXXXXXXXXXXX XXXXX XX XXXXXXXXXXXXXXXXXXXX XXXXXXX XXXXXXX XXXXXXXXXXXXXXX	<b>XXXXXX_XXXX</b> <b>XXXXXX</b>	DATASITE RTU CONTROL LOGIX MASTER DATASITE RTU I/O		DWG NO <b>EXAMPLE</b>	DWG REV <b>XX</b>
		DATE 02-11-09	SHEET 3	OF XX	(C/A)
		DWT			

8

7

6

5

4

3

2

1

D

C

B

A

D

C

B

A

400  
401  
402  
403  
404  
405  
406  
407  
408  
409  
410  
411  
412  
413  
414  
415  
416  
417

418  
419  
420  
421  
422  
423  
424  
425  
426  
427  
428  
429  
430  
431  
432  
433  
434  
435

THIS SPACE INTENTIONALLY LEFT BLANK

THIS SPACE INTENTIONALLY LEFT BLANK

XXXX XXXXXXXX XX XXX XXXXXXXXXXXX XX XXXXXXXXXXXX XXXXXXXXXXXX XX XXX XXXXXXXXXXXX XXXXXXXXXXXX XXXXXX XX XXXXXXXXXXXX XXX XXX XXXXXXX XXXXXXX XX XXXXXXXXXXXX	<b>XXXXXX_XXXX</b> <b>XXXXXX</b>	DATASITE RTU CONTROL LOGIX MASTER I/O SPARE		DWG XX	DATE 02-11-09
		DWT	SHEET 4 OF XX	DWG REV EXAMPLE	XX

5

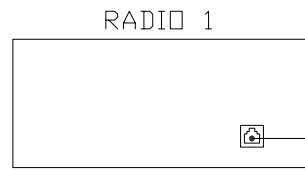
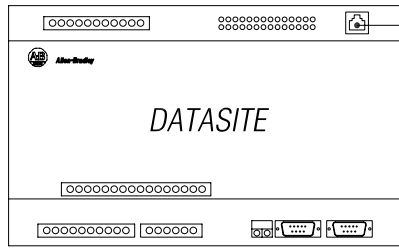
4

3

2

REMOTE STATION

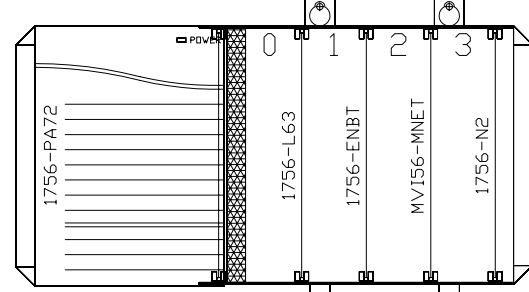
RTU/GAS FLOW METER  
1758-FL0302



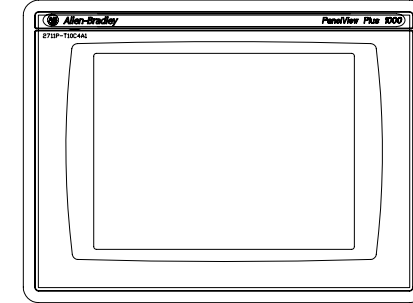
2711P-CBL-EX04

MASTER STATION

1756 CONTROL LOGIX



PANELVIEW PLUS 1000  
2711P-T10C4A1



ETHERNET SWITCH

RJ45 CABLES

RADIO 2



XXXX XXXXXXXX XX XXX XXXXXXXXXXXX  
XX XXXXXXXXXXXX XXXXXXXXXXXX  
XX XXX XXXXXXXXXXXX XXXXXXXXXXXX  
XXXXXXXX XX XXXXXXXXXXXX XXX XXX  
XXXXXXXX XXXXXXX XX XXXXXXXXXXXX

XXXXXX\_XXXX  
XXXXXX

DATASITE RTU  
CONTROL LOGIX MASTER  
COMMUNICATION DIAGRAM

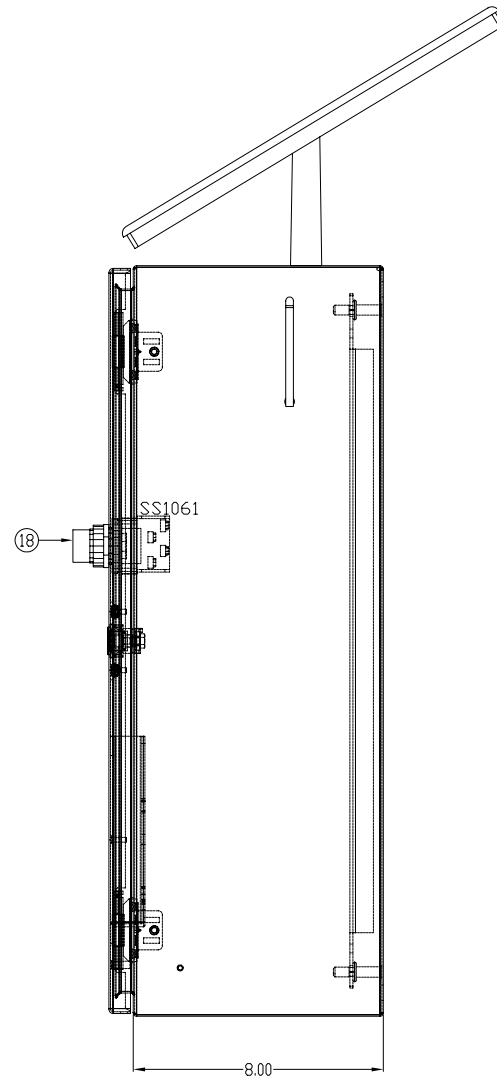
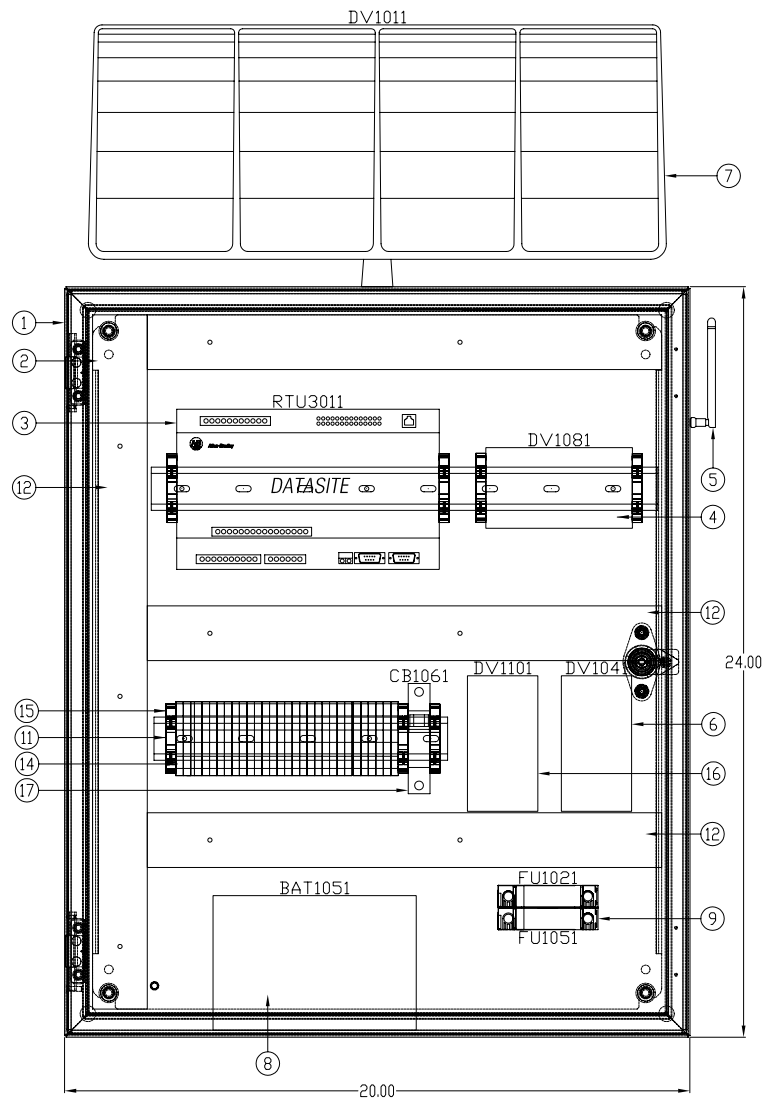
DWG NO	DATE	DWG REV
EXAMPLE	02-11-09	XX
SHEET	OF	DATE
5	XX	02/11/09

D

C

B

A



ITEM	QTY	DESCRIPTION	MFG	CATALOG
		CONTROL LOGIX DATASITE RTU PANEL		
1	1	NEMA1 ENCLOSURE 24"x20"x8"	HOFFMAN	CSD242008
2	1	PANEL FOR ENCLOSURE	HOFFMAN	CP2420
3	1	DATASITE ELECTRONIC FLOWMETER, 4-20ma I/O	AB	1758-FLO302
4	1	PROSOFT TECHNOLOGY FREQUENCY HOPPING ETHERNET - 2.4GHz	PROSOFT	RLX-FHE
5	1	RADIO ANTENNA		
6	1	SOLAR CHARGE CONTROLLER		
7	1	SOLAR PANEL		
8	1	12 VOLT BATTERY		
9	1	FUSE HOLDER 2 POLE, 30A, LED BLOWN FUSE INDICATOR	AB	1492-FB2C30-L
10	2	FUSE, 5 AMP, TIME DELAY, REJECTION TYPE	BUSSMAN	FNQ-R-5
11	-	35mm DIN RAIL	AB	199-DR1
12	-	PANDUIT WIRE DUCT, 1.5" x 3" WHITE	PANDUIT	F1.5X3WH6
13	-	PANDUIT WIRE DUCT COVER, 1.5" WHITE	PANDUIT	C1.5WH6
14	-	TERMINAL BLOCK	AB	1492-J4
15	-	END ANCHOR	AB	1492-EAJ35
16	1	12V TO 24V DC CONVERTER		
17	1	CIRCUIT BREAKER, 5 AMP	AB	1489-A1C050
18	1	SELECTOR SWITCH, 2 POSITIONED, MAINTAINED	AB	800H-HR2D1P
19	1	OFF-ON LEGEND PLATE	AB	800H-W133
		INSTRUMENTAION DEVICES		
20	1	DIFFERENTIAL PRESSURE SWITCH		
21	1	STATIC PRESSURE SWITCH		
22	1	TEMPERATURE SWITCH		
23	1	PULSE INPUT (TURBINE METERING)		
24	1	HART DEVICE 1		
25	1	HART DEVICE 2		
26	1	HART DEVICE 3		
27	1	HART DEVICE 4		
28	1	HART DEVICE 5		

D

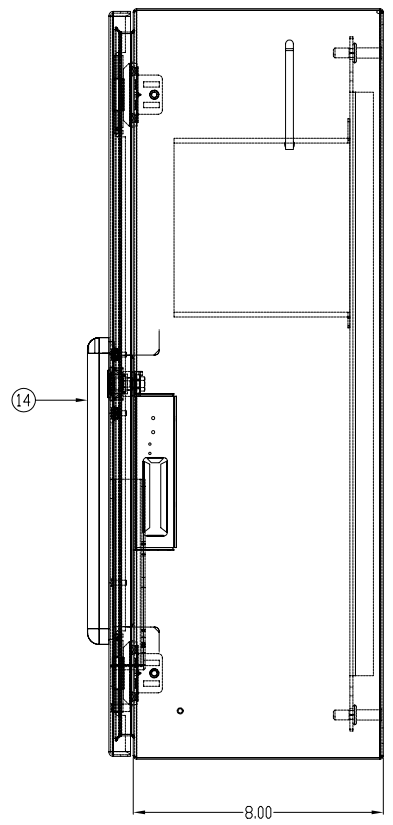
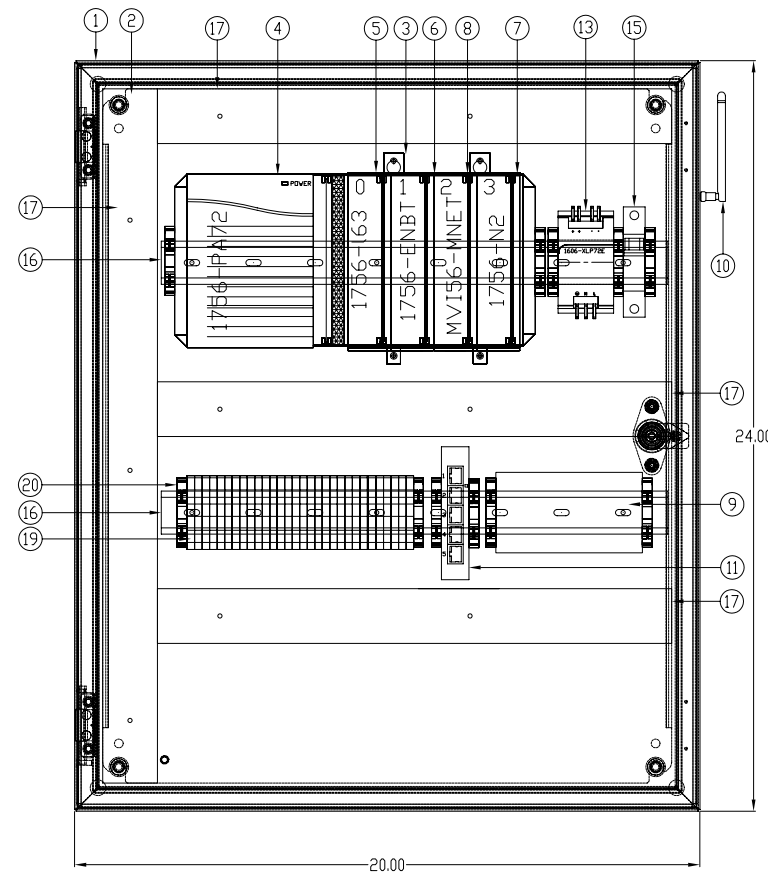
C

B

A

XXXX XXXXXXXX XX XXX XXXXXXXXXXXX XX XXXXXXXXXXXX XXXXXXXXXXXXXXXX XX XXX XXXXXXXXXXXXXXXX XXXXXXXXXXXX XXXXXX XX XXXXXXXXXXXXXXXX XXX XXX XXXXXXX XXXXXXX XX XXXXXXXXXXXX	XXXXXX_XXXX XXXXXX	DATASITE RTU CONTROL LOGIX MASTER RTU PANEL LAYOUT		DWG XX DATE 02-11-09	DWG REV XX
		SHEET 6 OF XX	(CAD)		

ITEM	QTY	DESCRIPTION	MFG	CATALOG
		CONTROL LOGIX MASTER PANEL		
1	1	NEMA1 ENCLOSURE 24"x20"x8"	HOFFMAN	CSD242008
2	1	PANEL FOR ENCLOSURE	HOFFMAN	CP2420
3	1	4 SLOT CONTROL LOGIX CHASSIS	AB	1756-A4
4	1	POWER SUPPLY, 85-265VAC (5V @ 10 AMP)	AB	1756-PA72
5	1	CONTROL LOGIX PROCESSOR	AB	1756-L63
6	1	CLX ETHERNET/IP 10/100 BRIDGE MODULE	AB	1756-ENBT
7	1	SLOT FILLER	AB	1756-N2
8	1	PROSOFT TECHNOLOGY MODBUS TCP/IP COMMUNICATION MODULE	PROSOFT	MV156-MNET
9	1	PROSOFT TECHNOLOGY FREQUENCY HOPPING ETHERNET - 2.4GHz	PROSOFT	RLX-FHE
10	1	RADIO ANTENNA		
11	1	5 PORT ETHERNET SWITCH	AB	1783-US05T
12	5	ETHERNET CABLE, STRAIGHT THROUGH RJ45	AB	RJ45
13	1	COMPACT POWER SUPPLY, 24-28V, 72w, 120/240VAC INPUT	AB	1606-XLP72E
14	1	PANELVIEW PLUS 1000	AB	2711P-T10C4A1
15	1	CIRCUIT BREAKER, 15 AMP	AB	1489-A1C150
16	-	35mm DIN RAIL	AB	199-DR1
17	-	PANDUIT WIRE DUCT, 1.5" x3" WHITE	PANDUIT	F1.5X3WH6
18	-	PANDUIT WIRE DUCT COVER, 1.5" WHITE	PANDUIT	C1.5WH6
19	-	TERMINAL BLOCK	AB	1492-J4
20	-	END ANCHOR	AB	1492-EAJ35



XXXX XXXXXXXX XX XXX XXXXXXXXXXXX XX XXXXXXXXXXXXXXXXXXXXXXXXXXXX XX XXXXXXXXXXXXXXXXXXXXXXXXXXXX XXXXXX XX XXXXXXXXXXXXXXXXXXXX XXXXXXX XXXXXXX XX XXXXXXXXXXXX	<b>XXXXXX_XXXX</b>  <b>XXXXXX</b>	DATASITE RTU CONTROL LOGIX MASTER LOGIX PANEL LAYOUT		DWG XX	DATE 02-11-09
		DWT	SHEET 7	OF XX	DWG REV XX