

THIS SPACE INTENTIONALLY LEFT BLANK

XXXX XXXXXXXX XX XXX XXXXXXXXXXXX XX XXXXXXXXXXXX XXXXXXXXXXXX XX XXX XXXXXXXXXXXX XXXXXXXXXXXX XXXXXXXX XX XXXXXXXXXXXX XXX XXX XXXXXXXX XXXXXX XX XXXXXXXXXXXX	<b>XXXXXX_XXXX</b> <b>XXXXXX</b>	DATASITE RTU FACTORY TALK SE MASTER POWER DISTRIBUTION	DWG XX DATE 02-11-09 EXAMPLE DWT 1 OF XX	DWG REV XX CRA
--	-------------------------------------	--	---	-------------------

8

7

6

5

4

3

2

1

200

201

202

203

204

205

206

207

208

209

210

211

212

213

214

215

216

217

218

219

220

221

222

223

224

225

226

227

228

229

230

231

232

233

234

235

THIS SPACE INTENTIONALLY LEFT BLANK

THIS SPACE INTENTIONALLY LEFT BLANK

D

D

C

C

B

B

A

A

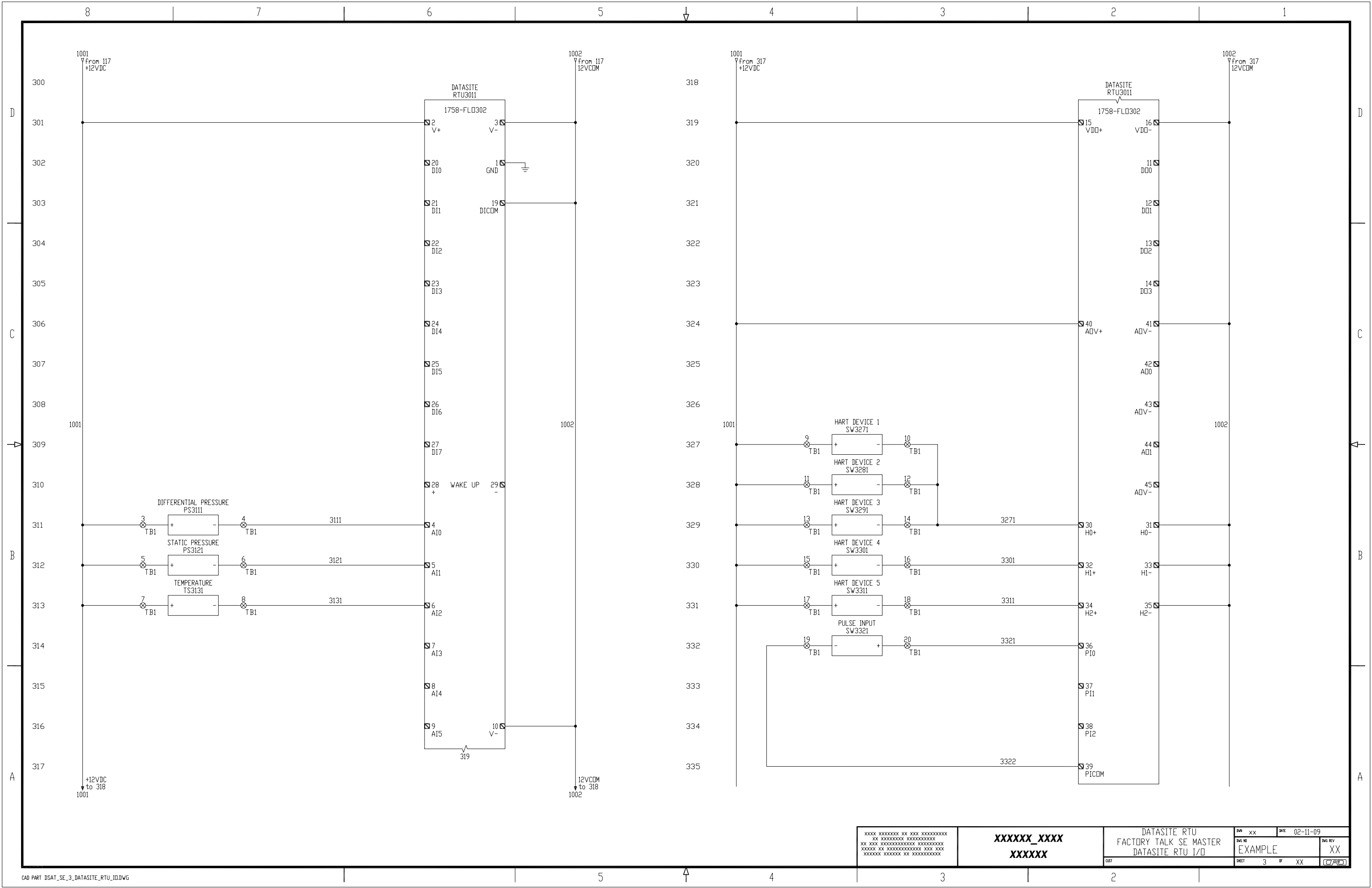
XXXX XXXXXXXX XX XXX XXXXXXXXXXXX XX XXXXXXXXXXXX XXXXXXXXXXXX XX XXXXXXXXXXXX XXXXXXXXXXXX XXXXXX XX XXXXXXXXXXXX XXX XXX XXXXXX XXXXXX XX XXXXXXXXXXXX	<b>XXXXXX_XXXX</b> <b>XXXXXX</b>	DATASITE RTU FACTORY TALK SE MASTER CONTROL SPARE		DWG XX	DATE 02-11-09
		DWG NO EXAMPLE	DWG REV XX	SHEET 2 OF XX	

5

4

3

2



XXXX XXXXXXXX XX XXX XXXXXXXXXXXX  
 XX XXXXXXXXXXXXXXXXXXXXXXXXXXXXXXXX  
 XXXXX XX XXXXXXXXXXXXXXXXXXXXXXXX  
 XXXXXXX XXXXXXXX XX XXXXXXXXXXXXXXX

XXXXXX\_XXXX  
 XXXXXX

DATASITE RTU  
 FACTORY TALK SE MASTER  
 DATASITE RTU I/O

DWG NO	DATE	DWG REV
EXAMPLE	02-11-09	XX
SHEET	OF	
3	XX	

8

7

6

5

4

3

2

1

D

C

B

A

D

C

B

A

400

401

402

403

404

405

406

407

408

409

410

411

412

413

414

415

416

417

418

419

420

421

422

423

424

425

426

427

428

429

430

431

432

433

434

435

THIS SPACE INTENTIONALLY LEFT BLANK

THIS SPACE INTENTIONALLY LEFT BLANK

XXXX XXXXXXXX XX XXX XXXXXXXXXXXX  
XX XXXXXXXXXXXX XXXXXXXXXXXX  
XX XXX XXXXXXXXXXXX XXXXXXXXXXXX  
XXXXXXXX XX XXXXXXXXXXXX XXX XXX  
XXXXXXXX XXXXXXXX XX XXXXXXXXXXXX

XXXXXX\_XXXX  
XXXXXX

DATASITE RTU  
FACTORY TALK SE MASTER  
I/O SPARE

DWG XX DATE 02-11-09

DWG REV EXAMPLE XX

SHEET 4 OF XX

5

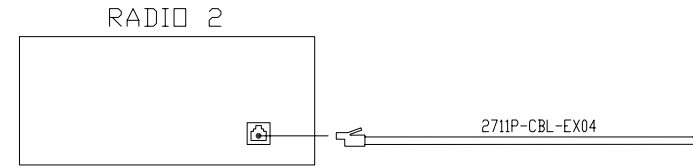
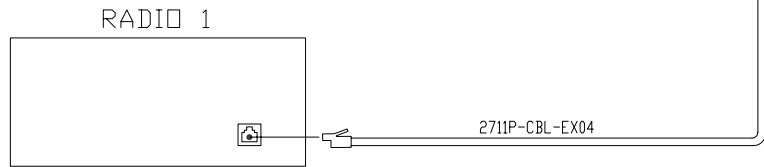
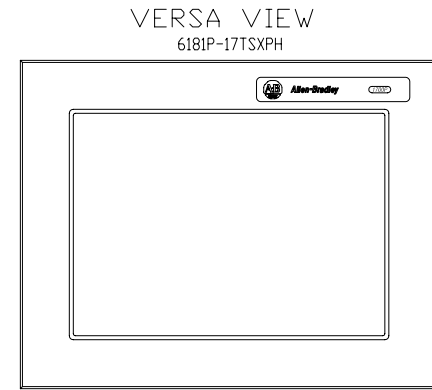
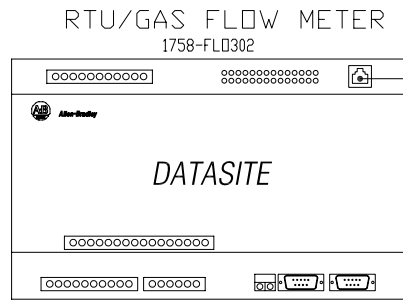
4

3

2

REMOTE STATION

MASTER STATION



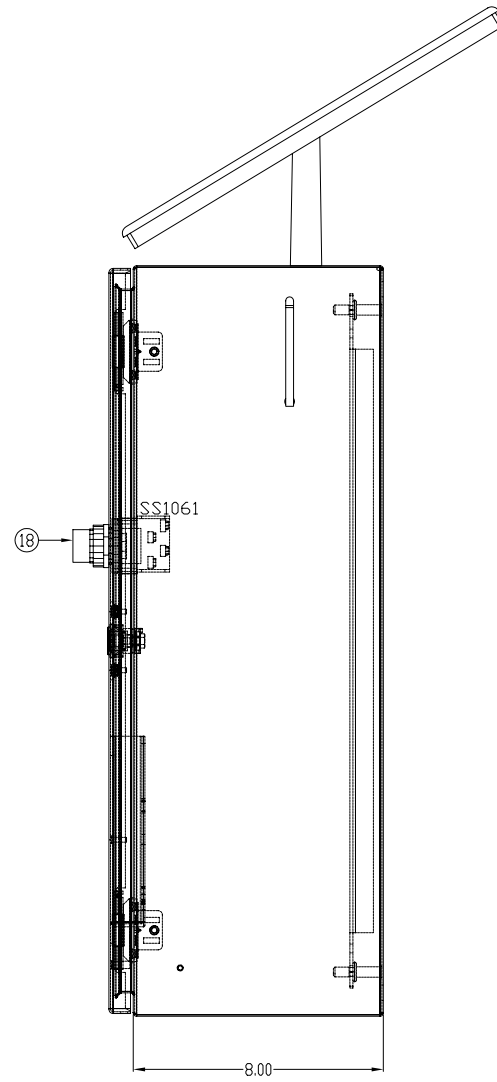
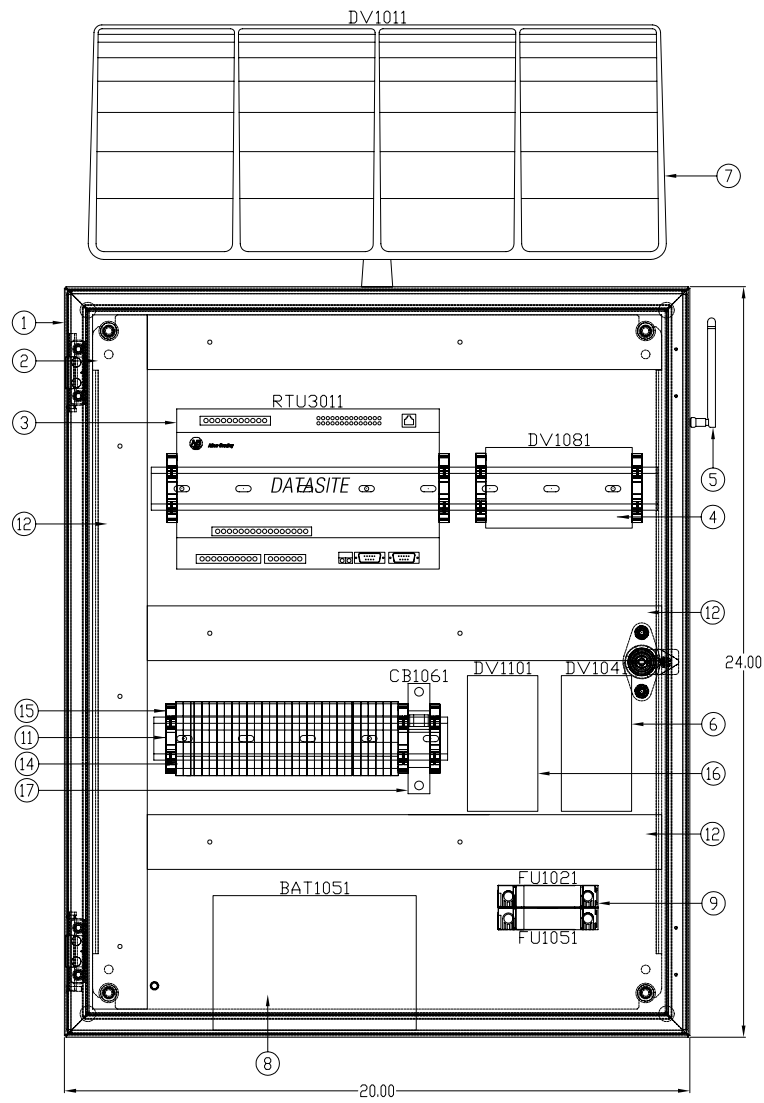
XXXX XXXXXXXX XX XXX XXXXXXXXXXXX XX XXXXXXXXXXXX XXXXXXXXXXXX XX XXX XXXXXXXXXXXXXXXXXXXX XXXXXX XX XXXXXXXXXXXXXXXXXXXX XXXXXXX XXXXXXX XX XXXXXXXXXXXX	XXXXXX_XXXX XXXXXX	DATASITE RTU FACTORY TALK SE MASTER COMMUNICATION DIAGRAM	DWG XX DATE 02-11-09	DWG REV XX
		SHEET 5 OF XX	SHEET 5 OF XX	(CAD)

D

C

B

A



ITEM	QTY	DESCRIPTION	MFG	CATALOG
		FACTORY TALK VIEW SE DATASITE PANEL		
1	1	NEMA1 ENCLOSURE 24"x20"x8"	HOFFMAN	CSD242008
2	1	PANEL FOR ENCLOSURE	HOFFMAN	CP2420
3	1	DATASITE ELECTRONIC FLOWMETER, 4-20ma I/O	AB	1758-FLO302
4	1	PROSOFT TECHNOLOGY FREQUENCY HOPPING ETHERNET - 2.4GHz	PROSOFT	RLX-FHE
5	1	RADIO ANTENNA		
6	1	SOLAR CHARGE CONTROLLER		
7	1	SOLAR PANEL		
8	1	12 VOLT BATTERY		
9	1	FUSE HOLDER 2 POLE, 30A, LED BLOWN FUSE INDICATOR	AB	1492-FB2C30-L
10	2	FUSE, 5 AMP, TIME DELAY, REJECTION TYPE	BUSSMAN	FNQ-R-5
11	1	35mm DIN RAIL	AB	199-DR1
12	1	PANDUIT WIRE DUCT, 1.5" x 3" WHITE	PANDUIT	F1.5X3WH6
13	1	PANDUIT WIRE DUCT COVER, 1.5" WHITE	PANDUIT	C1.5WH6
14	-	TERMINAL BLOCK	AB	1492-J4
15	-	END ANCHOR	AB	1492-EAJ35
16	1	12V TO 24V DC CONVERTER		
17	1	CIRCUIT BREAKER, 5 AMP	AB	1489-A1C050
18	1	SELECTOR SWITCH, 2 POSITION, MAINTAINED	AB	800H-HR2D1P
19	1	OFF-ON LEGEND PLATE	AB	800H-W133
		INSTRUMENTATION DEVICES		
20	1	DIFFERENTIAL PRESSURE SWITCH		
21	1	STATIC PRESSURE SWITCH		
22	1	TEMPERATURE SWITCH		
23	1	PULSE INPUT (TURBINE METERING)		
24	1	HART DEVICE 1		
25	1	HART DEVICE 2		
26	1	HART DEVICE 3		
27	1	HART DEVICE 4		
28	1	HART DEVICE 5		

D

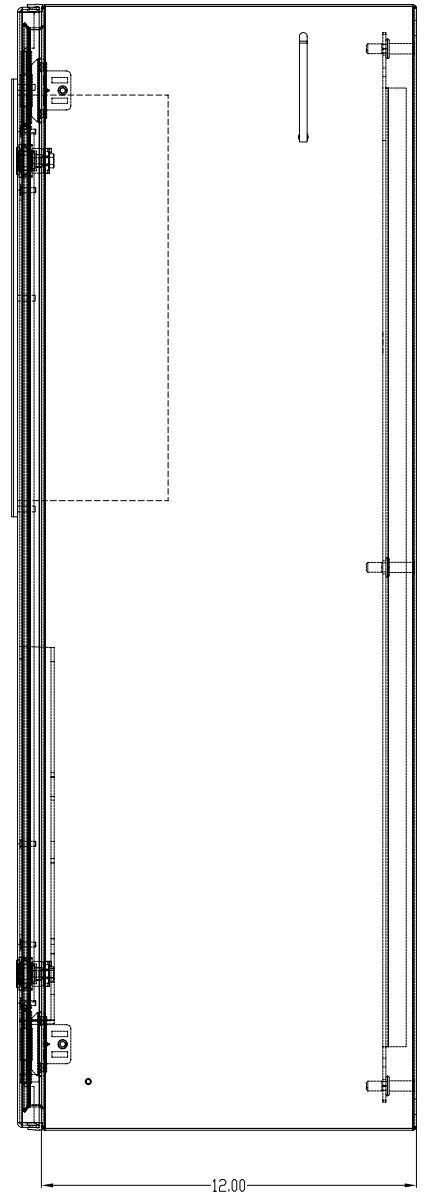
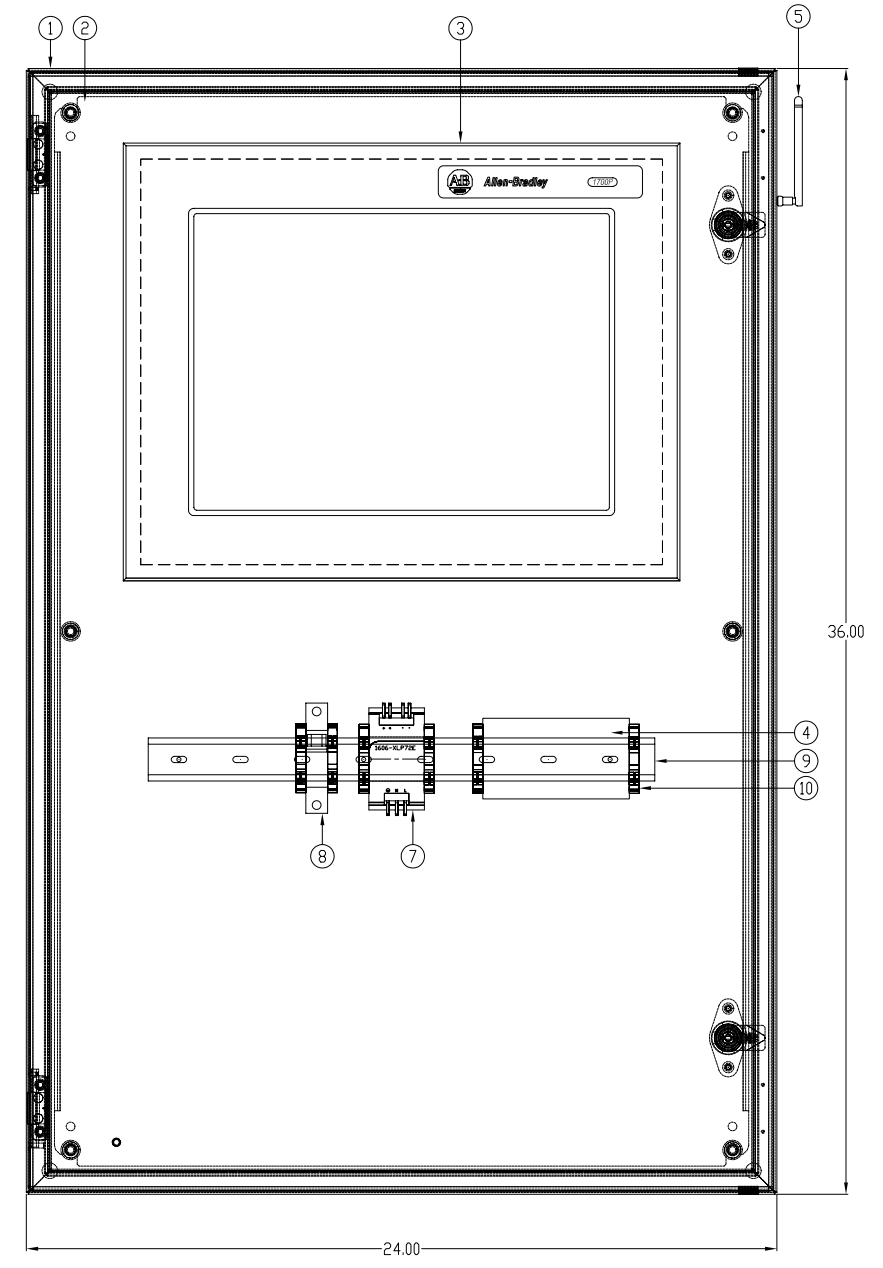
C

B

A

XXXX XXXXXXXX XX XXX XXXXXXXXXXXX XX XXXXXXXXXXXX XXXXXXXXXXXX XX XXX XXXXXXXXXXXX XXXXXXXXXXXX XXXXXX XX XXXXXXXXXXXX XXX XXX XXXXXXX XXXXXXX XX XXXXXXXXXXXX	XXXXXX_XXXX XXXXXX	DATASITE RTU FACTORY TALK SE MASTER RTU PANEL LAYOUT		DWG XX DATE 02-11-09	DWG REV XX
		SHEET 6 OF XX	(C)		

ITEM	QTY	DESCRIPTION	MFG	CATALOG
		FACTORY TALK VIEW SE MASTER STATION		
1	1	NEMA1 ENCLOSURE 36"x24"x12"	HOFFMAN	CSD362412
1	1	PANEL FOR ENCLOSURE	HOFFMAN	CP3624
3	1	VERSAVIEW INTEGRATED DISPLAY INDUSTRIAL COMPUTER	AB	6181P-17TSXPH
4	1	PROSOFT TECHNOLOGY FREQUENCY HOPPING ETHERNET - 2.4GHz	PROSOFT	RLX-FHE
5	1	RADIO ANTENNA		
6	1	ETHERNET CAT5 CROSSOVER CABLE	AB	2711P-CBL-EX04
7	1	COMPACT POWER SUPPLY, 24-28V, 72W, 120/240VAC INPUT	AB	1606-XLP72E
8	1	CIRCUIT BREAKER, 10 AMP	AB	1489-A1C100
9	-	35mm DIN RAIL	AB	199-DR1
10	-	END ANCHOR	AB	1492-EAJ35



XXXX XXXXXXXX XX XXX XXXXXXXXXXXX  
 XX XXXXXXXXXXXX XXXXXXXXXXXXXXXX  
 XX XXXXXXXXXXXXXXXXXXXXXXXXXXXXXXXX  
 XXXXXX XX XXXXXXXXXXXXXXXXXXXXXXXX  
 XXXXXXX XXXXXXXX XX XXXXXXXXXXXXXXXX

XXXXXX\_XXXX  
 XXXXXXX

DATASITE RTU  
 FACTORY TALK SE MASTER  
 MASTER PANEL LAYOUT

DWG NO	DATE	DWG REV
EXAMPLE	02-11-09	XX
SHEET	OF	
7	XX	