

- NOTES:
1. ALL WIRES TO BE xxxV, xx\*, xxx.
  2. OBSERVE DIRTY/CLEAN WIRING PRACTICES.
  3. Dx/Cx MARKERS INDICATE WIRE WAY ROUTING FOR THE SELECTED WIRES (Dx = DIRTY, Cx = CLEAN)
  4. ALL WIRES ARE #xx AWG, UNLESS OTHERWISE NOTED.
  5. ALL WIRES ARE xxx, UNLESS OTHERWISE NOTED.
  6. ALL GROUND WIRES ARE #xx AWG xxxxxxx, UNLESS OTHERWISE NOTED.

XXXX XXXXXXXX XX XXX XXXXXXXXXXXX XX XXXXXXXXXXXX XXXXXXXXXXXX XX XXX XXXXXXXXXXXX XXXXXXXXXXXX XXXXXX XXXXXXXXXXXX XXX XXX XXXXXX XXXXXXXX XX XXXXXXXXXXXX	<b>XXXXXX_XXXX</b> <b>XXXXXX</b>	CONNECTED COMPONENTS MACHINE SAFETY ESTOPS w/GATE SW POWER DISTRIBUTION		DWG: XX DATE: 08-18-09
		SHEET: 01 OF 14	DWG REV: A	

8

7

6

5

4

3

2

1

D

D

C

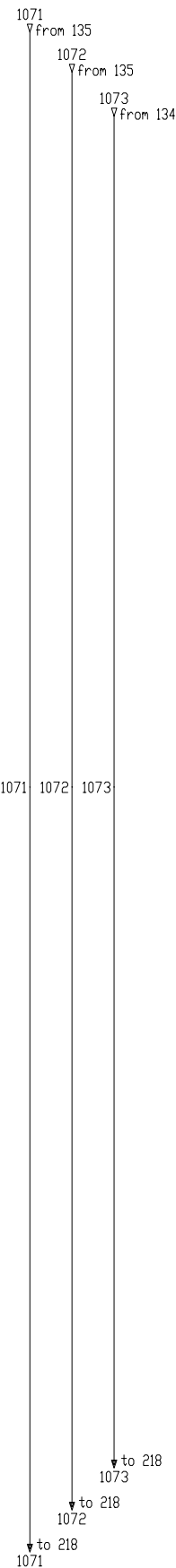
C

B

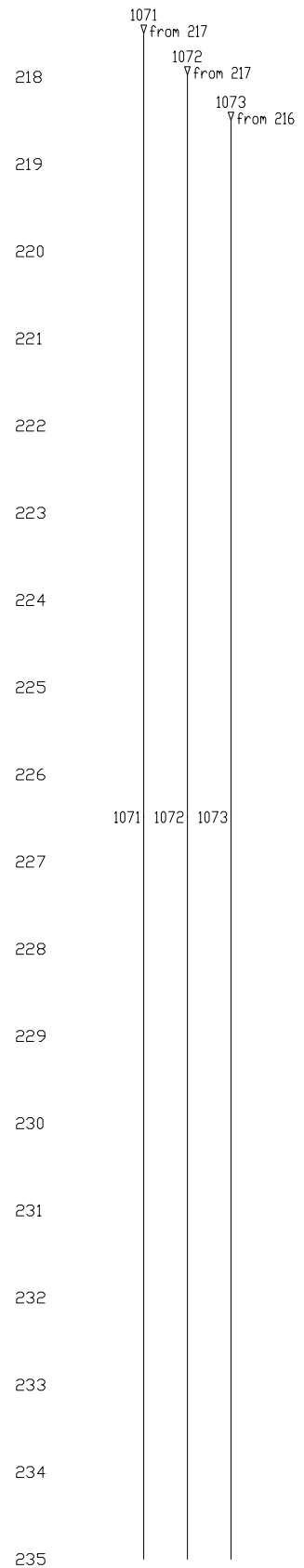
B

A

A

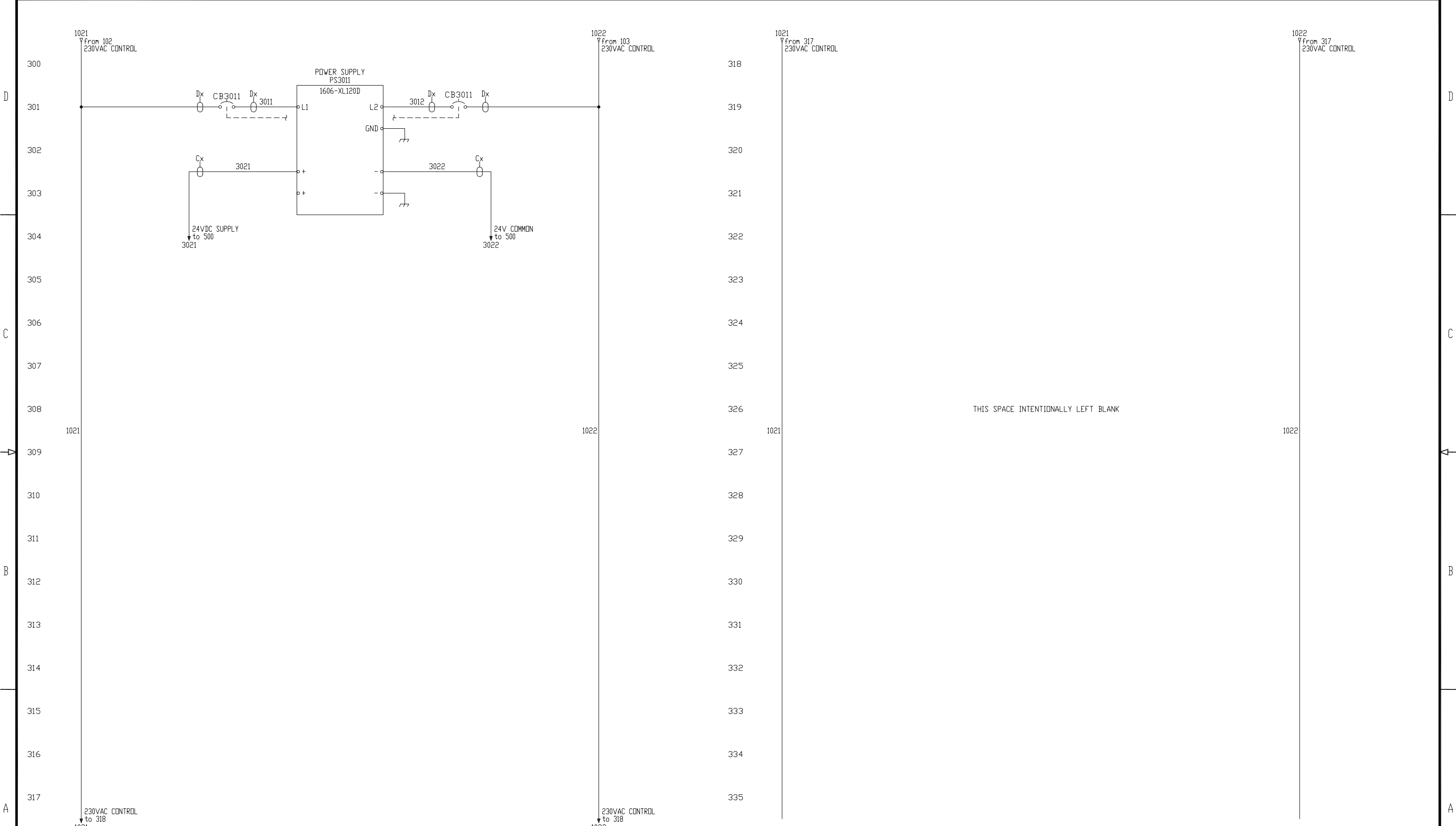


THIS SPACE INTENTIONALLY LEFT BLANK



THIS SPACE INTENTIONALLY LEFT BLANK

XXXX XXXXXXXX XX XXX XXXXXXXXXXXX XX XXXXXXXXXXXX XXXXXXXXXXXX XX XXX XXXXXXXXXXXX XXXXXXXXXXXX XXXXXX XX XXXXXXXXXXXX XXX XXX XXXXXXX XXXXXXX XX XXXXXXXXXXXX	<b>XXXXXX_XXXX</b> <b>XXXXXX</b>	CONNECTED COMPONENTS MACHINE SAFETY ESTOPS w/GATE SW POWER DISTRIBUTION	DWG XX DATE 08-18-09	DWG REV EXAMPLE A
		SHEET 02 OF 14	(PAC)	



THIS SPACE INTENTIONALLY LEFT BLANK

- NOTES:
1. ALL WIRES TO BE xxxV, xx\*, xxx.
  2. OBSERVE DIRTY/CLEAN WIRING PRACTICES.
  3. Dx/Cx MARKERS INDICATE WIRE WAY ROUTING FOR THE SELECTED WIRES (Dx = DIRTY, Cx = CLEAN)
  4. ALL WIRES ARE #xx AWG, UNLESS OTHERWISE NOTED.
  5. ALL WIRES ARE xxx, UNLESS OTHERWISE NOTED.
  6. ALL GROUND WIRES ARE #xx AWG xxxxxx, UNLESS OTHERWISE NOTED.

XXXX XXXXXXXX XX XXX XXXXXXXXXXXX XX XXXXXXXXXXXX XXXXXXXXXXXX XX XXX XXXXXXXXXXXX XXXXXXXXXXXX XXXXXX XX XXXXXXXXXXXX XXX XXX XXXXXXX XXXXXXX XX XXXXXXXXXXXX	<b>XXXXXX_XXXX</b> <b>XXXXXX</b>	CONNECTED COMPONENTS MACHINE SAFETY ESTOPS w/GATE SW 230VAC CONTROL		DWG: XX DATE: 08-18-09
		DWT: 03 OF: 14	Dwg ID: EXAMPLE Dwg REV: A	(Signature)

D

C

B

A

D

C

B

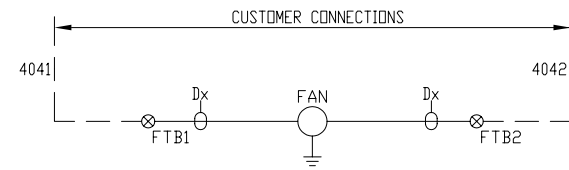
A

1053  
from 106  
120VAC CONTROL

1054  
from 105  
NEUTRAL

1053  
from 417  
120VAC CONTROL

1054  
from 417  
NEUTRAL



418  
419  
420  
421  
422  
423  
424  
425  
426  
427  
428  
429  
430  
431  
432  
433  
434  
435

THIS SPACE INTENTIONALLY LEFT BLANK

1053

1054

1053

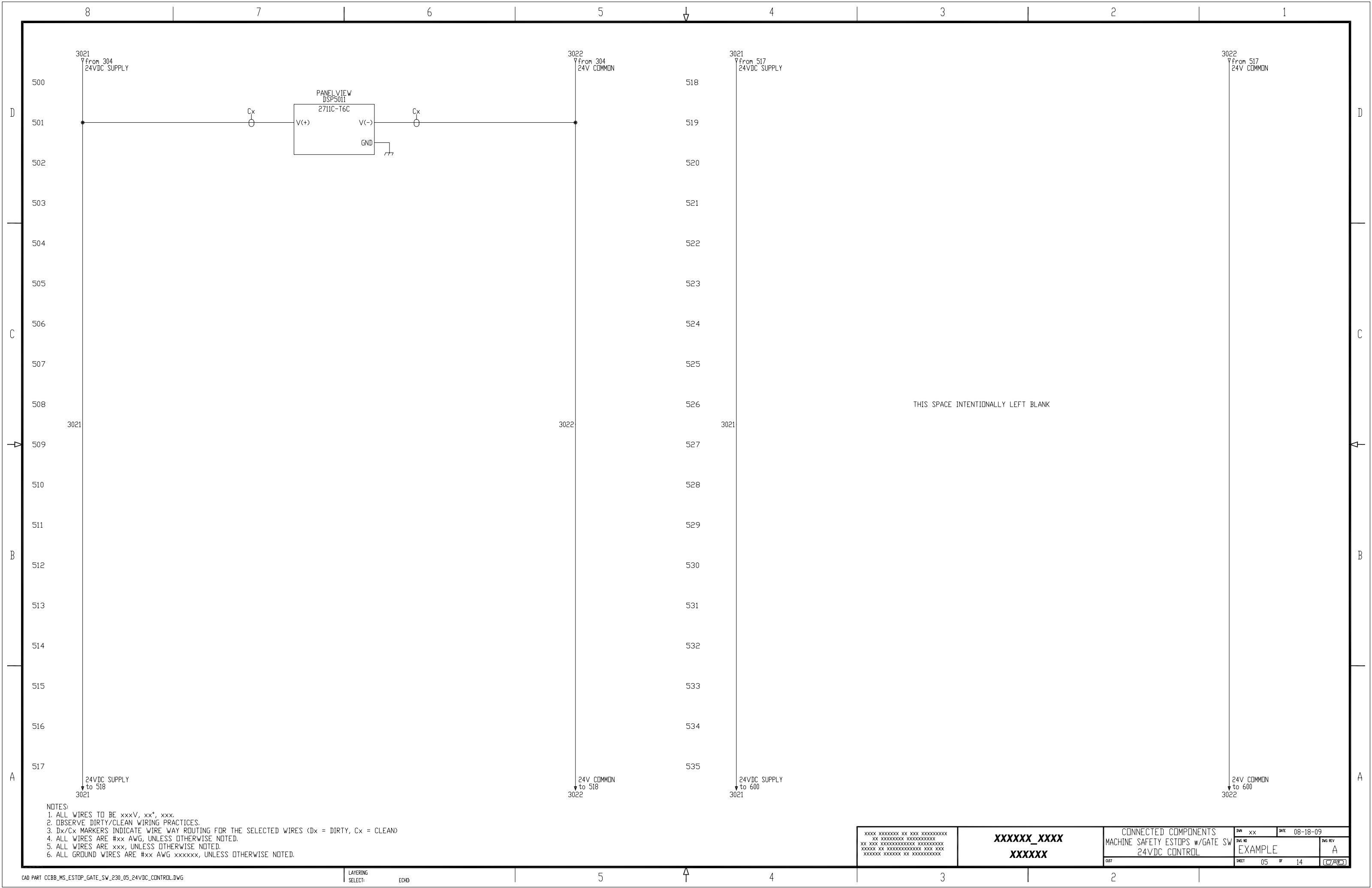
1054

120VAC CONTROL  
to 418  
1053

NEUTRAL  
to 418  
1054

- NOTES:
1. ALL WIRES TO BE xxxV, xx\*, xxx.
  2. OBSERVE DIRTY/CLEAN WIRING PRACTICES.
  3. Dx/Cx MARKERS INDICATE WIRE WAY ROUTING FOR THE SELECTED WIRES (Dx = DIRTY, Cx = CLEAN)
  4. ALL WIRES ARE #xx AWG, UNLESS OTHERWISE NOTED.
  5. ALL WIRES ARE xxx, UNLESS OTHERWISE NOTED.
  6. ALL GROUND WIRES ARE #xx AWG xxxxxx, UNLESS OTHERWISE NOTED.

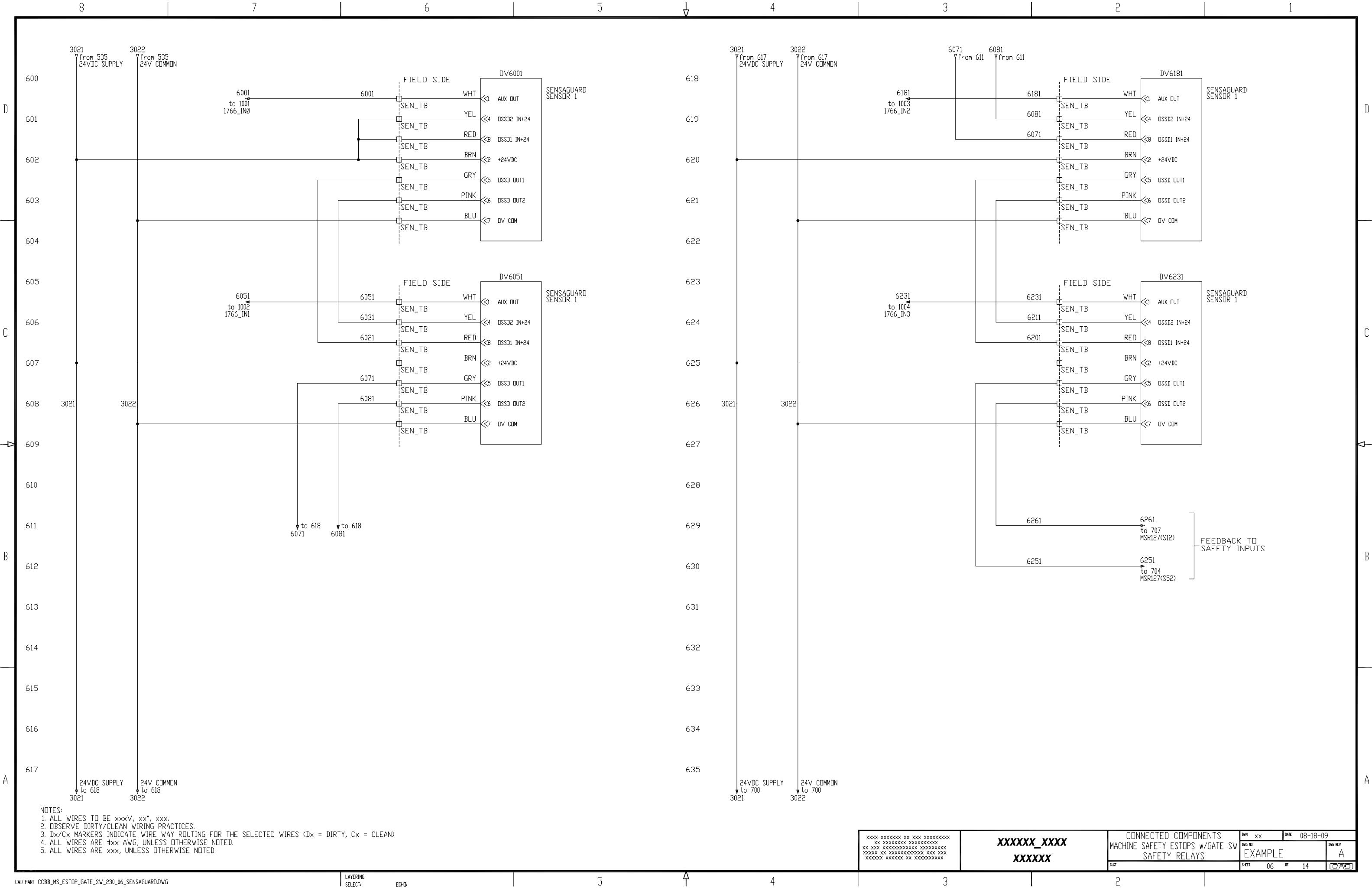
XXXX XXXXXXXX XX XXX XXXXXXXXXXXX XX XXXXXXXXXXXX XXXXXXXXXXXX XX XXX XXXXXXXXXXXX XXXXXXXXXXXX XXXXXX XX XXXXXXXXXXXX XXX XXX XXXXXX XXXXXXXX XX XXXXXXXXXXXX	XXXXXX_XXXX XXXXXX	CONNECTED COMPONENTS MACHINE SAFETY ESTOPS w/GATE SW 120VAC CONTROL	DWG NO EXAMPLE	DWG REV A
		DATE 08-18-09	SHEET 04 OF 14	(C/R)



THIS SPACE INTENTIONALLY LEFT BLANK

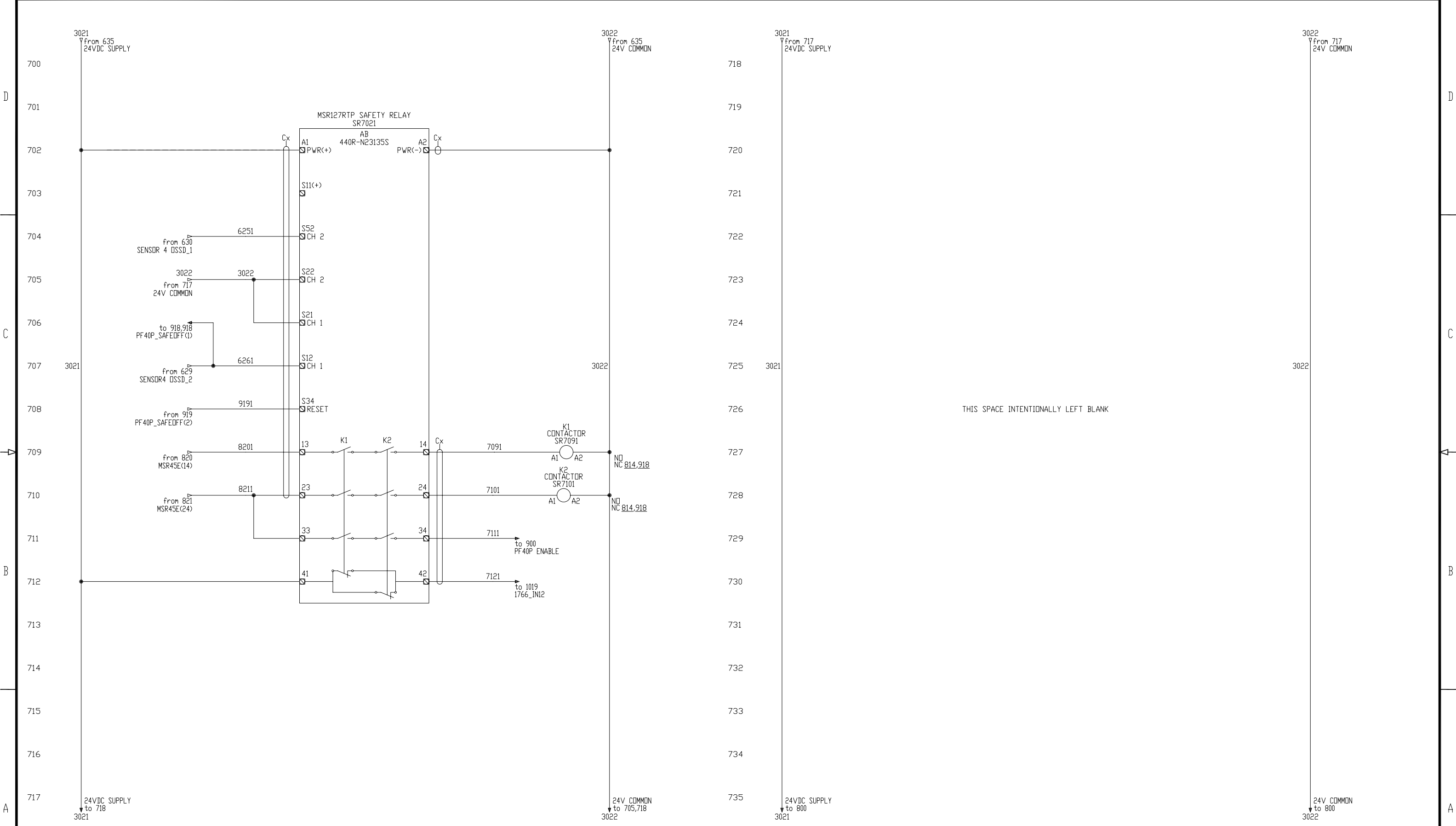
- NOTES:
1. ALL WIRES TO BE xxxV, xx\*, xxx.
  2. OBSERVE DIRTY/CLEAN WIRING PRACTICES.
  3. Dx/Cx MARKERS INDICATE WIRE WAY ROUTING FOR THE SELECTED WIRES (Dx = DIRTY, Cx = CLEAN)
  4. ALL WIRES ARE #xx AWG, UNLESS OTHERWISE NOTED.
  5. ALL WIRES ARE xxx, UNLESS OTHERWISE NOTED.
  6. ALL GROUND WIRES ARE #xx AWG xxxxxx, UNLESS OTHERWISE NOTED.

XXXXX_XXXX XXXXXX	CONNECTED COMPONENTS MACHINE SAFETY ESTOPS w/GATE SW 24VDC CONTROL	DWG NO EXAMPLE	DATE 08-18-09	DWG REV A
	DWT 05	OF 14		



NOTES:  
 1. ALL WIRES TO BE xxxV, xx\*, xxx.  
 2. OBSERVE DIRTY/CLEAN WIRING PRACTICES.  
 3. Dx/Cx MARKERS INDICATE WIRE WAY ROUTING FOR THE SELECTED WIRES (Dx = DIRTY, Cx = CLEAN)  
 4. ALL WIRES ARE #xx AWG, UNLESS OTHERWISE NOTED.  
 5. ALL WIRES ARE xxx, UNLESS OTHERWISE NOTED.

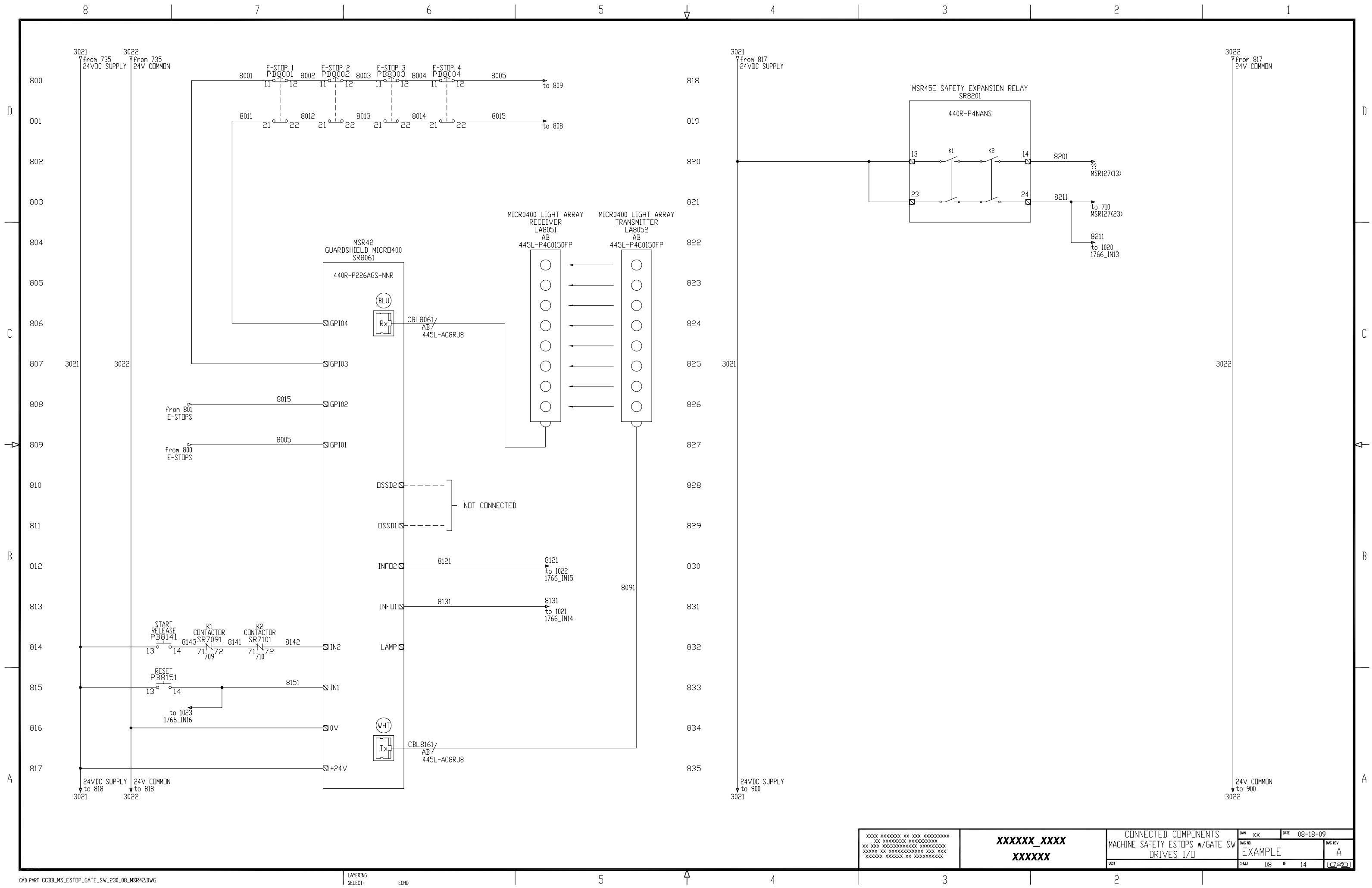
XXXXX_XXXX XXXXXX	CONNECTED COMPONENTS MACHINE SAFETY ESTOPS w/GATE SW SAFETY RELAYS	DWG NO EXAMPLE	DATE 08-18-09	DWG REV A
	SHEET 06	OF 14		



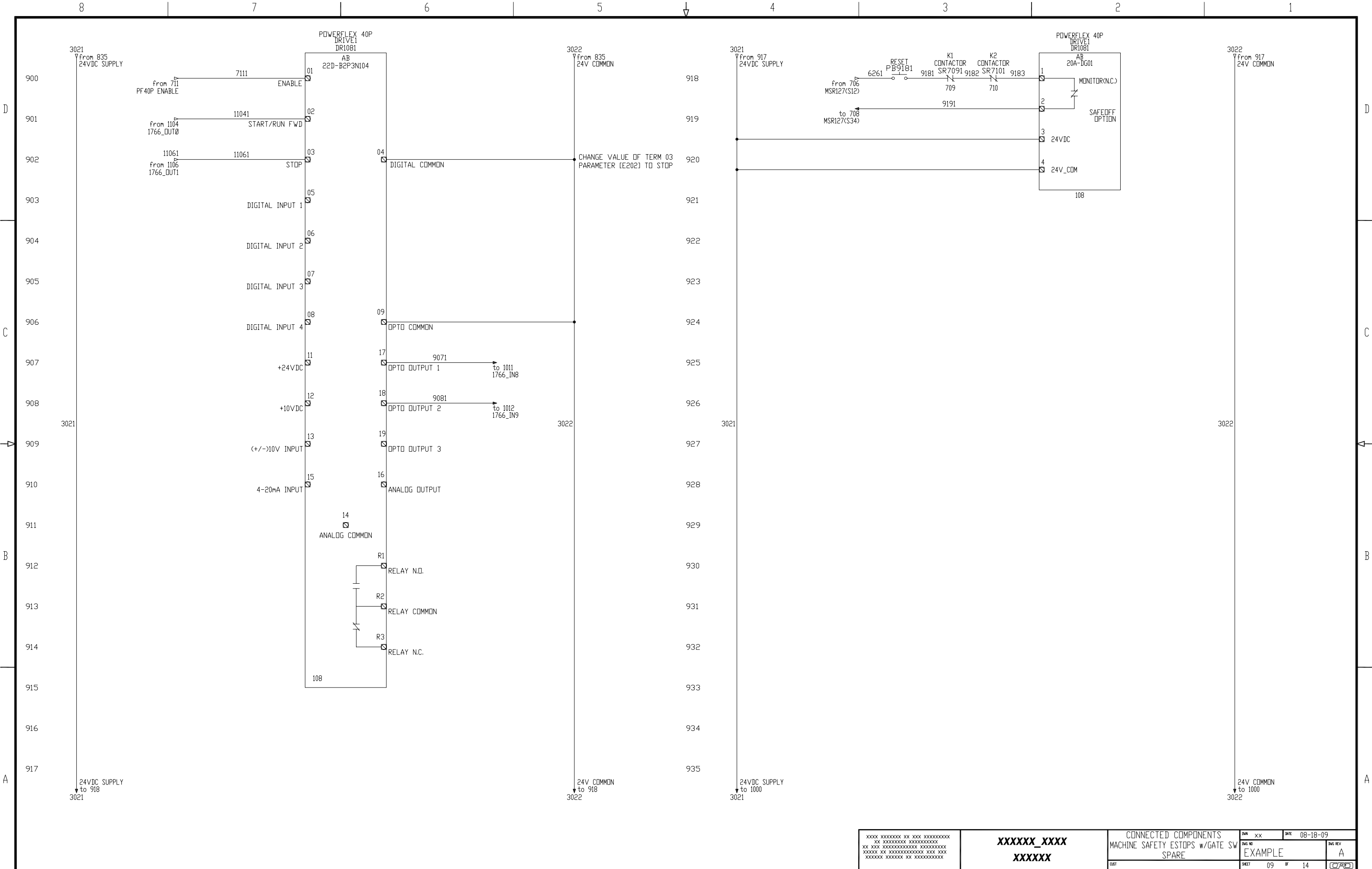
THIS SPACE INTENTIONALLY LEFT BLANK

- NOTES:
1. ALL WIRES TO BE xxxV, xx\*, xxx.
  2. OBSERVE DIRTY/CLEAN WIRING PRACTICES.
  3. Dx/Cx MARKERS INDICATE WIRE WAY ROUTING FOR THE SELECTED WIRES (Dx = DIRTY, Cx = CLEAN)
  4. ALL WIRES ARE #xx AWG, UNLESS OTHERWISE NOTED.
  5. ALL WIRES ARE xxx, UNLESS OTHERWISE NOTED.

XXXX XXXXXXXX XX XXX XXXXXXXXXXXX XX XXXXXXXXXXXX XXXXXXXXXXXX XX XXX XXXXXXXXXXXX XXXXXXXXXXXX XXXXXX XX XXXXXXXXXXXX XXX XXX XXXXXXX XXXXXXX XX XXXXXXXXXXXX	XXXXXX_XXXX XXXXXX	CONNECTED COMPONENTS MACHINE SAFETY ESTOPS w/GATE SW SAFETY RELAYS	DWG NO EXAMPLE	DWG REV A	DWT 07 OF 14	DATE 08-18-09
--	-----------------------	--	-------------------	--------------	--------------	---------------

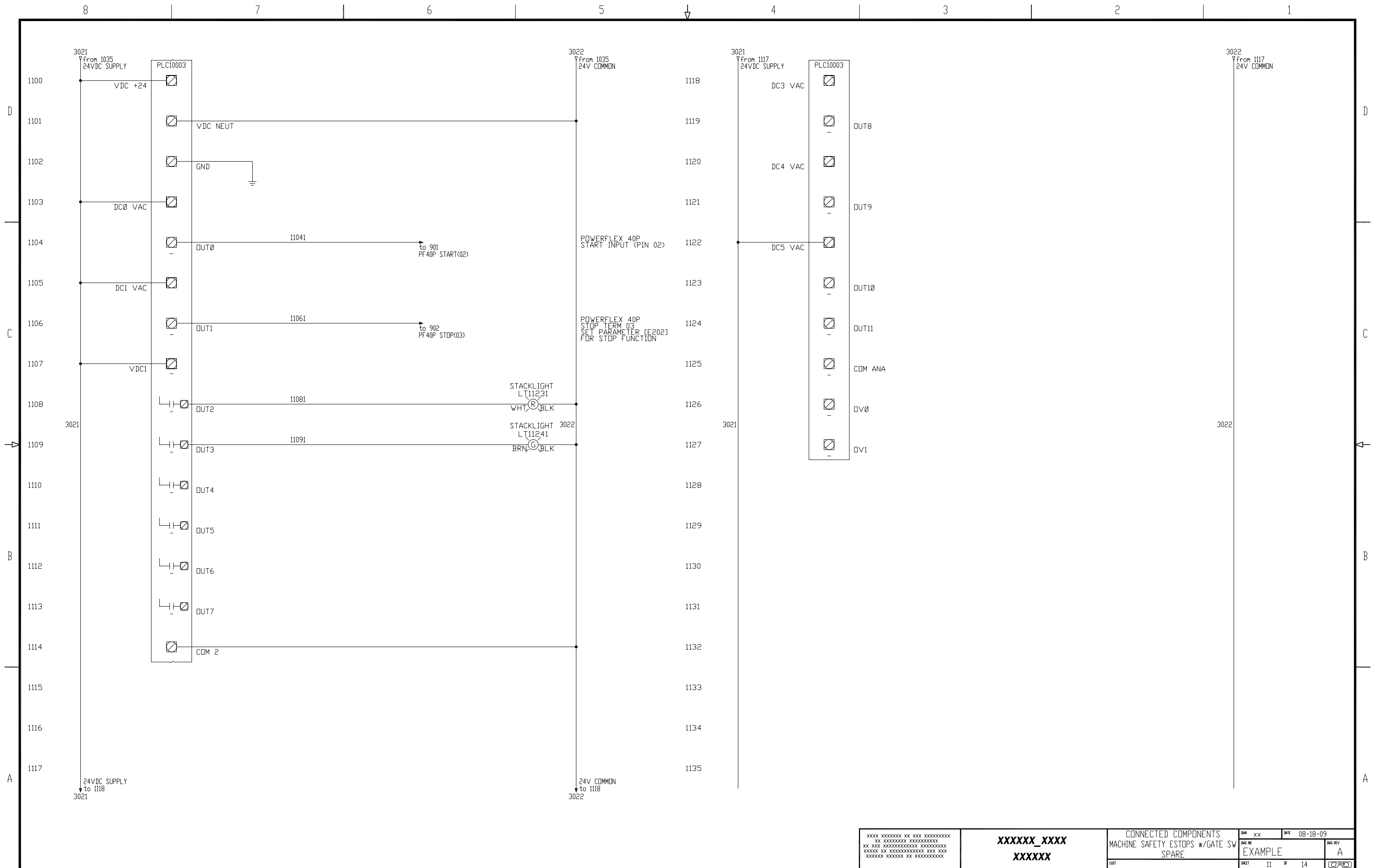


XXXX XXXXXX XX XXX XXXXXXXXXXXX XX XXXXXXXXXXXXXXXXXXXXXXXXXXXX XXXXX XX XXXXXXXXXXXXXXXXXXXX XXXXXX XXXXXX XX XXXXXXXXXXXX	<b>XXXXXX_XXXX</b> <b>XXXXXX</b>	CONNECTED COMPONENTS MACHINE SAFETY ESTOPS w/GATE SW DRIVES I/O		DWG NO <b>EXAMPLE</b>	DATE 08-18-09 DWG REV <b>A</b>
		DWT 08	DF 14	(C)	

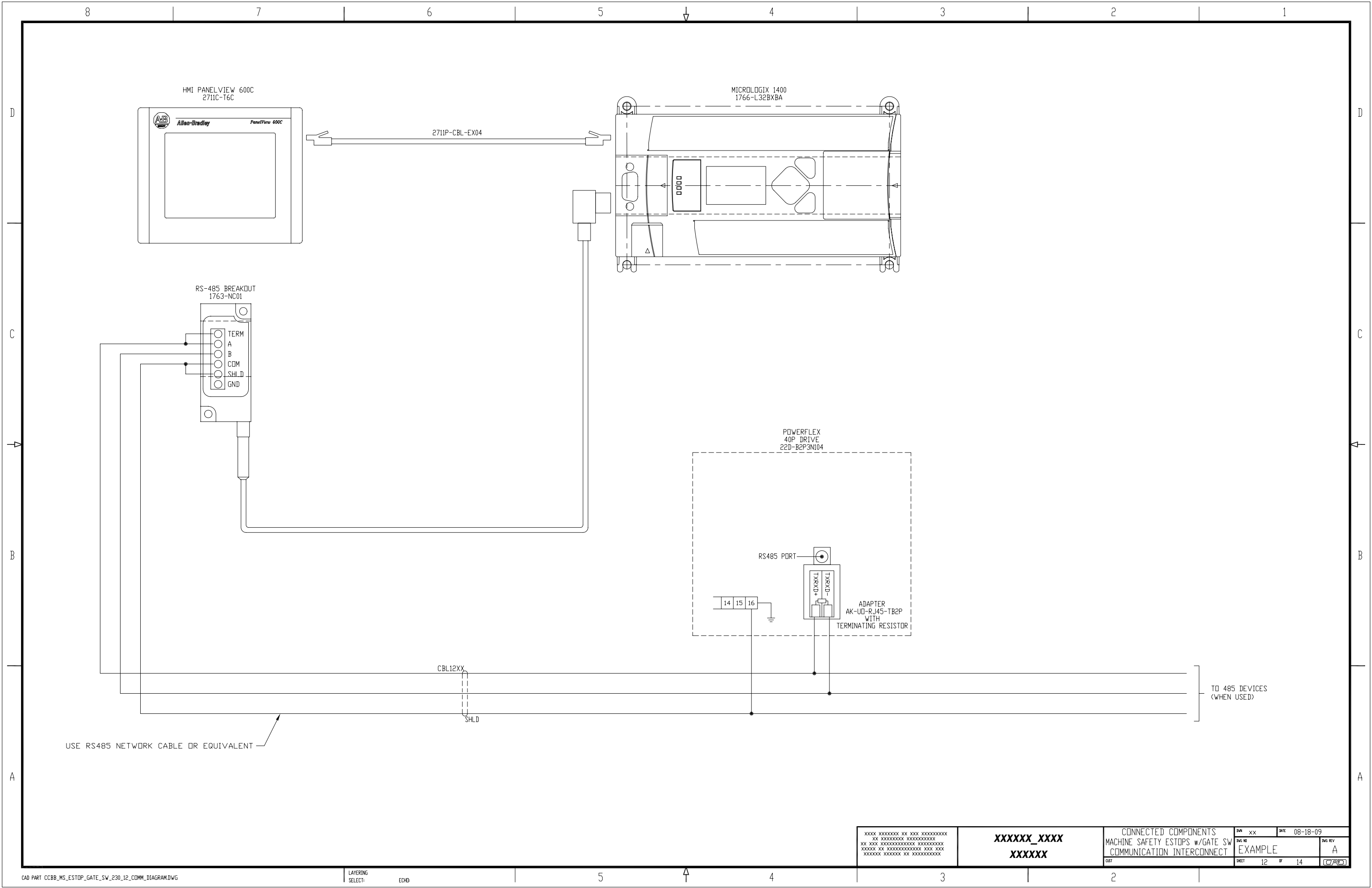


XXXXX_XXXX XXXXXX	CONNECTED COMPONENTS MACHINE SAFETY ESTOPS w/GATE SW SPARE	DWG NO EXAMPLE	DATE 08-18-09
	DWT 09	DWG REV A	OF 14





XXXX XXXXXXXX XX XXX XXXXXXXXXXXX XX XXXXXXXXXXXX XXXXXXXXXXXX XX XXX XXXXXXXXXXXX XXXXXXXXXXXX XXXXX XX XXXXXXXXXXXX XXX XXX XXXXXX XXXXXXXX XX XXXXXXXXXXXX	<b>XXXXXX_XXXX</b> <b>XXXXXX</b>	CONNECTED COMPONENTS MACHINE SAFETY ESTOPS w/GATE SW SPARE		DWG NO <b>EXAMPLE</b>	DATE 08-18-09 DWG REV <b>A</b>
		SHEET 11 OF 14			(C)



HMI PANELVIEW 600C  
2711C-T6C

MICROLOGIX 1400  
1766-L32BXBA

2711P-CBL-EX04

RS-485 BREAKOUT  
1763-NC01

TERM  
A  
B  
COM  
SHLD  
GND

POWERFLEX  
40P DRIVE  
22D-B2P3N104

RS485 PORT

TXRD  
TXRD+

ADAPTER  
AK-U0-RJ45-TB2P  
WITH  
TERMINATING RESISTOR

14 15 16

CBL12XX

SHLD

TO 485 DEVICES  
(WHEN USED)

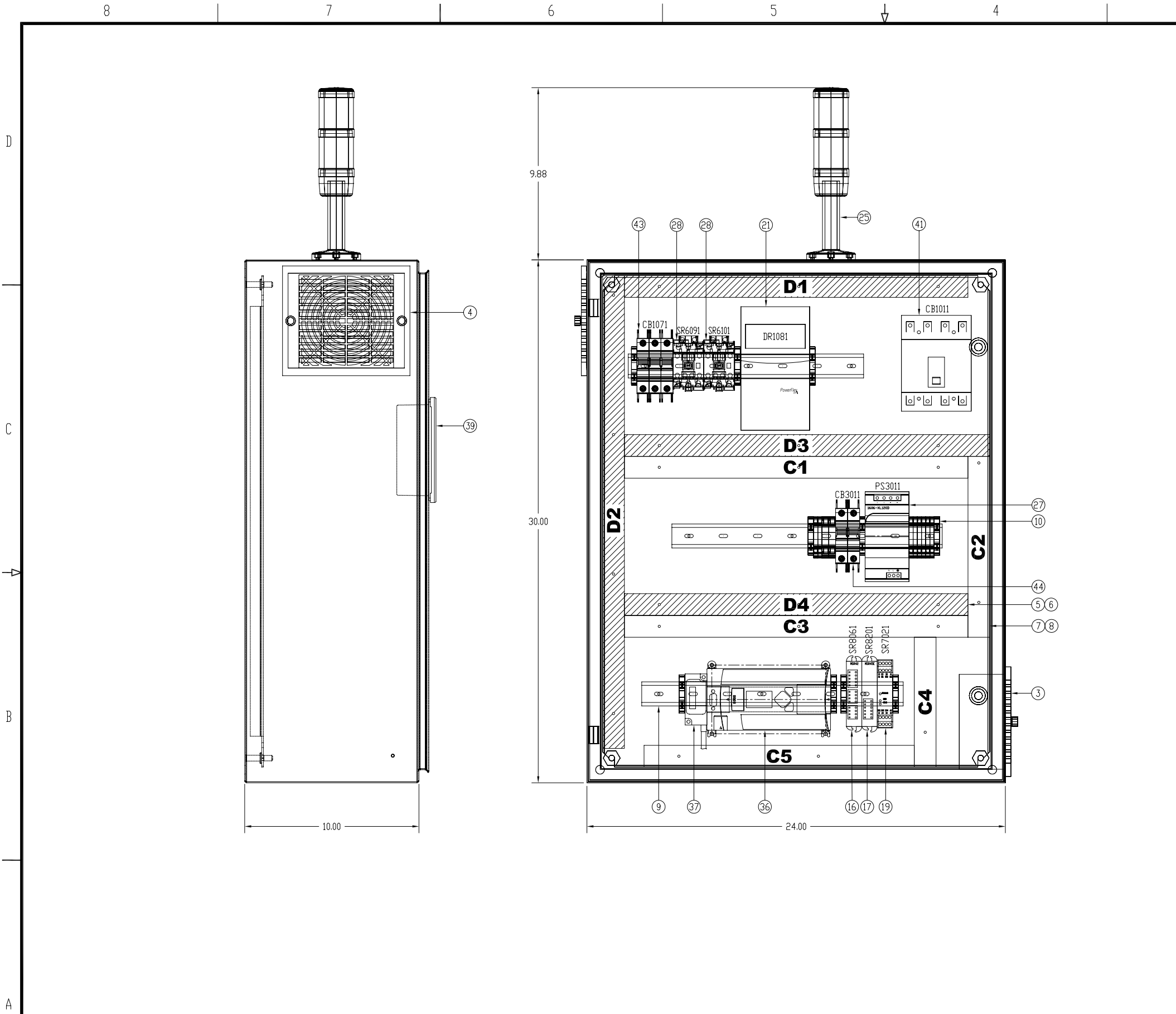
USE RS485 NETWORK CABLE OR EQUIVALENT

XXXX XXXXXXXX XX XXX XXXXXXXXXXXX  
XX XXXXXXXXXXXX XXXXXXXXXXXX  
XX XXX XXXXXXXXXXXX XXXXXXXXXXXX  
XXXXXXXX XX XXXXXXXXXXXX XXX XXX  
XXXXXXXX XXXXXXX XX XXXXXXXXXXXX

XXXXXX\_XXXX  
XXXXXX

CONNECTED COMPONENTS  
MACHINE SAFETY ESTOPS w/GATE SW  
COMMUNICATION INTERCONNECT

DWG NO	DATE	DWG REV
EXAMPLE	08-18-09	A
SHEET	OF	DATE
12	14	08/18/09



ITEM	QTY	DESCRIPTION	MFG	CATALOG
1	1	NEMA1 ENCLOSURE 30"X24"X10"	HOFFMAN	CSD302410
2	1	PANEL FOR ENCLOSURE 21"X22.5"	HOFFMAN	CP3024
3	1	FAN KIT 115VAC WITH FILTER	HOFFMAN	TFP41
4	1	EXHAUST GRILL WITH FILTER	HOFFMAN	TEP4
5	-	PANDUIT WIRE DUCT, 1"X4" GRAY	PANDUIT	F1X4LG6
6	-	PANDUIT WIRE DUCT COVER, 1" GRAY	PANDUIT	C1LG6
7	-	PANDUIT WIRE DUCT, 1"X4" WHITE	PANDUIT	F1X4WH6
8	-	PANDUIT WIRE DUCT COVER, 1" WHITE	PANDUIT	C1WH6
9	-	35MM DIN RAIL	AB	199-DR1
10	9	END ANCHOR USED W/STANDARD 35MM DIN	AB	1492-EAJ35
SAFETY SYSTEM COMPONENTS				
11	1	MICRO 400 SAFETY LIGHT CURTAIN, RES 30mm	AB	445L-P4C0600FP
12	2	M12 TO RJ45, 3 METER	AB	445L-AC8RJ3
13	1	OPTICAL INTERFACE TOOL	AB	445L-AF6150
14	1	OPTICAL INTERFACE FASTENER	AB	445L-AF6152
15	2	MICRO 400 ADJUSTABLE MOUNTING KIT	AB	445L-AF6143
16	1	MSR42 MULTI FUNCTION CONTROLLER	AB	440R-P226AGS-NNR
17	1	MSR45E RELAY EXTENSION	AB	440R-P4NANS
18	1	RIBBON CABLE, 10PIN FOR 1 EXTENSION	AB	440R-ACABL1
19	1	MINDTAUR MSR127RTP 24VAC/DC 2NC. IN, 1 NC. OUT	AB	440R-N23135S
20	4	SENSAGUARD NON-CONTACT SAFETY SW. 3m	AB	440N-Z21SS2AN9
21	1	POWERFLEX 40P AC DRIVE 240VAC, 2.3A, 0.5HP	AB	22D-B2P3N104
22	1	SAFE-OFF OPTION (SERIES B) FOR POWERFLEX	AB	20A-DG01
25	1	STACKLIGHT 24V GREEN STEADY, RED FLASHING	AB	855EP-B24Y3L4
CONTROLS GROUP SELECTION				
27	1	POWER SUPPLY 24VDC 120W 120/240V INPUT	AB	1606-XL120D
28	2	MCS100S-C SAFETY CONTACTOR 30A 24V	AB	100S-C30EJ14BC
31	1	800F PUSHBUTTON FLUSH GREEN	AB	800FP-F3
32	1	800F LEGEND PLATE "START"	AB	800F-11BE208
33	1	PLASTIC LATCH	AB	800F-ALP
34	3	22.5mm PB NO LATCH CONTACT BLOCK 1NO.	AB	800F-X10
MICROLOGIX GROUP SECTION				
36	1	MICROLOGIX 1400, 24VDC POWER	AB	1766-L32BXBA
37	1	CABLE MICROLOGIX CHANNEL0 RS-485 ADAPTER	AB	1763-NC01
39	1	6" COLOR (TRANSMISSIVE CSTN) TOUCHSCREEN	AB	2711C-T6C
40	1	ETHERNET CAT5 CROSSOVER CABLE 4.3m(14FT)	AB	2711P-CBL-EX04
POWER CIRCUIT COMPONENTS				
380VAC-480VAC, 4POLE CB. DISCONNECT OPTION				
41	1	IEC MOLDED CASE C.B., 160A, H-FRAME, RATED 32A	AB	140UE-H2E4-C32
42	1	ROTARY, VARIABLE-DEPTH OPERATING MECHANISM	AB	140U-H-RVM12R
43	1	UL489/CSA 22.2 NO 5.1 BREAKER, 3POLE, 10AMP	AB	1489-A2C100
44	1	UL489/CSA 22.2 NO 5.1 BREAKER, 2POLE, 10AMP	AB	1489-A2D100
POWER OPTION 380/400VAC, 3POLE FUSED DISCONNECT				
45	1	194R DISCONNECT, OPEN STYLE, DIN, 32A, 3POLE	AB	194R-D32-1753
46	1	OPERATING HANDLE, WITH DEFEATER, RED/YELLOW	AB	194R-HS4E
47	1	OPERATING SHAFT, STD. LENGTH, 263mm(10.3 IN.)	AB	194R-R1
48	1	UL489/CSA 22.2 NO 5.1 BREAKER, 3POLE, 10AMP	AB	1489-A2C100
49	1	UL489/CSA 22.2 NO 5.1 BREAKER, 2POLE, 10AMP	AB	1489-A2D100
POWER CIRCUIT OPTION 480VAC, 3 POLE FUSED DISCONNECT				
50	1	194R DISCONNECT, OPEN STYLE, 30A, 3POLE	AB	194R-C30-1753
51	1	OPERATING HANDLE, WITH DEFEATER, RED/YELLOW	AB	194R-HS4E
52	1	OPERATING SHAFT, STD LENGTH, 263MM(10.3 IN.)	AB	194R-R1
53	1	UL489/CSA 22.2 NO 5.1 BREAKER, 3POLE, 10AMP	AB	1489-A2C100
54	1	UL489/CSA 22.2 NO 5.1 BREAKER, 2POLE, 10AMP	AB	1489-A2D100
PROGRAMMING SOFTWARE				
45	1	RSLOGIX MICRO STARTER (ENGLISH) CD-ROM	AB	9324-RLM0100ENE

NOTES:  
 1. WIREWAYS MARKED Cx/Dx INDICATE CLEAN/DIRTY SIGNAL/POWER  
 2. FOR FURTHER INFORMATION ON SYSTEM DESIGN FOR CONTROL OF ELECTRICAL NOISE SEE ROCKWELL PUBLICATION #GMC RM001-EN-P

XXXX XXXXXXXX XX XXX XXXXXXXXXX XX XXX XXXXXXXXXX XXXXXXXXXX XXXXXX XX XXXXXXXXXX XXX XXX XXXXXX XXXXXXXX XX XXXXXXXXXX	XXXXXX_XXXX XXXXXX	CONNECTED COMPONENTS MACHINE SAFETY ESTOPS w/GATE SW PANEL LAYOUT	DWG NO. XX DATE 08-18-09 REV. 13 OF 14	DWG REV. A
--	-----------------------	---	---	------------

