

- NOTES:
1. ALL WIRES TO BE xxxV, xx*, xxx.
 2. OBSERVE DIRTY/CLEAN WIRING PRACTICES.
 3. Dx/Cx MARKERS INDICATE POTENTIAL ROUTING WIRING.
 4. ALL WIRES ARE #xx AWG, UNLESS OTHERWISE NOTED.
 5. ALL WIRES ARE xxx, UNLESS OTHERWISE NOTED.
 6. ALL GROUND WIRES ARE #xx AWG xxxxxx, UNLESS OTHERWISE NOTED.

THIS SPACE INTENTIONALLY LEFT BLANK

XXXXX_XXXX XXXXXX	SIMPLE SAFETY LIGHT CURTAIN w/GUARD I/O POWER DISTRIBUTION		DWG: XX DATE: 01-10-09
	DWT: 1 OF: XX	DWT: 1 OF: XX	DWT: 1 OF: XX

8 7 6 5 4 3 2 1

D

C

B

A

D

C

B

A

1011
Yfrom 135
1012
Yfrom 135
1013
Yfrom 134

1011 1012 1013

to 218
1013
to 218
1012
to 218
1011

THIS SPACE INTENTIONALLY LEFT BLANK

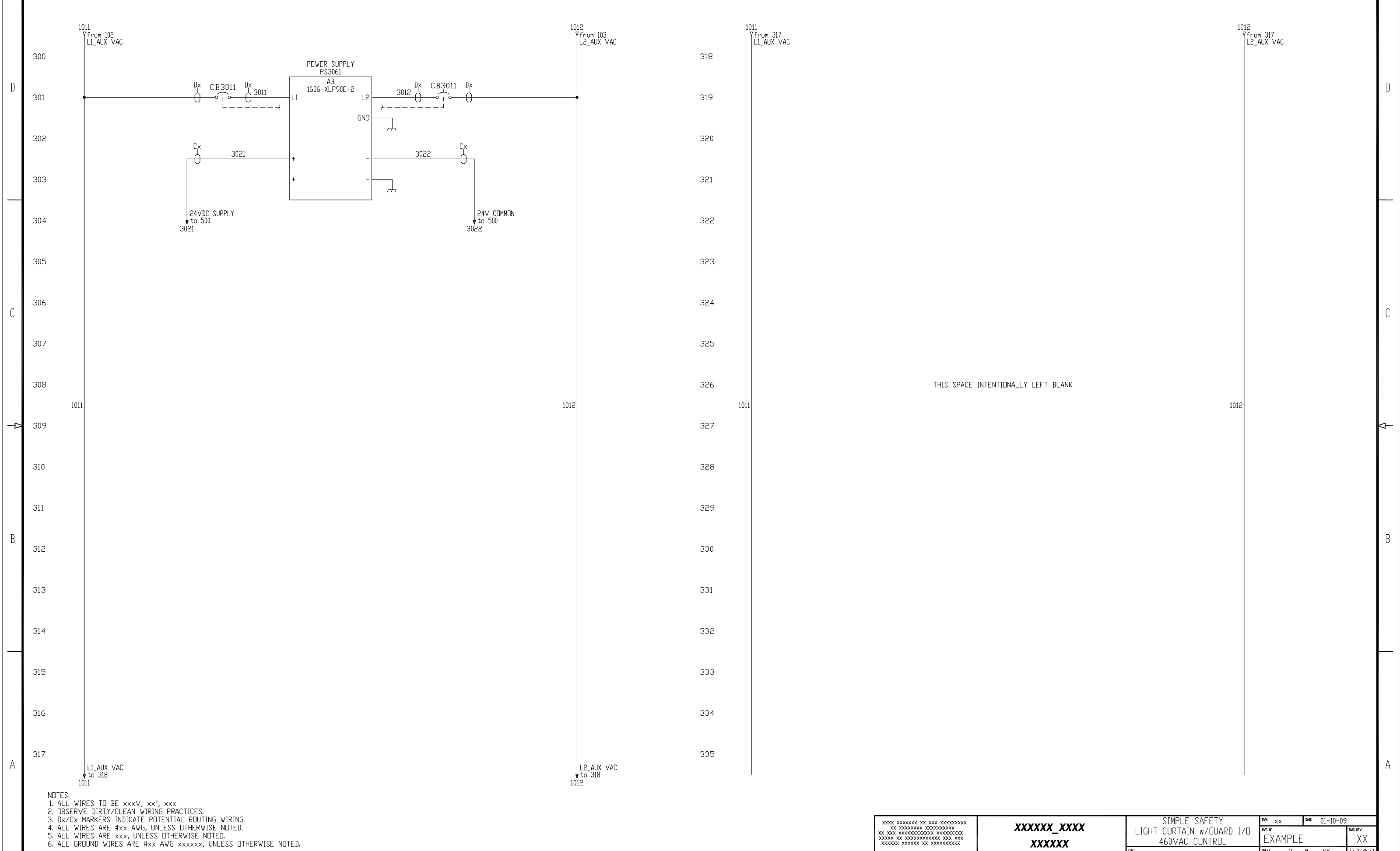
1011
Yfrom 217
1012
Yfrom 217
1013
Yfrom 216

1011 1012 1013

218
219
220
221
222
223
224
225
226
227
228
229
230
231
232
233
234
235

THIS SPACE INTENTIONALLY LEFT BLANK

XXXX XXXXXXXX XX XXX XXXXXXXXXXXX XX XXXXXXXXXXXX XXXXXXXXXXXX XX XXX XXXXXXXXXXXX XXXXXXXXXXXX XXXXXX XX XXXXXXXXXXXX XXX XXX XXXXXX XXXXXXXX XX XXXXXXXXXXXX	XXXXXX_XXXX XXXXXX	SIMPLE SAFETY LIGHT CURTAIN w/GUARD I/O POWER DISTRIBUTION		DWG XX	DATE 01-10-09
		DWG NO EXAMPLE	DWG REV XX	SHEET 2 OF XX	<input type="checkbox"/>



THIS SPACE INTENTIONALLY LEFT BLANK

- NOTES:
1. ALL WIRES TO BE xxxV, xx*, xxx.
 2. OBSERVE DIRTY/CLEAN WIRING PRACTICES.
 3. Dx/Cx MARKERS INDICATE POTENTIAL ROUTING WIRING.
 4. ALL WIRES ARE #xx AWG, UNLESS OTHERWISE NOTED.
 5. ALL WIRES ARE xxx, UNLESS OTHERWISE NOTED.
 6. ALL GROUND WIRES ARE #xx AWG xxxxxx, UNLESS OTHERWISE NOTED.

XXXXX_XXXX XXXXXX	SIMPLE SAFETY LIGHT CURTAIN w/GUARD I/O 460VAC CONTROL	DWG XX DATE 01-10-09
	DWT 3 OF XX	DWG REV XX

D

C

B

A

D

C

B

A

1013
from 105
VAC CONTROL

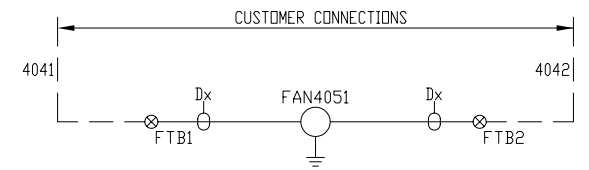
N
from 106
VAC NEUTRAL

1013
from 417
VAC CONTROL

N
from 417
VAC NEUTRAL

400
401
402
403
404
405
406
407
408
409
410
411
412
413
414
415
416
417

418
419
420
421
422
423
424
425
426
427
428
429
430
431
432
433
434
435



THIS SPACE INTENTIONALLY LEFT BLANK

1013

N

1013

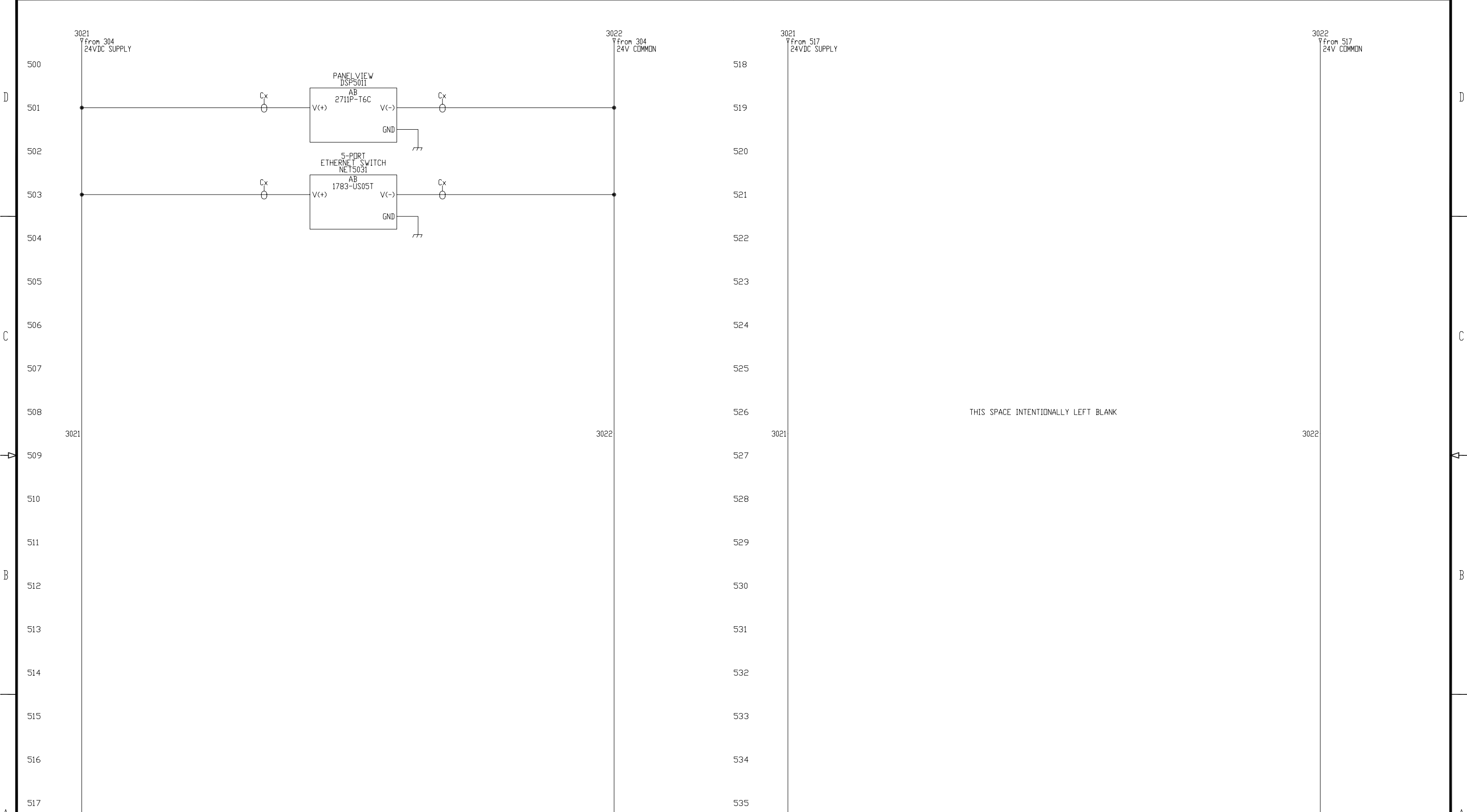
N

VAC CONTROL
to 418
1013

VAC NEUTRAL
to 418
N

- NOTES:
1. ALL WIRES TO BE xxxV, xx*, xxx.
 2. OBSERVE DIRTY/CLEAN WIRING PRACTICES.
 3. Dx/Cx MARKERS INDICATE POTENTIAL ROUTING WIRING.
 4. ALL WIRES ARE #xx AWG, UNLESS OTHERWISE NOTED.
 5. ALL WIRES ARE xxx, UNLESS OTHERWISE NOTED.
 6. ALL GROUND WIRES ARE #xx AWG xxxxxx, UNLESS OTHERWISE NOTED.

XXXXXXXX_XXXX XXXXXXXX	SIMPLE SAFETY LIGHT CURTAIN w/GUARD I/O AUX VAC CONTROL		DWG XX	DATE 01-10-09
	DWT DWT 4 OF XX		DWG ID EXAMPLE	DWG REV XX



THIS SPACE INTENTIONALLY LEFT BLANK

<p>NOTES: 1. ALL WIRES TO BE xxxV, xx*, xxx. 2. OBSERVE DIRTY/CLEAN WIRING PRACTICES. 3. Dx/Cx MARKERS INDICATE POTENTIAL ROUTING WIRING. 4. ALL WIRES ARE #xx AWG, UNLESS OTHERWISE NOTED. 5. ALL WIRES ARE xxx, UNLESS OTHERWISE NOTED. 6. ALL GROUND WIRES ARE #xx AWG xxxxxx, UNLESS OTHERWISE NOTED.</p>	<p>24VDC SUPPLY to 518 3021</p> <p>24VDC SUPPLY to 600 3021</p>	<p>24VDC SUPPLY from 304 3021</p> <p>24VDC SUPPLY from 517 3021</p>	<p>24VDC SUPPLY from 304 3022</p> <p>24VDC SUPPLY from 517 3022</p>	<p>24VDC SUPPLY from 304 3022</p> <p>24VDC SUPPLY from 517 3022</p>	<p>24VDC SUPPLY from 304 3021</p> <p>24VDC SUPPLY from 517 3021</p>	<p>24VDC SUPPLY from 304 3022</p> <p>24VDC SUPPLY from 517 3022</p>
---	---	---	---	---	---	---

D

C

B

A

D

C

B

A

3021
from 535
24VDC SUPPLY

3022
from 535
24V COMMON

3021
from 617
24VDC SUPPLY

3022
from 617
24V COMMON

3021

3022

3021

3022

THIS SPACE INTENTIONALLY LEFT BLANK

24VDC SUPPLY
to 618
3021

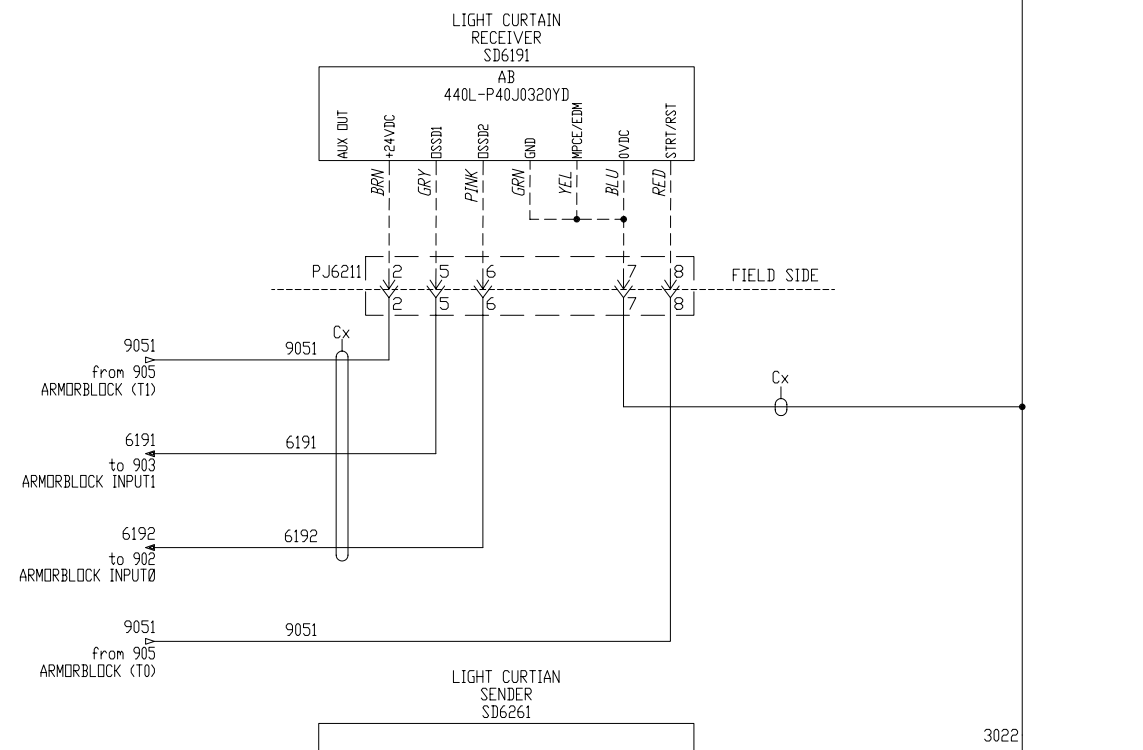
24V COMMON
to 618
3022

24VDC SUPPLY
to 700
3021

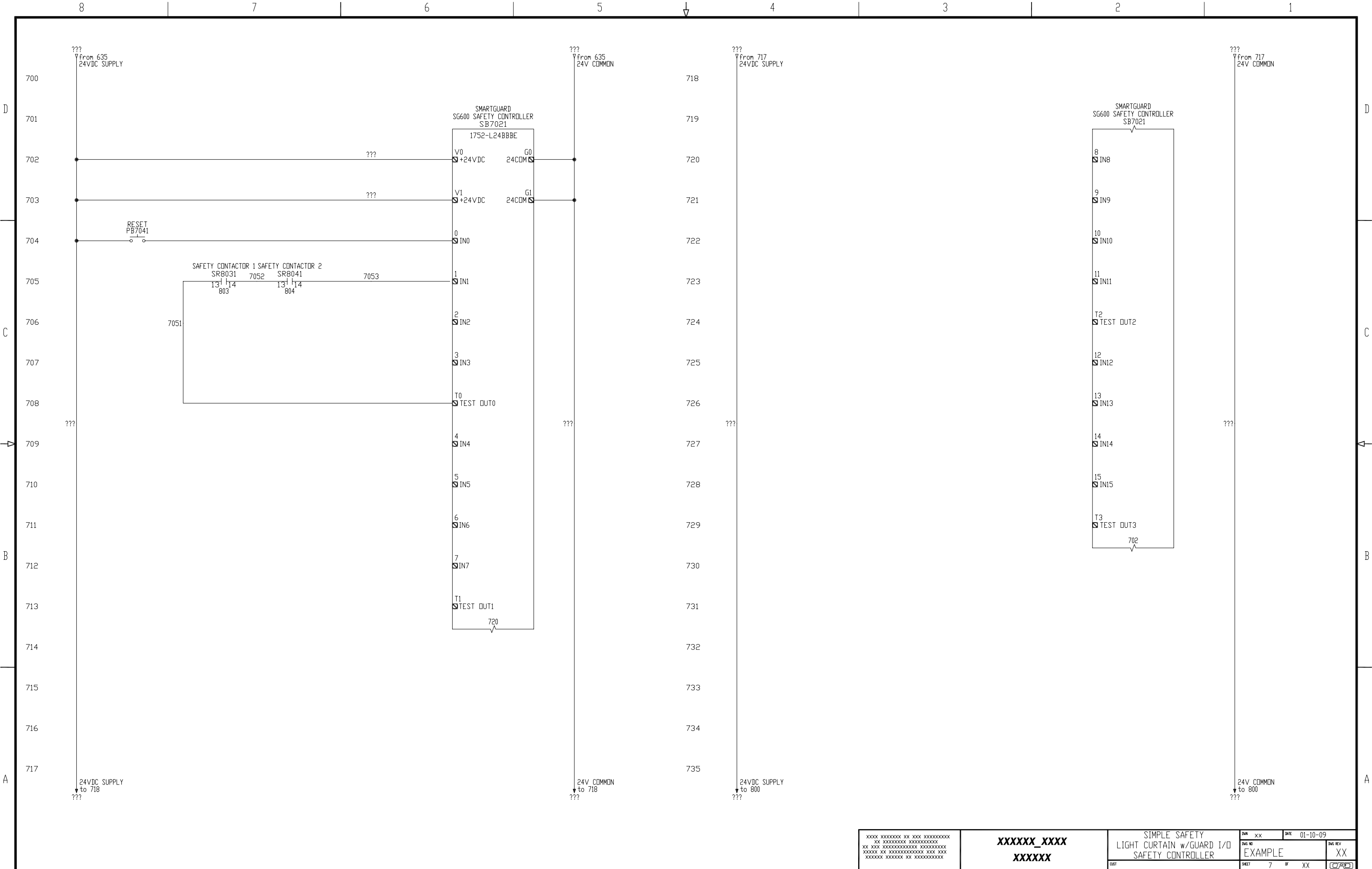
24V COMMON
to 700
3022

- NOTES:
1. ALL WIRES TO BE xxxV, xx*, xxx.
 2. OBSERVE DIRTY/CLEAN WIRING PRACTICES.
 3. Dx/Cx MARKERS INDICATE POTENTIAL ROUTING WIRING.
 4. ALL WIRES ARE #xx AWG, UNLESS OTHERWISE NOTED.
 5. ALL WIRES ARE xxx, UNLESS OTHERWISE NOTED.
 6. ALL GROUND WIRES ARE #xx AWG xxxxxx, UNLESS OTHERWISE NOTED.

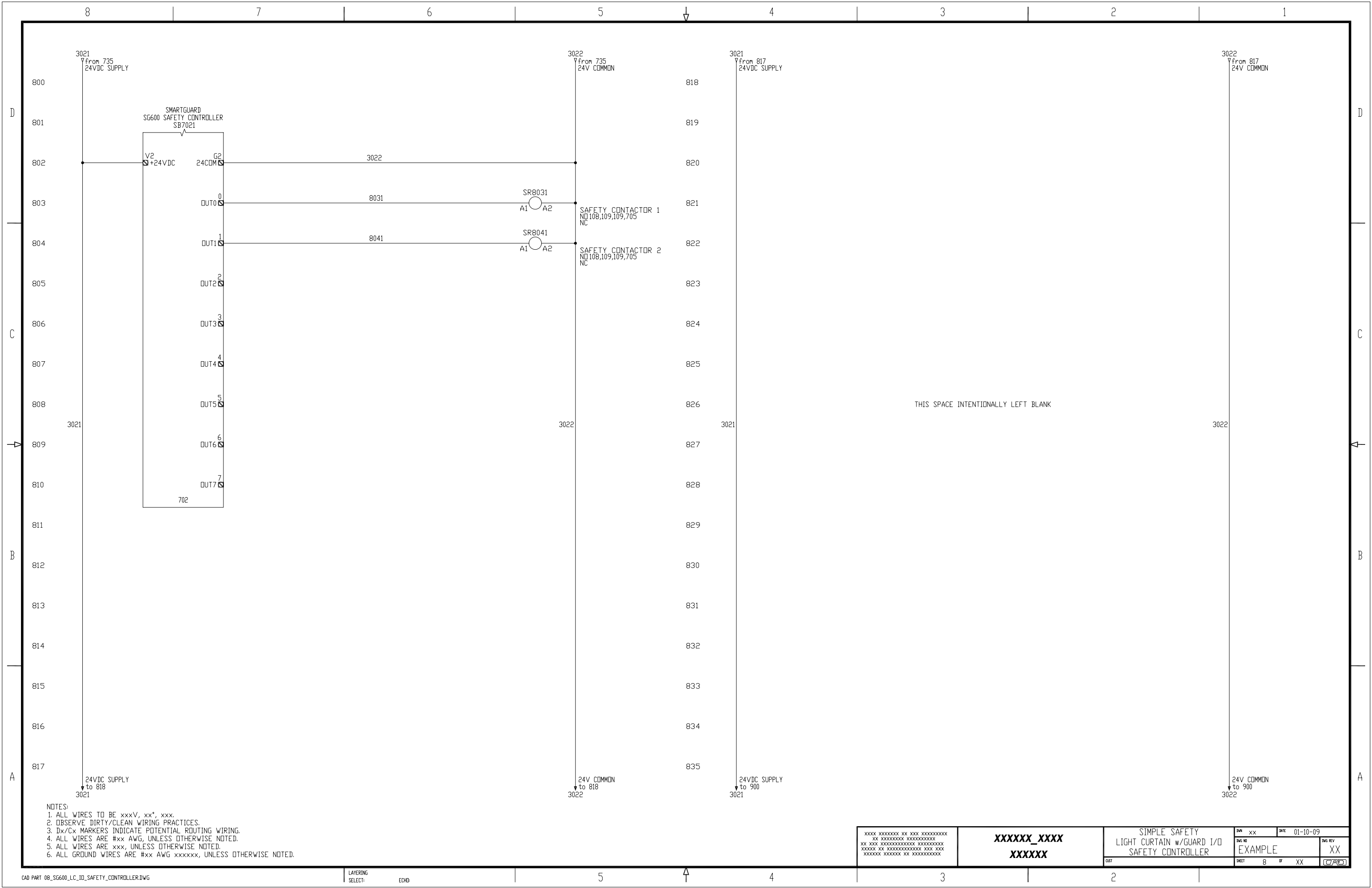
618
619
620
621
622
623
624
625
626
627
628
629
630
631
632
633
634
635



XXXX XXXXXXXX XX XXX XXXXXXXXXXXX XX XXX XXXXXXXXXXXX XXXXXXXXXXXX XXXXXXXX XX XXXXXXXXXXXXXXXX XXX XXX XXXXXXXX XXXXXX XX XXXXXXXXXXXX	XXXXXX_XXXX XXXXXX	SIMPLE SAFETY LIGHT CURTAIN w/GUARD I/O LIGHT CURTAIN	DWG NO EXAMPLE	DATE 01-10-09	DWG REV XX
			SHEET 6	OF XX	CRD



XXXX XXXXXXXX XX XXX XXXXXXXXXXXX XX XXXXXXXXXXXX XXXXXXXXXXXXXXXX XX XXX XXXXXXXXXXXXXXXX XXXXXXXXXXXX XXXXXX XX XXXXXXXXXXXXXXXX XXX XXX XXXXXXX XXXXXXXX XX XXXXXXXXXXXXXXX	XXXXXX_XXXX XXXXXX	SIMPLE SAFETY LIGHT CURTAIN w/GUARD I/O SAFETY CONTROLLER	DWG XX DATE 01-10-09 DWT SHEET 7 OF XX	DWT REV XX EXAMPLE XX
--	-------------------------------------	---	---	-----------------------------



D

C

B

A

D

C

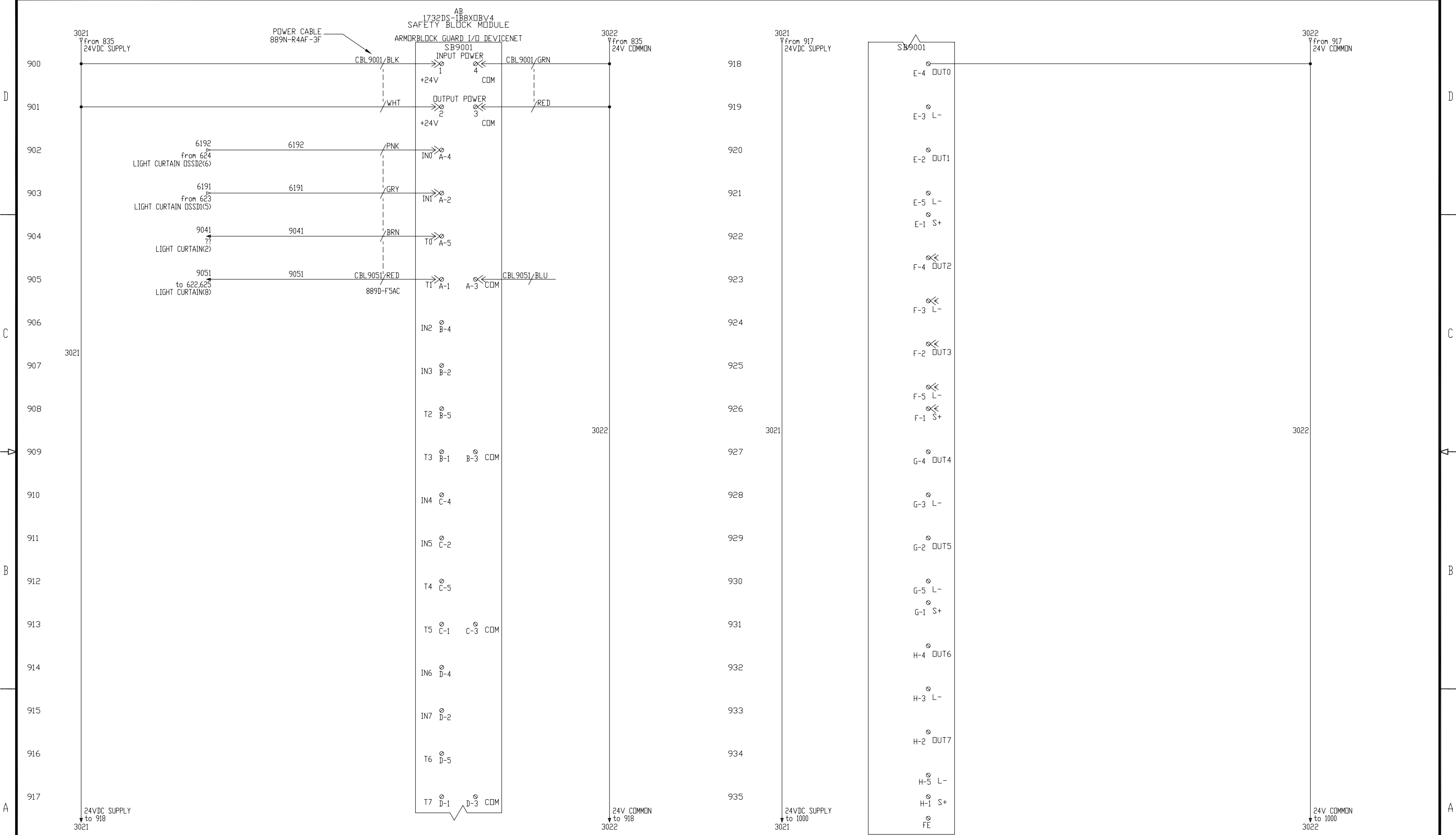
B

A

THIS SPACE INTENTIONALLY LEFT BLANK

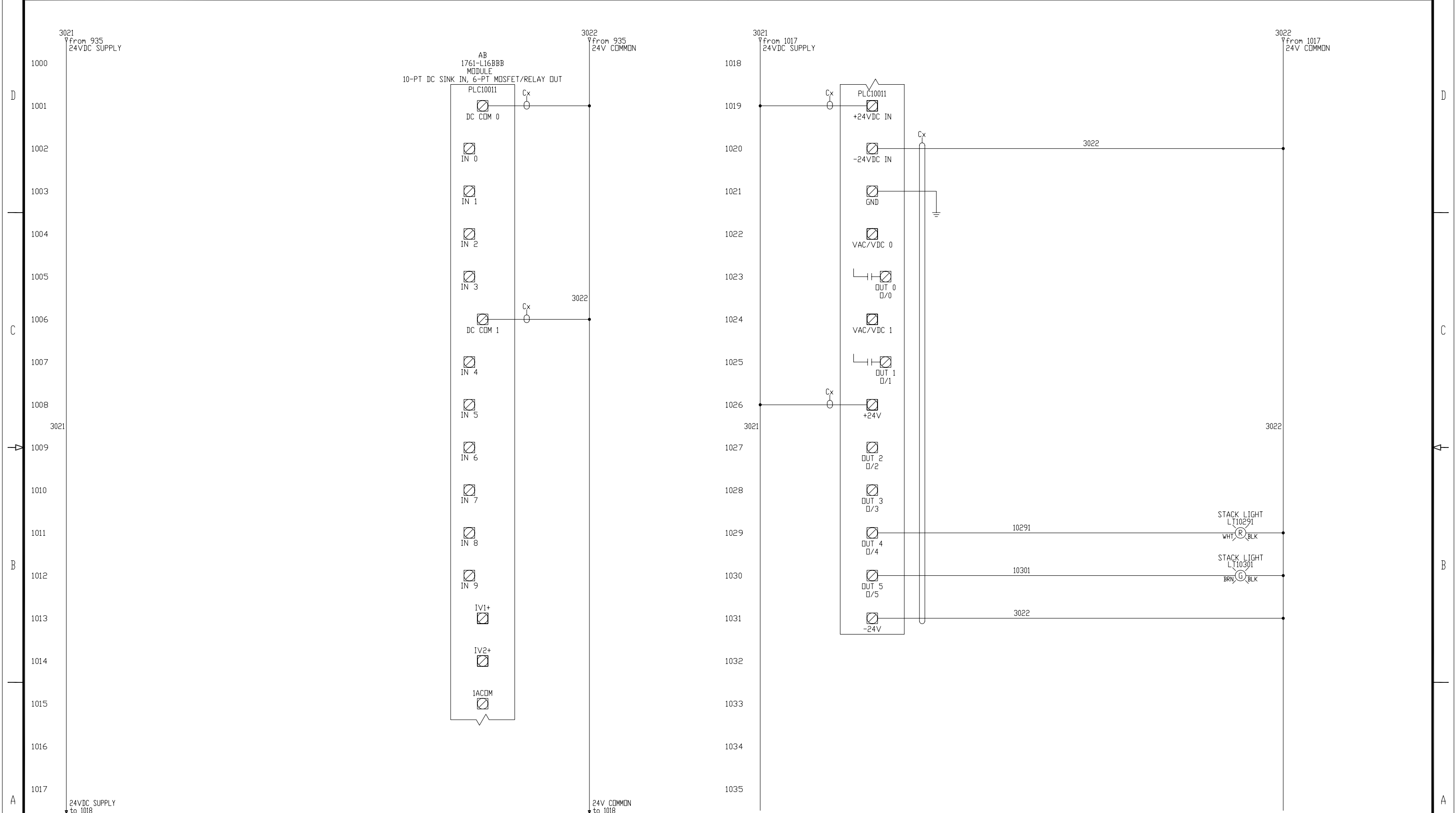
- NOTES:
1. ALL WIRES TO BE xxxV, xx*, xxx.
 2. OBSERVE DIRTY/CLEAN WIRING PRACTICES.
 3. Dx/Cx MARKERS INDICATE POTENTIAL ROUTING WIRING.
 4. ALL WIRES ARE #xx AWG, UNLESS OTHERWISE NOTED.
 5. ALL WIRES ARE xxx, UNLESS OTHERWISE NOTED.
 6. ALL GROUND WIRES ARE #xx AWG xxxxxxx, UNLESS OTHERWISE NOTED.

XXXX XXXXXXXX XX XXX XXXXXXXXXXXX XX XXXXXXXXXXXX XXXXXXXXXXXX XX XXX XXXXXXXXXXXX XXXXXXXXXXXX XXXXXXXX XX XXXXXXXXXXXX XXX XXX XXXXXXXX XXXXXXXX XX XXXXXXXXXXXX	XXXXXX_XXXX XXXXXX	SIMPLE SAFETY LIGHT CURTAIN w/GUARD I/O SAFETY CONTROLLER	DWG XX DATE 01-10-09	DWG REV XX
			SHEET 8 OF XX	(C/A/C)



NOTES:
 1. ALL WIRES TO BE xxxV, xx*, xxx.
 2. OBSERVE DIRTY/CLEAN WIRING PRACTICES.
 3. Dx/Cx MARKERS INDICATE POTENTIAL ROUTING WIRING.
 4. ALL WIRES ARE #xx AWG, UNLESS OTHERWISE NOTED.
 5. ALL WIRES ARE xxx, UNLESS OTHERWISE NOTED.
 6. ALL GROUND WIRES ARE #xx AWG xxxxxx, UNLESS OTHERWISE NOTED.

XXXX XXXXXXXX XX XXX XXXXXXXXXXXX XX XXXXXXXXXXXX XXXXXXXXXXXX XX XXX XXXXXXXXXXXX XXXXXXXXXXXX XXXXXXXX XX XXXXXXXXXXXX XXX XXX XXXXXXXX XXXXXX XX XXXXXXXXXXXX	XXXXXX_XXXX XXXXXX	SIMPLE SAFETY LIGHT CURTAIN w/GUARD I/O ARMORBLOCK I/O	DWG NO EXAMPLE	DATE 01-10-09	DWG REV XX
			SHEET 9	OF XX	



NOTES:
 1. ALL WIRES TO BE xxxV, xx*, xxx.
 2. OBSERVE DIRTY/CLEAN WIRING PRACTICES.
 3. Dx/Cx MARKERS INDICATE POTENTIAL ROUTING WIRING.
 4. ALL WIRES ARE #xx AWG, UNLESS OTHERWISE NOTED.
 5. ALL WIRES ARE xxx, UNLESS OTHERWISE NOTED.
 6. ALL GROUND WIRES ARE #xx AWG xxxxxx, UNLESS OTHERWISE NOTED.

XXXX XXXXXXXX XX XXX XXXXXXXXXXXX XX XXXXXXXXXXXX XXXXXXXXXXXX XXXXXX XX XXXXXXXXXXXXXXXX XXX XXX XXXXXXXX XXXXXX XX XXXXXXXXXXXXXXX	XXXXXX_XXXX XXXXXX	SIMPLE SAFETY LIGHT CURTAIN w/GUARD I/O MICROLOGIX PLC I/O	DWG NO EXAMPLE	DATE 01-10-09	DWG REV XX
			SHEET 10 OF XX		

8

7

6

5

4

3

2

1

D

C

B

A

D

C

B

A

1100
1101
1102
1103
1104
1105
1106
1107
1108
1109
1110
1111
1112
1113
1114
1115
1116
1117

1118
1119
1120
1121
1122
1123
1124
1125
1126
1127
1128
1129
1130
1131
1132
1133
1134
1135

THIS SPACE INTENTIONALLY LEFT BLANK

THIS SPACE INTENTIONALLY LEFT BLANK

5

4

3

2

XXXX XXXXXXXX XX XXX XXXXXXXXXXXX
XX XXXXXXXXXXXX XXXXXXXXXXXX
XX XXX XXXXXXXXXXXX XXXXXXXXXXXX
XXXXXXXX XX XXXXXXXXXXXX XXX XXX
XXXXXXXX XXXXXXX XX XXXXXXXXXXXX

XXXXXX_XXXX
XXXXXX

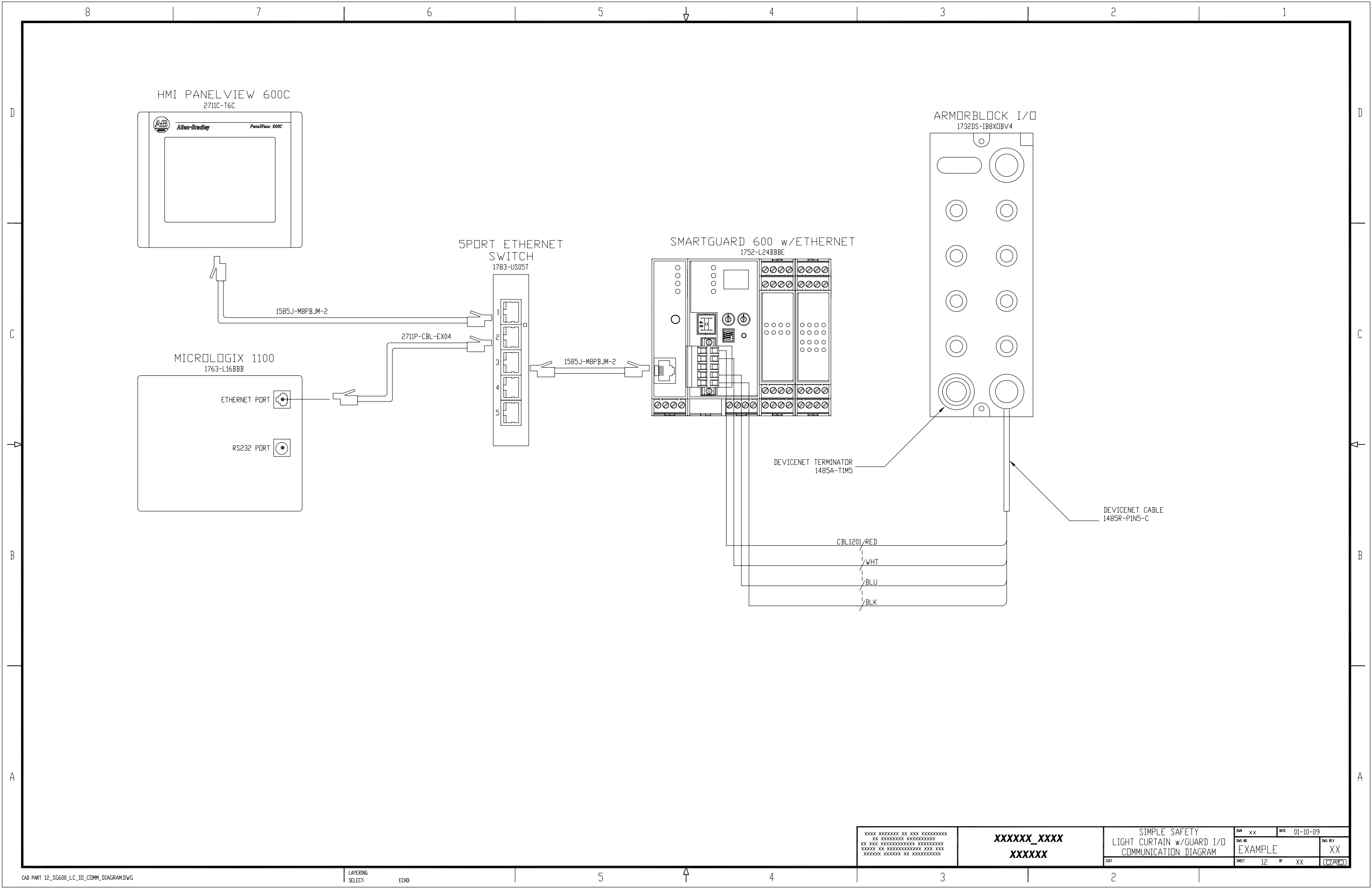
SIMPLE SAFETY
LIGHT CURTAIN w/GUARD I/O
PLC I/O SPARE

DWG XX DATE 01-10-09

DWG REV
EXAMPLE XX

SHEET 11 OF XX

CPD

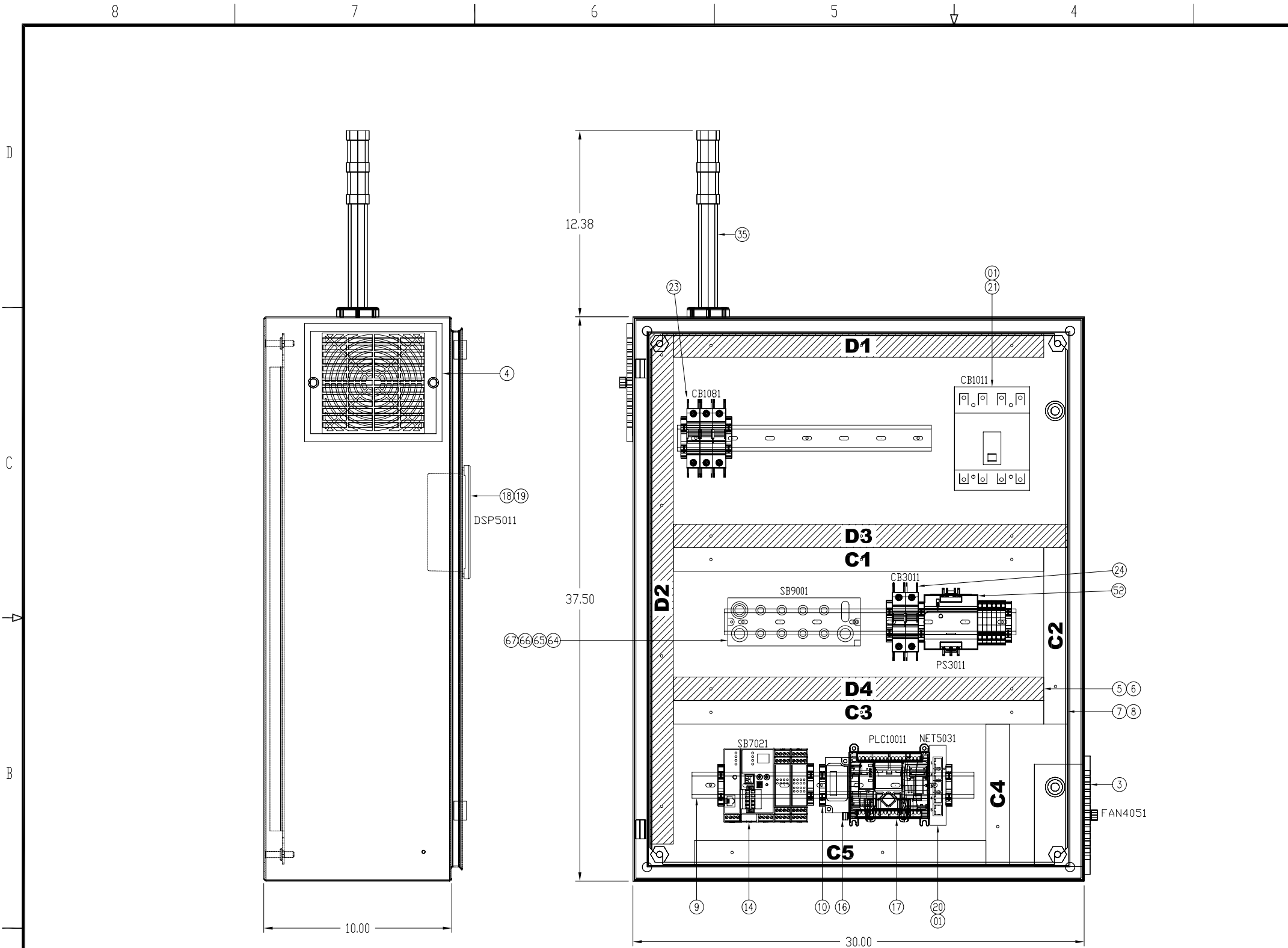


XXXX XXXXXXXX XX XXX XXXXXXXXXXXX
 XX XXXXXXXXXXXX XXXXXXXXXXXX
 XX XXX XXXXXXXXXXXX XXXXXXXXXXXX
 XXXXXX XX XXXXXXXXXXXX XXX XXX
 XXXXXXX XXXXXXX XX XXXXXXXXXXXX

XXXXXX_XXXX
XXXXXX

SIMPLE SAFETY
 LIGHT CURTAIN w/GUARD I/O
 COMMUNICATION DIAGRAM

DWG NO	DATE	DWG REV
EXAMPLE	01-10-09	XX
SHEET	OF	DATE
12	XX	01/10/09



ITEM	QTY	DESCRIPTION	MFG	CATALOG
1	1	NEMA1 ENCLOSURE 30"x24"x10"	HOFFMAN	CSD302410
2	1	PANEL FOR ENCLOSURE 21"x22.5"	HOFFMAN	CP3024
3	1	FAN KIT 115VAC WITH FILTER	HOFFMAN	TFP41
4	1	EXHAUST GRILL WITH FILTER	HOFFMAN	TEP4
5	-	PANDUIT WIRE DUCT, 1"x4" GRAY	PANDUIT	F1X4LG6
6	-	PANDUIT WIRE DUCT COVER, 1" GRAY	PANDUIT	C1LG6
7	-	PANDUIT WIRE DUCT, 1" X4" WHITE	PANDUIT	F1X4WH6
8	-	PANDUIT WIRE DUCT COVER, 1" WHITE	PANDUIT	C1WH6
9	-	35MM DIN RAIL	AB	199-DR1
10	9	END ANCHOR USED W/STANDARD 35MM DIN	AB	1492-EAJ35
11	-	-	-	-
12	-	-	-	-
13	-	-	-	-
14	1	SMARTGUARD 600 SMALL SAFETY CONTROLLER w/ETHERNET	AB	1752-L24BBB
CONTROL AND VISUALIZATION EQUIPMENT				
15	1	1763 MICROLOGIX 1100 SYSTEM GROUP SELECTION		
16	1	CABLE: MICROLOGIX 1100 CHANNEL 0 TO RS-485	AB	1763-NC01
17	1	MICROLOGIX 1100, 24V DC POWER	AB	1763-L16BBB
18	1	6" COLOR (TRANSMISSIVE CSTN) TOUCHSCREEN	AB	2711C-T6C
19	2	1585 ETHERNET CABLE, TEAL RISER PVC, 2 METER	AB	1585J-M8PBJM-2
20	1	STRATIX 2000 SWITCH, UNMANAGED, 5 COPPER PORTS	AB	1783-US05T
POWER CIRCUIT COMPONENTS				
380 VAC - 480 VAC, 4 POLE C.B. DISCONNECT OPTION				
21	1	IEC MOLDED CASE C.B., 160A, H-FRAME, RATED 32A	AB	140UE-H2E4-C32
22	1	ROTARY, VARIABLE-DEPTH OPERATING MECHANISM	AB	140U-H-RVM12R
23	1	UL489/CSA 22.2 NO 5.1 CIRCUIT BREAKER, 3 POLE, 7 AMP	AB	1489-A3C070
24	1	UL489/CSA 22.2 NO 5.1 CIRCUIT BREAKER, 2 POLE 10 AMP	AB	1489-A2D100
380/400 VAC, 3 POLE FUSED DISCONNECT OPTION				
25	1	194R DISCONNECT, OPEN STYLE, DIN, 32A, 3 POLE	AB	194R-D32-1753
26	1	OPERATING HANDLE, WITH DEFEATER, RED/YELLOW	AB	194R-HS4E
27	1	OPERATING SHAFT, STANDARD LENGTH, 263MM (10.3 IN.)	AB	194R-R1
28	1	UL489/CSA 22.2 NO 5.1 CIRCUIT BREAKER, 3 POLE, 7 AMP	AB	1489-A3C070
29	1	UL489/CSA 22.2 NO 5.1 CIRCUIT BREAKER, 2 POLE, 10 AMP	AB	1489-A2D100
480 VAC, 3 POLE FUSED DISCONNECT OPTION				
30	1	194R DISCONNECT, OPEN STYLE, 30A, 3 POLE	AB	194R-C30-1753
31	1	OPERATING HANDLE, WITH DEFEATER, RED/YELLOW	AB	194R-HS4E
32	1	OPERATING SHAFT, STANDARD LENGTH, 263MM (10.3 IN.)	AB	194R-R1
33	1	UL489/CSA 22.2 NO 5.1 CIRCUIT BREAKER, 3 POLE, 7 AMP	AB	1489-A3C070
34	1	UL489/CSA 22.2 NO 5.1 CIRCUIT BREAKER, 2 POLE, 10 AMP	AB	1489-A2D100
SENSORS/STACKLIGHTS				
35	1	COMPACT TOWER LIGHT, 30 MM, GRN, RED LED	AB	855D-P25SC20G24Y3Y4
36	1	PHOTOSWITCH PHOTOELECTRIC SENSOR, RIGHTSIGHT	AB	42EF-P2MPB-F4
37	1	60-2695 BRACKET, (USE W/ 60-2439, 60-2649)	AB	60-2695
38	1	PATCHCORD: DC MICRO (M12), FEMALE, STRAIGHT, 4-PIN	AB	889D-F4ACDM-2
39	1	RECEPTACLE, DC MICRO (M12), FEMALE, STRAIGHT, 4-PIN	AB	888D-F4AC1-1
PUSHBUTTONS				
40	1	800F 3 POSITION S.S. - PLASTIC, MAINTAINED, BLACK	AB	800FP-SM32
41	1	800F LEGEND PLATE, ENGLISH: AUTO - OFF - HAND	AB	800F-11WE104
42	2	22.5MM PB NO LATCH, SCREW CONTACT BLOCK, 1 N.O.	AB	800F-X10
43	1	PLASTIC LATCH	AB	800F-ALP
44	1	800F PUSH BUTTON - PLASTIC, FLUSH, GREEN, 1	AB	800FP-F306
45	1	PLASTIC LATCH	AB	800F-ALP
46	1	22.5MM PB NO LATCH, SCREW CONTACT BLOCK, 1 N.O.	AB	800F-X10
47	1	800F PUSH BUTTON - PLASTIC, EXTENDED, RED, 0	AB	800FP-E405
48	1	PLASTIC LATCH	AB	800F-ALP
49	1	22.5MM PB NO LATCH, SCREW CONTACT BLOCK, 1 N.O.	AB	800F-X10
PROGRAMMING SOFTWARE				
50	1	RSNETWORX FOR DEVICENET	AB	9357-DNETL3
51	1	RSLOGIX MICRO STARTER (ENGLISH) CD-ROM	AB	9324-RLM0100ENE

NOTES:
 1. WIREWAYS MARKED Cx/Dx INDICATE CLEAN/DIRTY SIGNAL/POWER
 2. FOR FURTHER INFORMATION ON SYSTEM DESIGN FOR CONTROL OF ELECTRICAL NOISE SEE ROCKWELL PUBLICATION #GMC RM001-EN-P

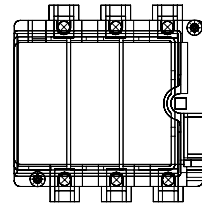
XXXX XXXXXXXX XX XXX XXXXXXXXXX
 XX XXXXXXXXXXXXXXXXXXXXXXXXXXXX
 XXXXXX XX XXXXXXXXXXXXXXXXXXXX
 XXXXXXX XXXXXXX XX XXXXXXXXXXXX

XXXXXX_XXXX
 XXXXXX

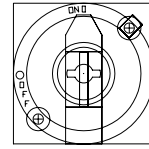
SIMPLE SAFETY
 LIGHT CURTAIN w/GUARD I/O
 PANEL LAYOUT

DWG NO	DATE	REV
EXAMPLE	10-17-08	XX
SHEET	OF	
13	XX	

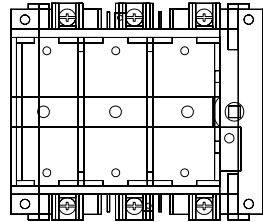
ADDITIONAL PARTS LIST



30 30A FUSED DISCONNECT



22 ROTARY VARIABLE DEPTH MECHANISM



25 60A FUSED DISCONNECT

0	0	CONTROL CIRCUIT COMPONENTS		
52	1	1606-XLP90E-2: COMPACT PWS, 24-28V, 90 W, 480VAC	AB	1606-XLP90E-2
	0			
	0	E-STOP PUSHBUTTON		
53	1	800F NON-ILLUMINATED MUSHROOM, TWIST TO RELEASE	AB	800FP-MT44
54	1	PLASTIC LATCH	AB	800F-ALP
55	2	22.5MM PB NO LATCH, SCREW CONTACT BLOCK, 1 N.C.	AB	800F-X01
	0			
	0	SAFETY EQUIPMENT		
56	1	TLS-3 GD2 INTERLOCK WITH 9-PIN QD CONNECTOR	AB	440G-T2NBBPH-2R
57	1	800F PUSH BUTTON - METAL, FLUSH, BLUE, 1 N.O.	AB	800FM-F6MX10
58	2	SAFETY C.R.Y, 8 POLE, 3 N.O. / 1 N.C. BASE, 1 N.O. / 3 N.C.	AB	700S-CFB440DC
59	1	FULLY-FLEXIBLE ACTUATOR (GD2 MODEL ONLY)	AB	440G-A27143
60	2	TERMINAL CHAMBER, DC MICRO (M12), STRAIGHT MALE, 5-PIN	AB	871A-TS5-DM1
61	1	800F ALTERNATE ACTION P.B. - METAL, FLUSH, BLACK	AB	800FM-FA2
62	1	METAL LATCH MOUNT, 1 N.O. CONTACT, 0 N.C. CONTACT	AB	800F-MX10
63	-	-	-	-
64	1	DEVICENET SAFETY 24VDC 8 INPUT/ 4 BIPOLAR OUTPUT	AB	1732DS-IB8X0BV4
65	1	DEVICENET CORDSET, TRUNK END: FEMALE MINI, STRAIGHT	AB	1485R-P1N5-C
66	1	DEVICENET TERMINATOR, TERMINATOR, MALE MINI, 1 PORT	AB	1485A-T1M5
67	1	CORDSET: MINI/MINI PLUS, FEMALE, R-ANG, 4-PIN	AB	889N-R4AF-3F

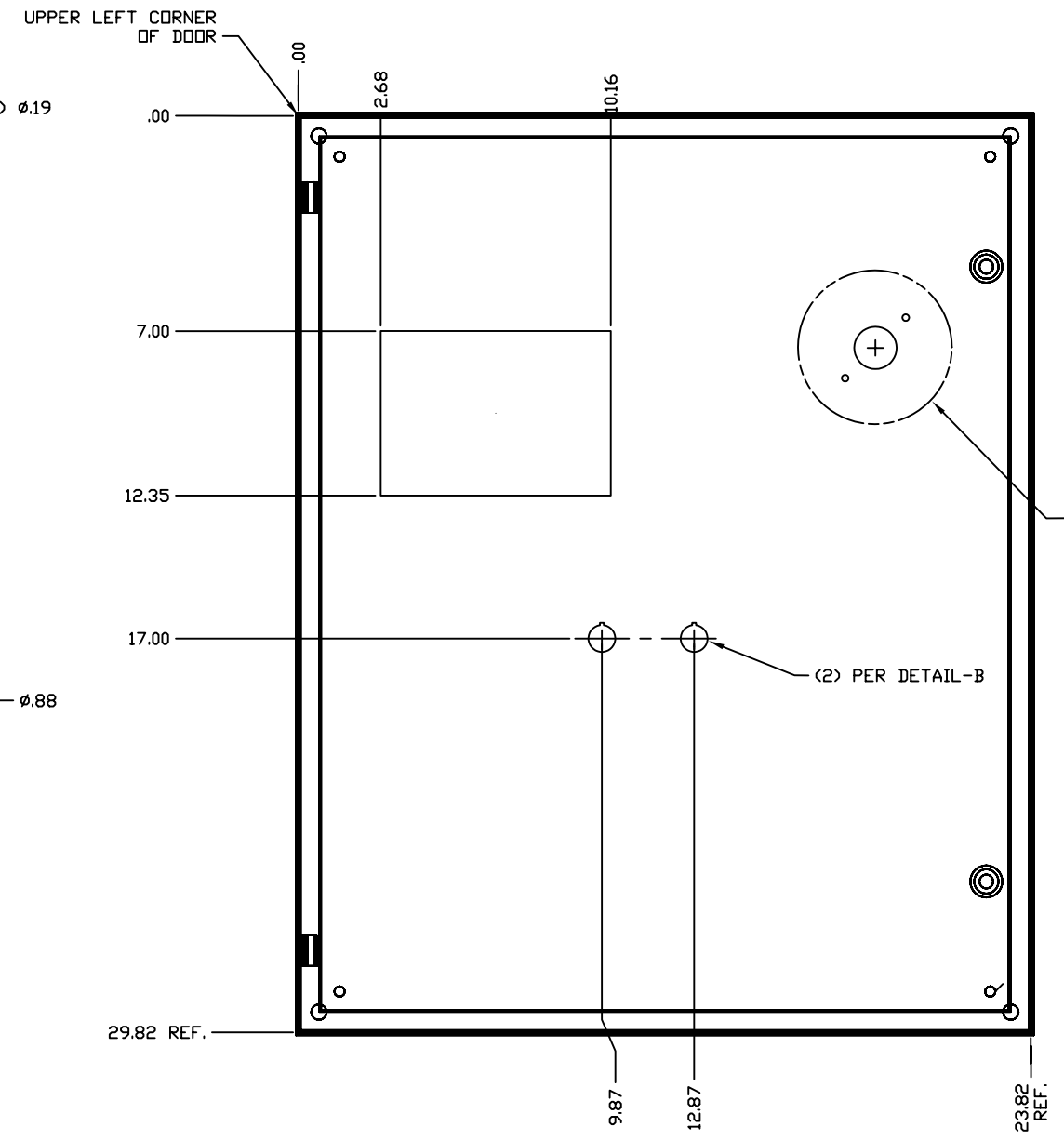
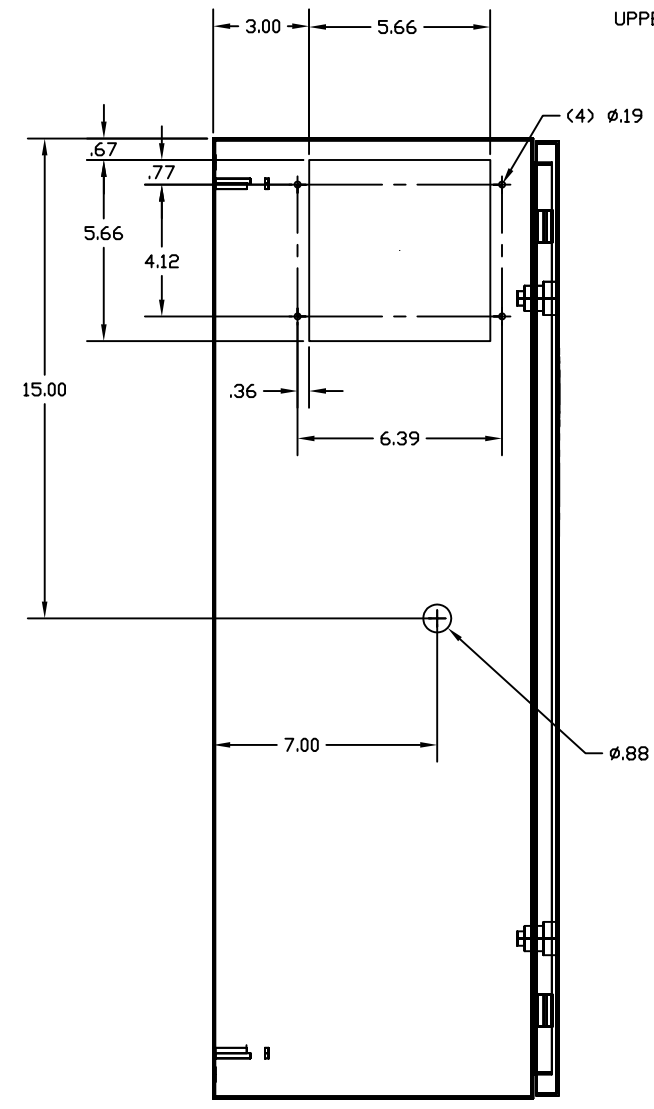
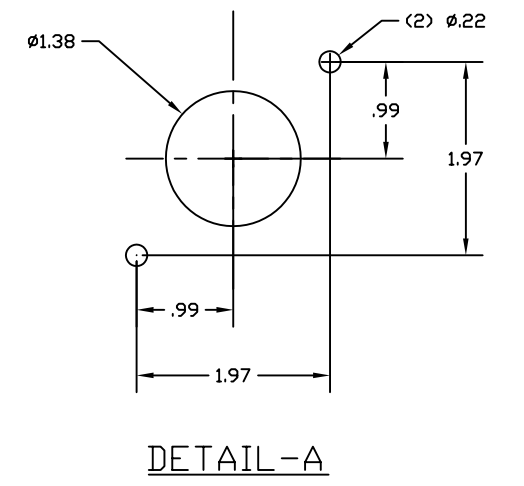
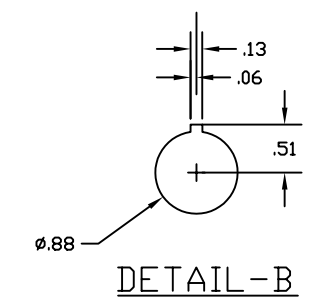
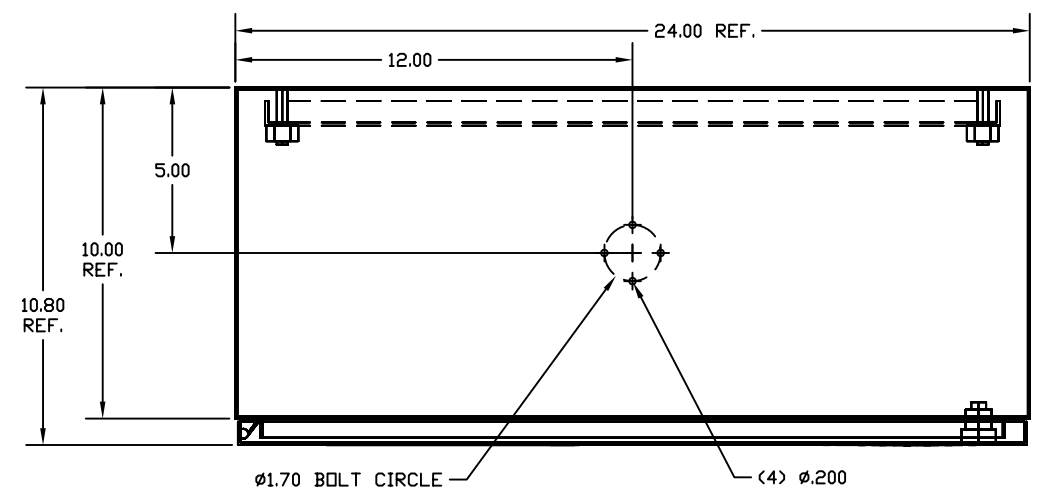
XXXX XXXXXXXX XX XXX XXXXXXXXXXXX XX XXXXXXXXXXXX XXXXXXXXXXXX XX XXX XXXXXXXXXXXX XXXXXXXXXXXX XXXXXX XX XXXXXXXXXXXX XXX XXX XXXXXXXX XXXXXXXX XX XXXXXXXXXXXX	XXXXXX_XXXX XXXXXX	SIMPLE SAFETY LIGHT CURTAIN w/GUARD I/O ADDITIONAL PARTS	DWG NO EXAMPLE	DATE 01-10-09	DWG REV XX
			SHEET 14	OF XX	(CR)

D

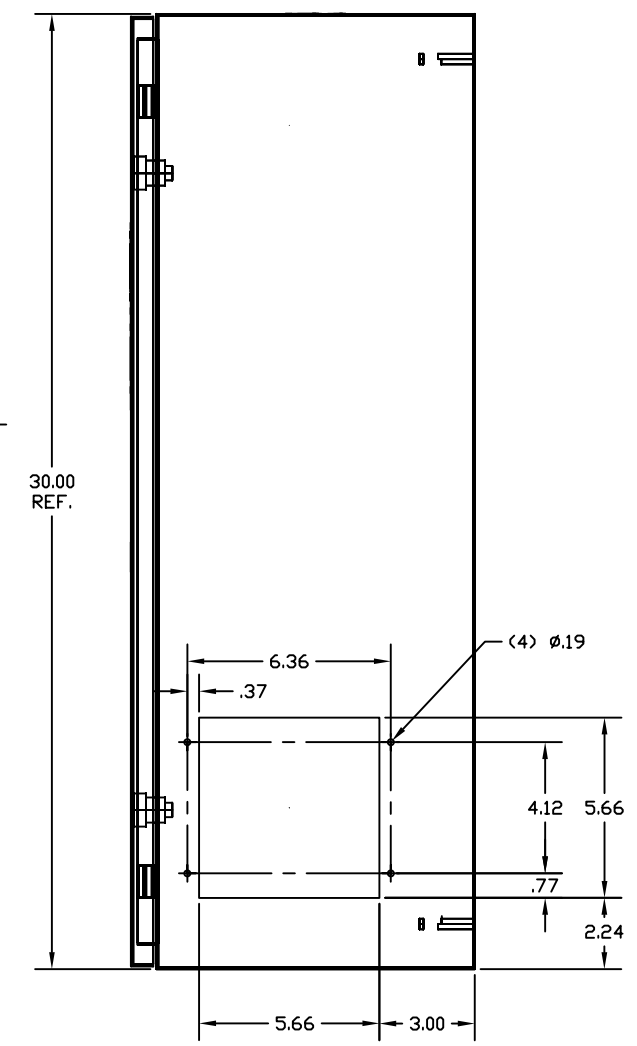
C

B

A



PER DETAIL-A,
(SEE SHEET 2 FOR ALL
OPERATOR OPTION
LOCATIONS)



DOOR MODIFICATION

-01	1	HOFFMAN PART CSD302410	ANSI 61 GRAY
PART NO.	CHG. CHAR.	MATERIAL	SURFACE TREATMENT

LAYERING SELECT: ECHD

XXXX XXXXXXXX XX XXX XXXXXXXXXX XX XXX XXXXXXXXXX XXXXXXXXXX XXXXXX XX XXXXXXXXXX XXX XXX XXXXXX XXXXXXXX XX XXXXXXXXXX	XXXXXX_XXXX XXXXXX	SIMPLE SAFETY LIGHT CURTAIN w/GUARD I/O ENCLOSURE DOOR LAYOUT	DATE 01-10-09 REV XX EXAMPLE SHEET 15 OF XX	DATE 01-10-09 REV XX EXAMPLE SHEET 15 OF XX
--	-----------------------	---	--	--

A

5

4

3

2

D

C

B

A