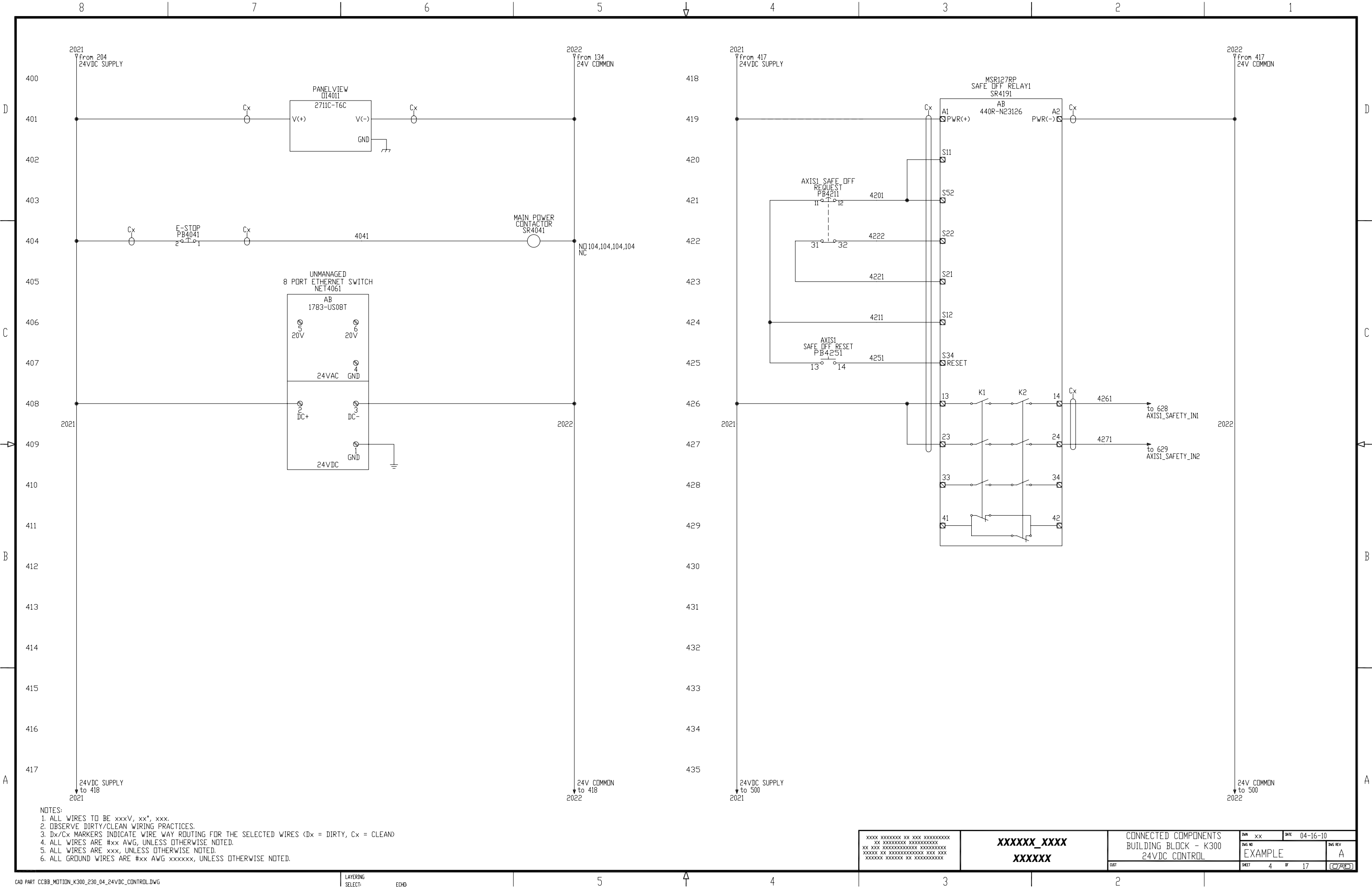


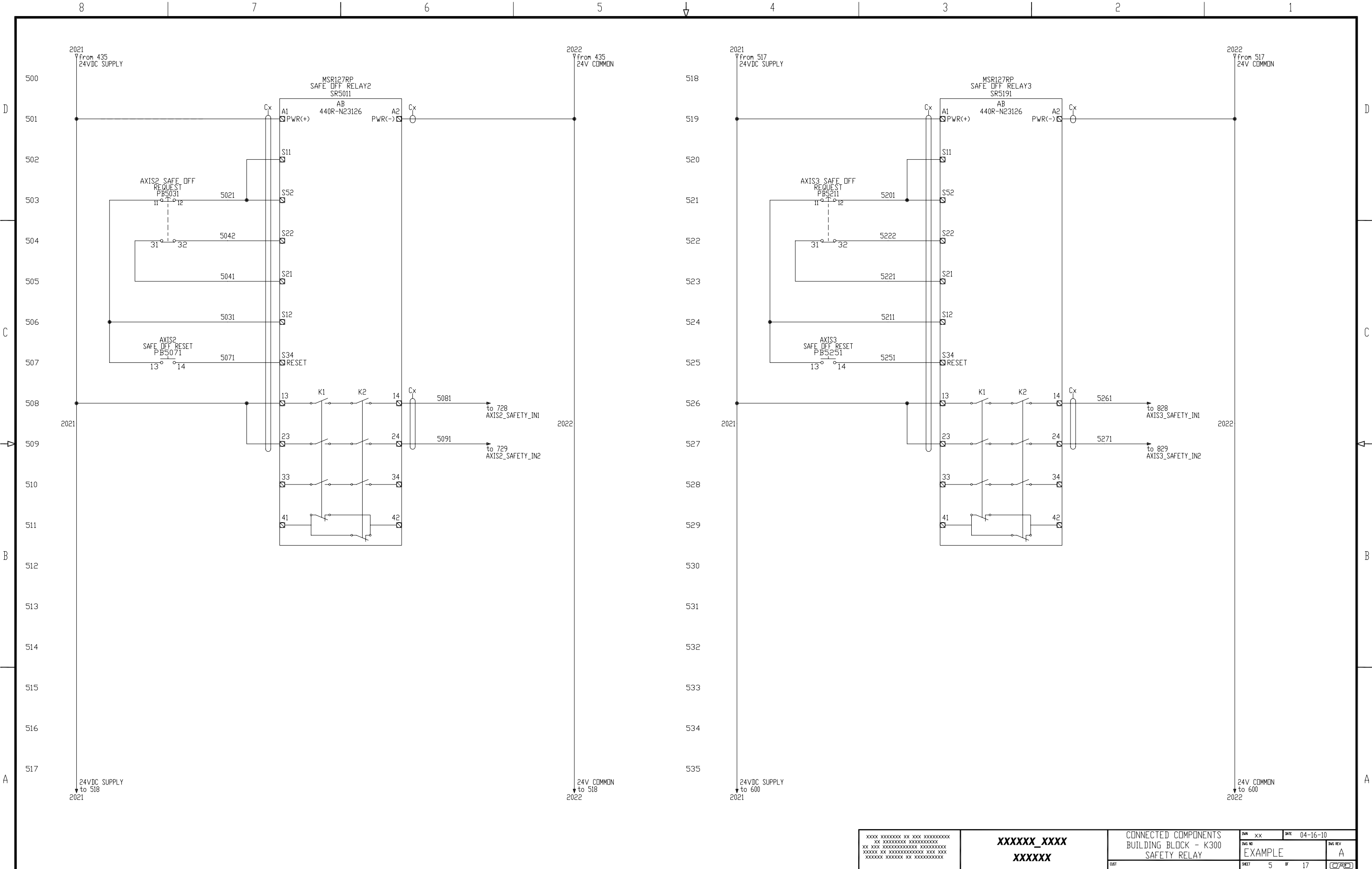
- NOTES:
1. ALL WIRES TO BE xxxV, xx*, xxx.
 2. OBSERVE DIRTY/CLEAN WIRING PRACTICES.
 3. Dx/Cx MARKERS INDICATE WIRE WAY ROUTING FOR THE SELECTED WIRES (Dx = DIRTY, Cx = CLEAN)
 4. ALL WIRES ARE #xx AWG, UNLESS OTHERWISE NOTED.
 5. ALL WIRES ARE xxx, UNLESS OTHERWISE NOTED.
 6. ALL GROUND WIRES ARE #xx AWG xxxxxx, UNLESS OTHERWISE NOTED.

| | | |
|----------------------|---|--|
| XXXXX_XXXX XXXXXX | CONNECTED COMPONENTS BUILDING BLOCK - K300 230VAC CONTROL | DWG: xx DATE: 04-16-10 Dwg ID: EXAMPLE Dwg REV: A |
| | SHEET: 2 OF 17 | (C/R) |

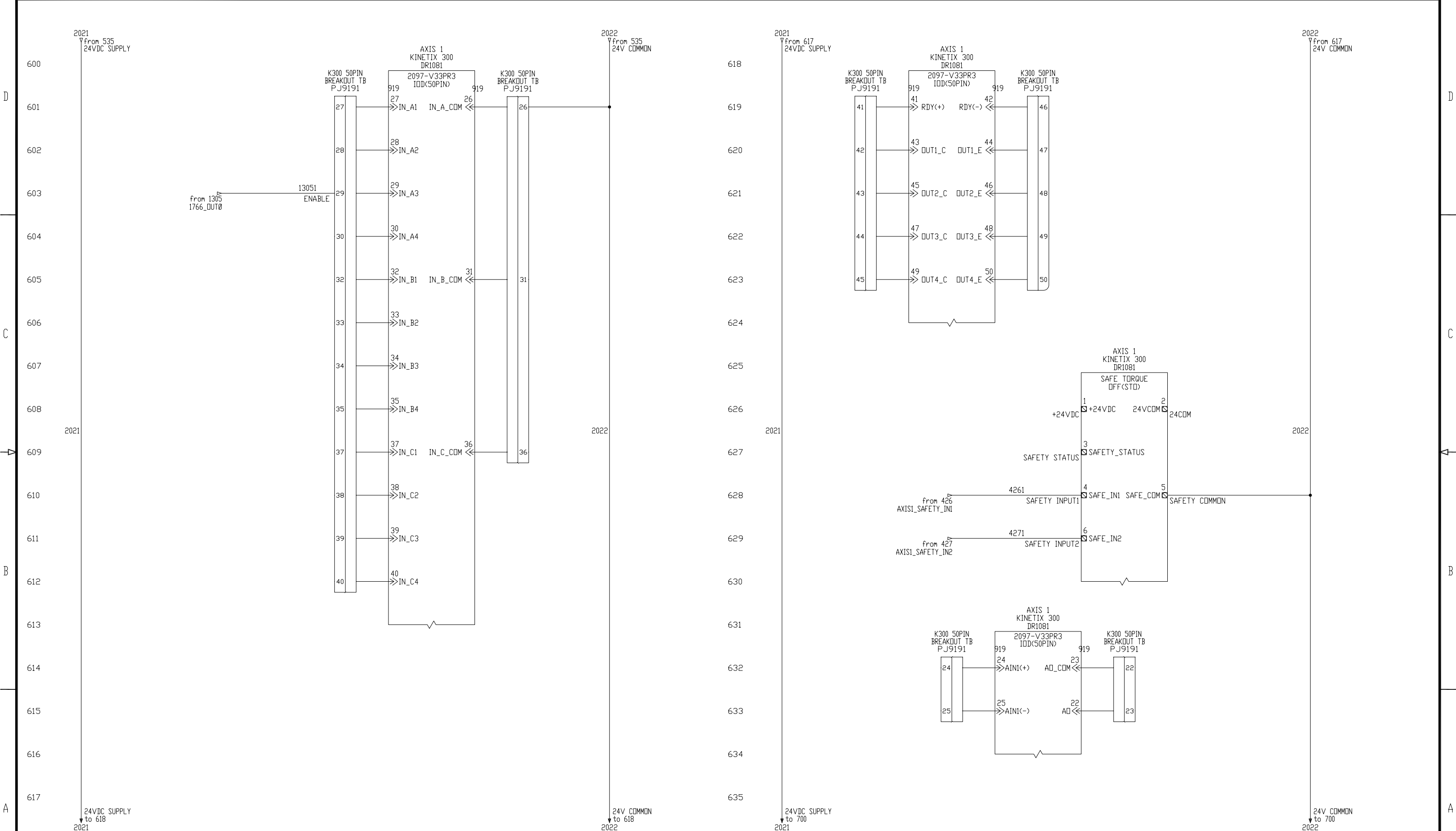


NOTES:
 1. ALL WIRES TO BE xxxV, xx*, xxx.
 2. OBSERVE DIRTY/CLEAN WIRING PRACTICES.
 3. Dx/Cx MARKERS INDICATE WIRE WAY ROUTING FOR THE SELECTED WIRES (Dx = DIRTY, Cx = CLEAN)
 4. ALL WIRES ARE #xx AWG, UNLESS OTHERWISE NOTED.
 5. ALL WIRES ARE xxx, UNLESS OTHERWISE NOTED.
 6. ALL GROUND WIRES ARE #xx AWG xxxxxx, UNLESS OTHERWISE NOTED.

| | | | | |
|----------------------|--|-------------------|------------------|--------------|
| XXXXX_XXXX XXXXXX | CONNECTED COMPONENTS BUILDING BLOCK - K300 24VDC CONTROL | DWG NO EXAMPLE | DATE 04-16-10 | DWG REV A |
| DWT 4 | DWT 4 | DWT 17 | DWT 17 | DWT 17 |

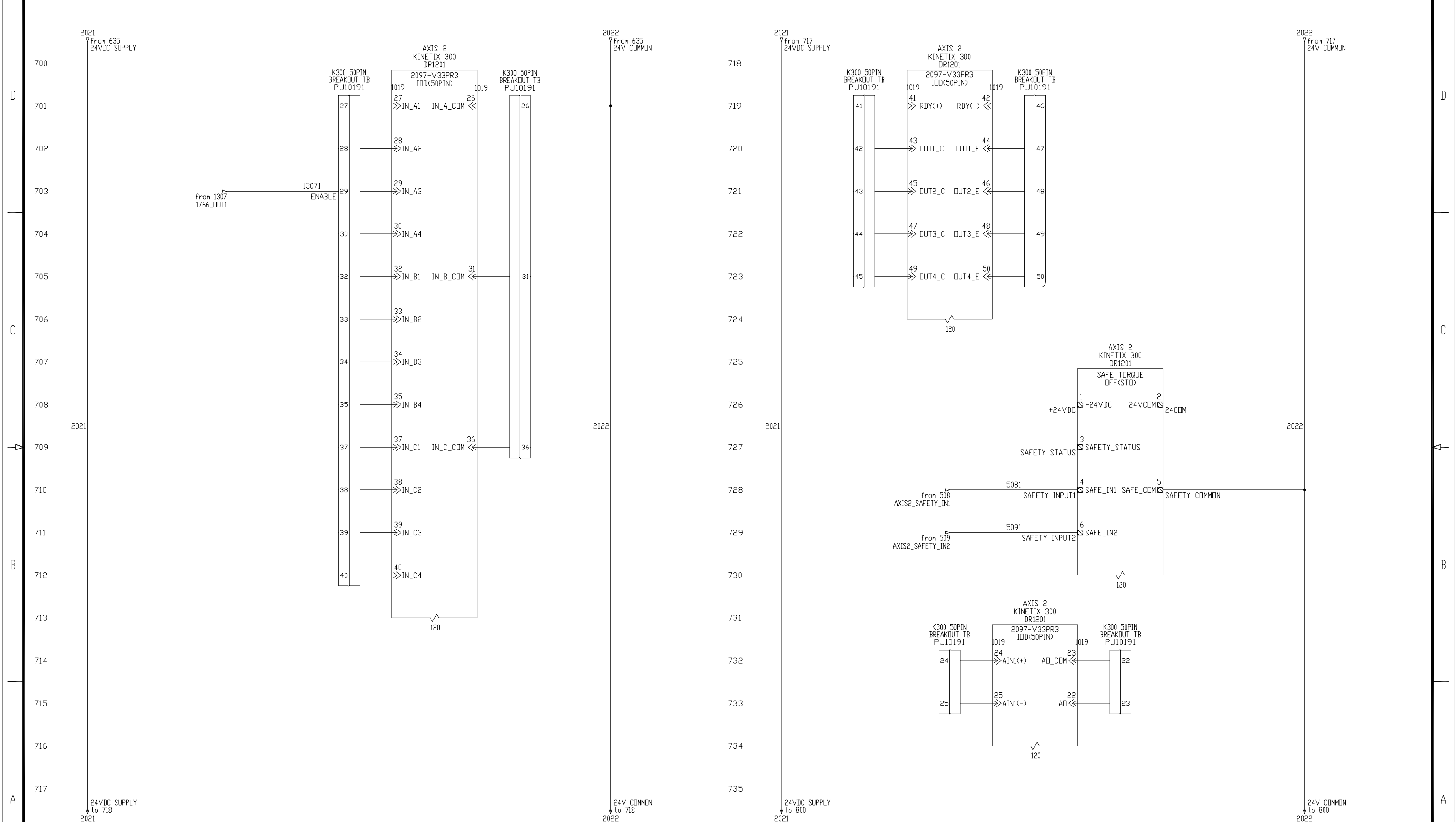


| | | | |
|----------------------|---|--|----------------|
| XXXXX_XXXX XXXXXX | CONNECTED COMPONENTS BUILDING BLOCK - K300 SAFETY RELAY | DWG NO: XX DATE: 04-16-10 DWT: 5 OF 17 | Dwg REV: A |
| | XXXXX XXXXX XX XXX XXXXXXXXXXXX XX XXXXXXXXXXXXXXXXXXXXXXXXXXXX XX XXXXXXXXXXXXXXXXXXXXXXXXXXXX XXXXX XX XXXXXXXXXXXXXXXXXXXX XXXXXX XXXXXX XX XXXXXXXXXXXX | | |



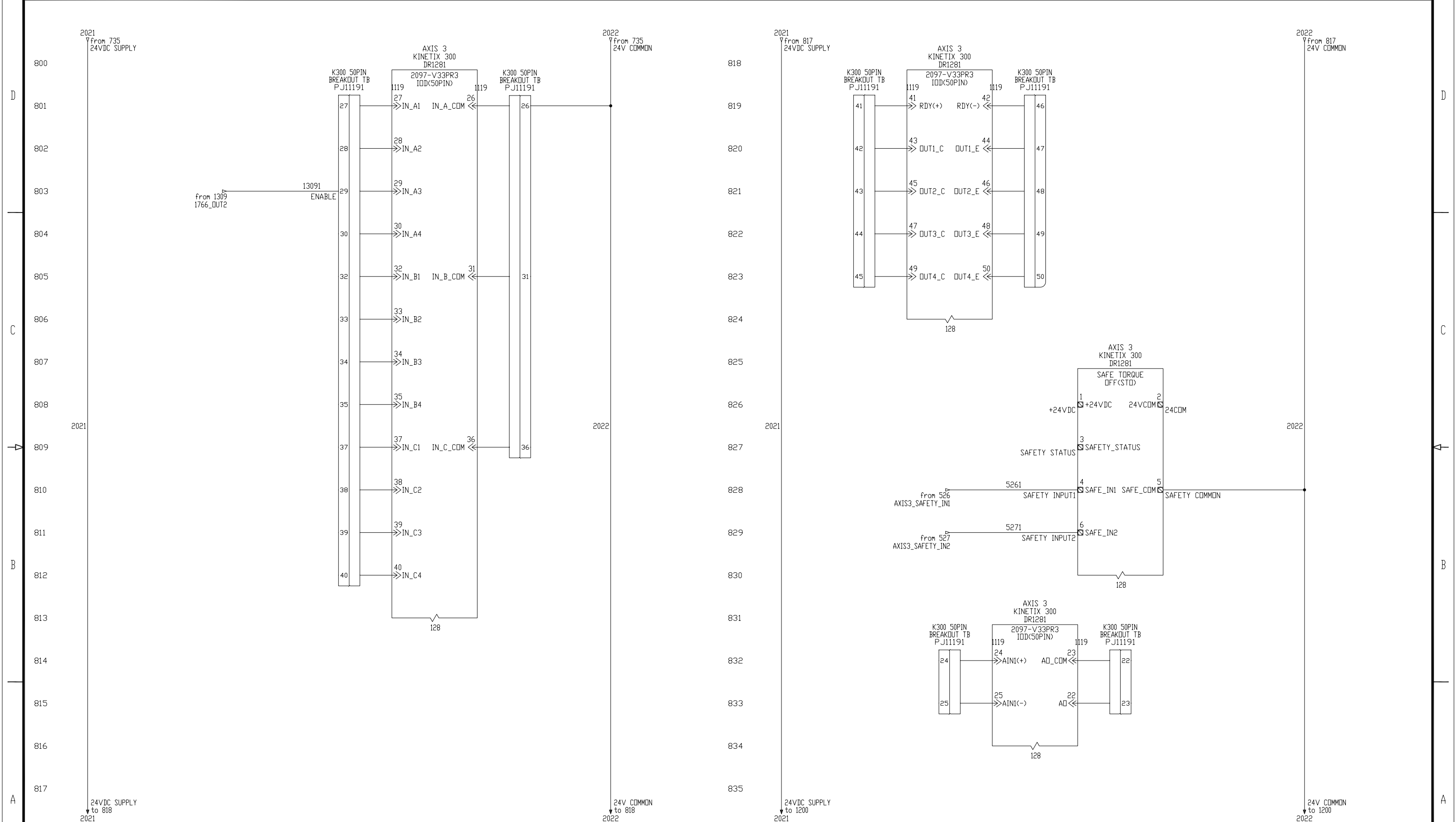
NOTES:
 1. ALL WIRES TO BE xxxV, xx*, xxx.
 2. OBSERVE DIRTY/CLEAN WIRING PRACTICES.
 3. Dx/Cx MARKERS INDICATE WIRE WAY ROUTING FOR THE SELECTED WIRES (Dx = DIRTY, Cx = CLEAN)
 4. ALL WIRES ARE #xx AWG, UNLESS OTHERWISE NOTED.
 5. ALL WIRES ARE xxx, UNLESS OTHERWISE NOTED.

| | | | | | |
|--|-------------------------------------|---|--------------------------|------------------|---------------------|
| XXXX XXXXXXXX XX XXX XXXXXXXXXX XX XXX XXXXXXXXXX XXXXXXXXXX XXXXXX XX XXXXXXXXXX XXX XXX XXXXXX XXXXXX XX XXXXXXXXXX | XXXXXX_XXXX XXXXXX | CONNECTED COMPONENTS BUILDING BLOCK - K300 DI/DO CONNECTOR AXIS 1 | DWG NO EXAMPLE | DATE 04-16-10 | DWG REV A |
| SHEET 6 OF 17 | | | | | |



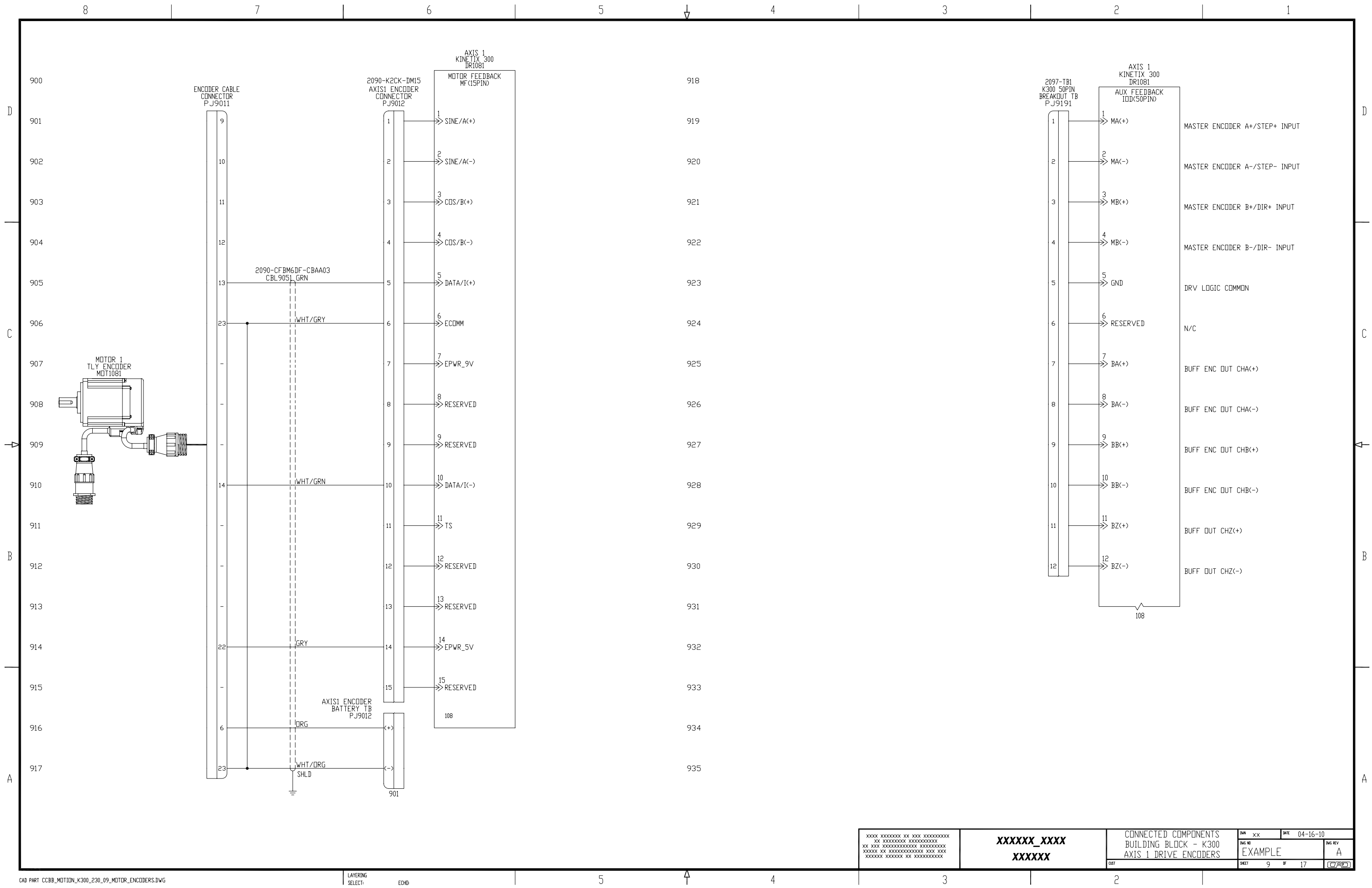
NOTES:
 1. ALL WIRES TO BE xxxV, xx*, xxx.
 2. OBSERVE DIRTY/CLEAN WIRING PRACTICES.
 3. Dx/Cx MARKERS INDICATE WIRE WAY ROUTING FOR THE SELECTED WIRES (Dx = DIRTY, Cx = CLEAN)
 4. ALL WIRES ARE #xx AWG, UNLESS OTHERWISE NOTED.
 5. ALL WIRES ARE xxx, UNLESS OTHERWISE NOTED.
 6. ALL GROUND WIRES ARE #xx AWG xxxxxx, UNLESS OTHERWISE NOTED.

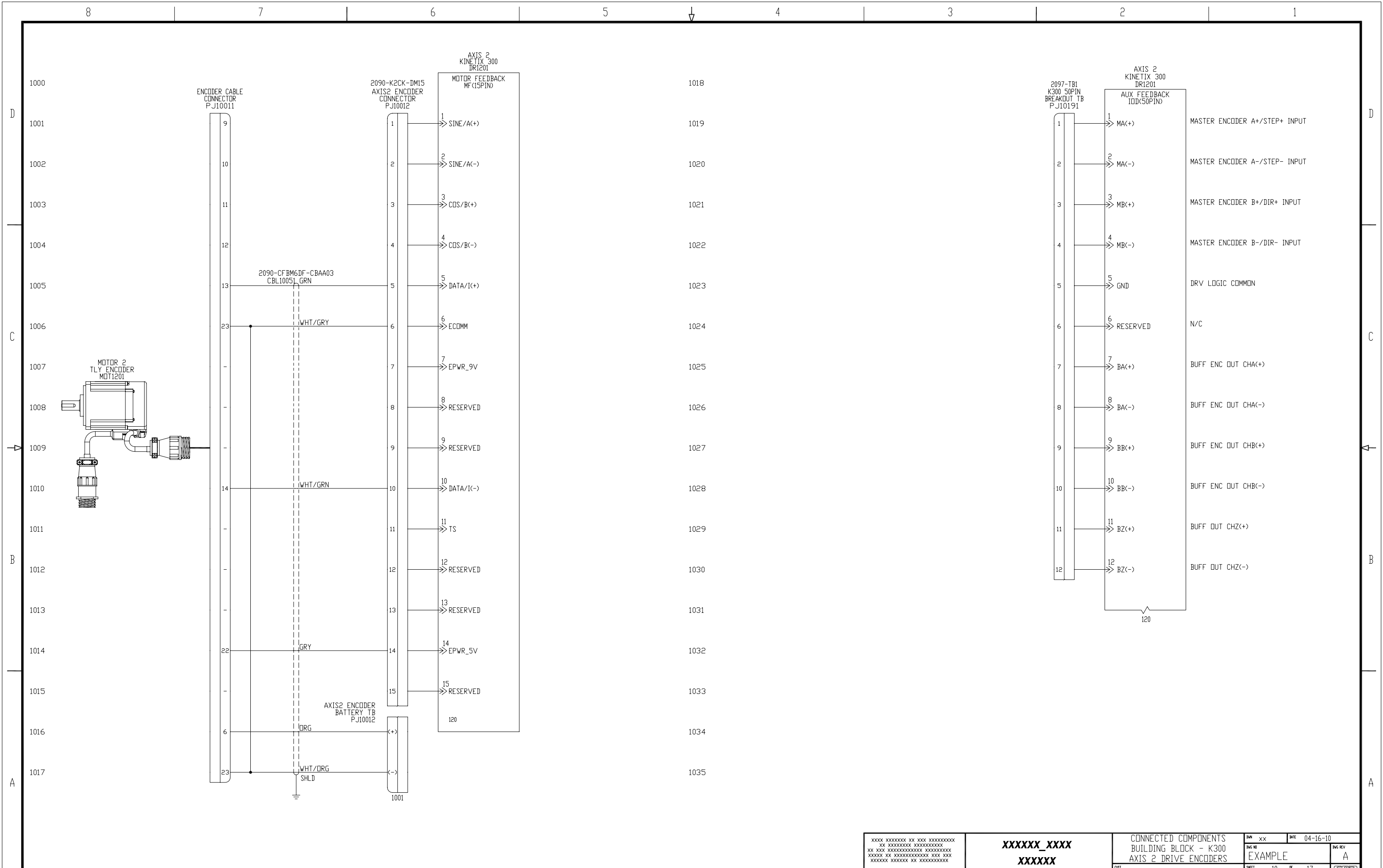
| | | | | | |
|--|-------------------------------------|---|--------------------------|------------------|---------------------|
| XXXX XXXXXXXX XX XXX XXXXXXXXXX XX XXX XXXXXXXXXXXXXXXXXXXXXXXX XXXXXX XX XXXXXXXXXXXXXXXXXXXX XXXXXXXX XXXXXX XXXXXXXXXXXXXXXX | XXXXXX_XXXX XXXXXX | CONNECTED COMPONENTS BUILDING BLOCK - K300 DI/DO CONNECTOR AXIS 2 | DWG NO EXAMPLE | DATE 04-16-10 | DWG REV A |
| | | SHEET 7 OF 17 | | [CPC] | |



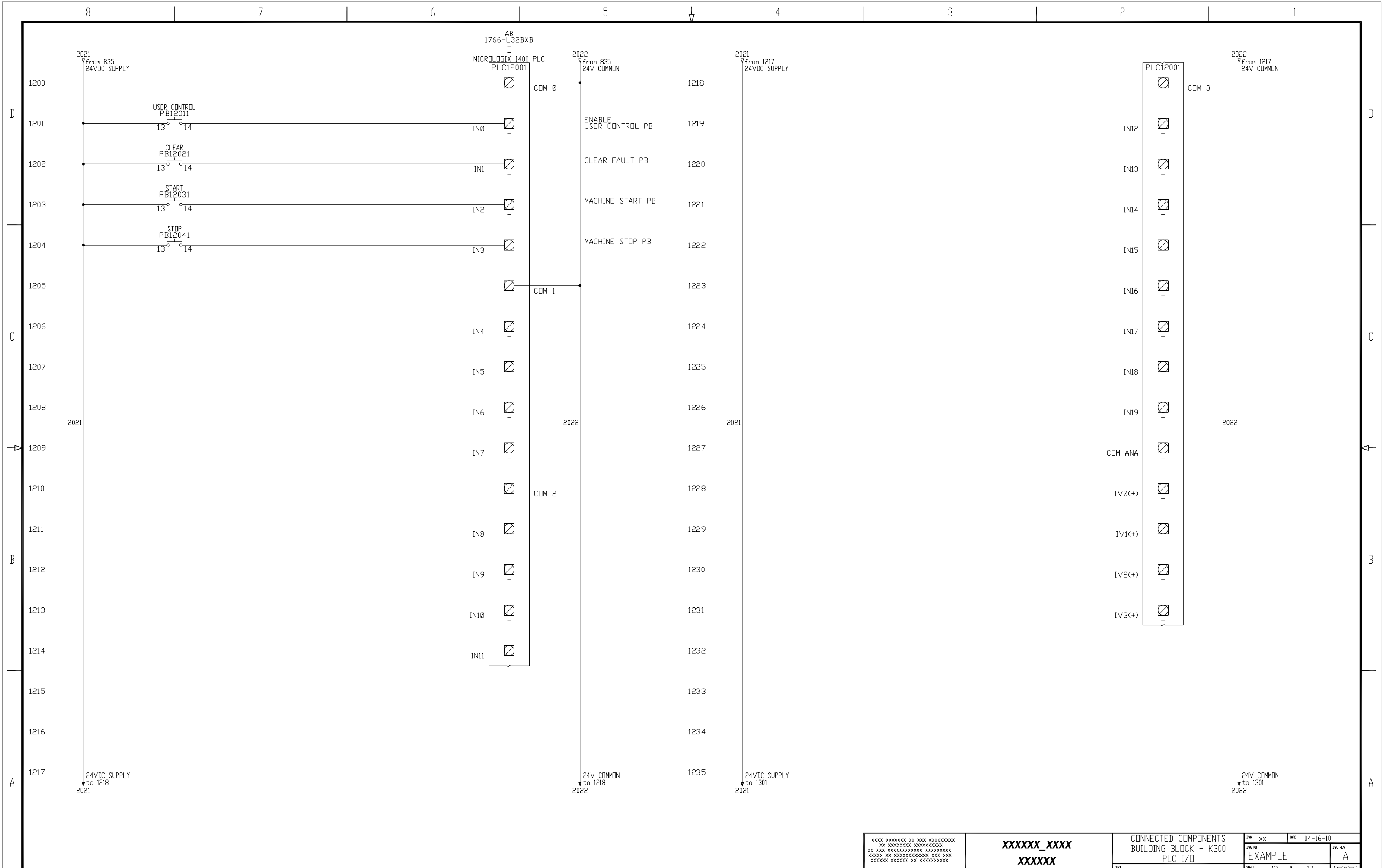
NOTES:
 1. ALL WIRES TO BE xxxV, xx*, xxx.
 2. OBSERVE DIRTY/CLEAN WIRING PRACTICES.
 3. Dx/Cx MARKERS INDICATE WIRE WAY ROUTING FOR THE SELECTED WIRES (Dx = DIRTY, Cx = CLEAN)
 4. ALL WIRES ARE #xx AWG, UNLESS OTHERWISE NOTED.
 5. ALL WIRES ARE xxx, UNLESS OTHERWISE NOTED.
 6. ALL GROUND WIRES ARE #xx AWG xxxxxx, UNLESS OTHERWISE NOTED.

| | | | | | |
|--|-------------------------------------|---|--------------------------|------------------|---------------------|
| XXXX XXXXXXXX XX XXX XXXXXXXXXX XX XXX XXXXXXXXXX XXXXXXXXXX XXXXXX XX XXXXXXXXXX XXX XXX XXXXXX XXXXXX XX XXXXXXXXXX | XXXXXX_XXXX XXXXXX | CONNECTED COMPONENTS BUILDING BLOCK - K300 DI/DD CONNECTOR AXIS 3 | DWG NO EXAMPLE | DATE 04-16-10 | DWG REV A |
| | | SHEET 8 OF 17 | | [CPC] | |

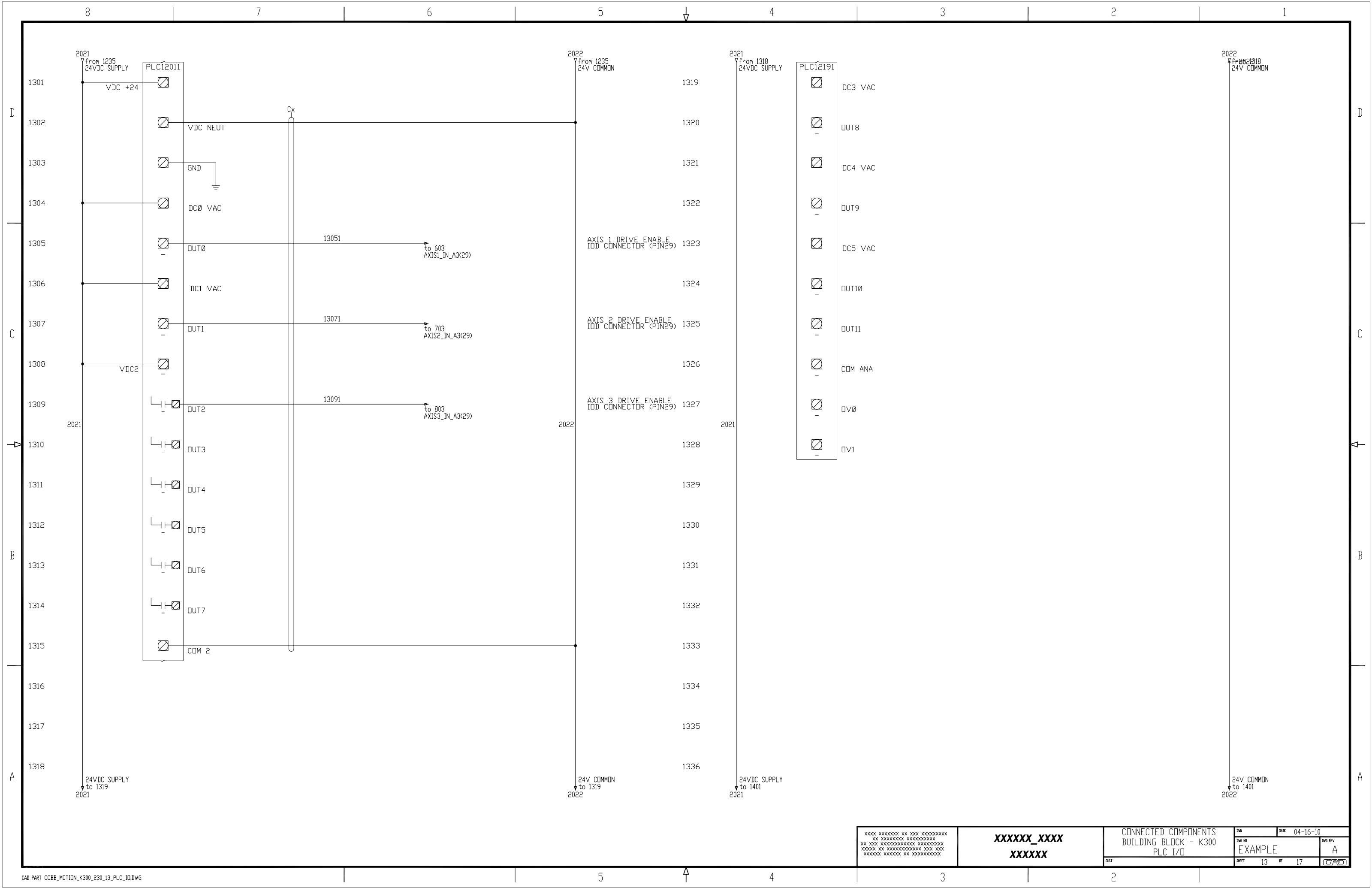




| | | | | | |
|--|-------------------------------------|--|-------------------|---------------|--------------|
| XXXX XXXXXXXX XX XXX XXXXXXXXXXXX XX XXXXXXXXXXXX XXXXXXXXXXXX XXXXXX XX XXXXXXXXXXXXXXXX XXX XXX XXXXXXXX XXXXXXXX XX XXXXXXXXXXXX | XXXXXX_XXXX XXXXXX | CONNECTED COMPONENTS BUILDING BLOCK - K300 AXIS 2 DRIVE ENCODERS | DWG NO EXAMPLE | DATE 04-16-10 | DWG REV A |
| | | | SHEET 10 OF 17 | | |



| | | | | |
|--|-------------------------------------|--|---|----------------|
| XXXX XXXXXXXX XX XXX XXXXXXXXXXXX XX XXXXXXXXXXXX XXXXXXXXXXXX XX XXX XXXXXXXXXXXX XXXXXXXXXXXX XXXXXX XX XXXXXXXXXXXX XXX XXX XXXXXXXX XXXXXXXX XX XXXXXXXXXXXX | XXXXXX_XXXX XXXXXX | CONNECTED COMPONENTS BUILDING BLOCK - K300 PLC I/O | DWG XX DATE 04-16-10 DWG REV EXAMPLE A | SHEET 12 OF 17 |
|--|-------------------------------------|--|---|----------------|



| | | | | |
|---|-------------------------------------|--|--------------------------|--------------------------------------|
| XXXX XXXXXXXX XX XXX XXXXXXXXXXXX XX XXXXXXXXXXXX XXXXXXXXXXXX XX XXX XXXXXXXXXXXX XXXXXXXXXXXX XXXXX XX XXXXXXXXXXXX XXX XXX XXXXXX XXXXXX XX XXXXXXXXXXXX | XXXXXX_XXXX XXXXXX | CONNECTED COMPONENTS BUILDING BLOCK - K300 PLC I/O | DWG NO EXAMPLE | DATE 04-16-10 DWG REV A |
| | | SHEET 13 OF 17 | DWT 13 | OF 17 |

8

7

6

5

4

3

2

1

2021
from 1336
24VDC SUPPLY

2022
from 1336
24V COMMON

2021
from 1418
24VDC SUPPLY

2022
from 1418
24V COMMON

1401

1419

D

1402

1420

D

1403

1421

1404

1422

1405

1423

1406

1424

C

1407

1425

C

1408

1426

1409

THIS SPACE INTENTIONALLY LEFT BLANK

1427

THIS SPACE INTENTIONALLY LEFT BLANK

2022

2021

2022

2021

B

1410

1428

B

1411

1429

1412

1430

A

1413

1431

A

1414

1432

1415

1433

1416

1434

1417

1435

1418

24VDC SUPPLY
to 1419
2021

24V COMMON
to 1419
2022

1436

XXXX XXXXXX XX XXX XXXXXXXXXX
XX XXXXXXXXXX XXXXXXXXXX
XX XXX XXXXXXXXXX XXXXXXXXXX
XXXXXX XX XXXXXXXXXX XXX XXX
XXXXXX XXXXXX XX XXXXXXXXXX

XXXXXX_XXXX
XXXXXX

CONNECTED COMPONENTS
BUILDING BLOCK - K300
PLC I/O

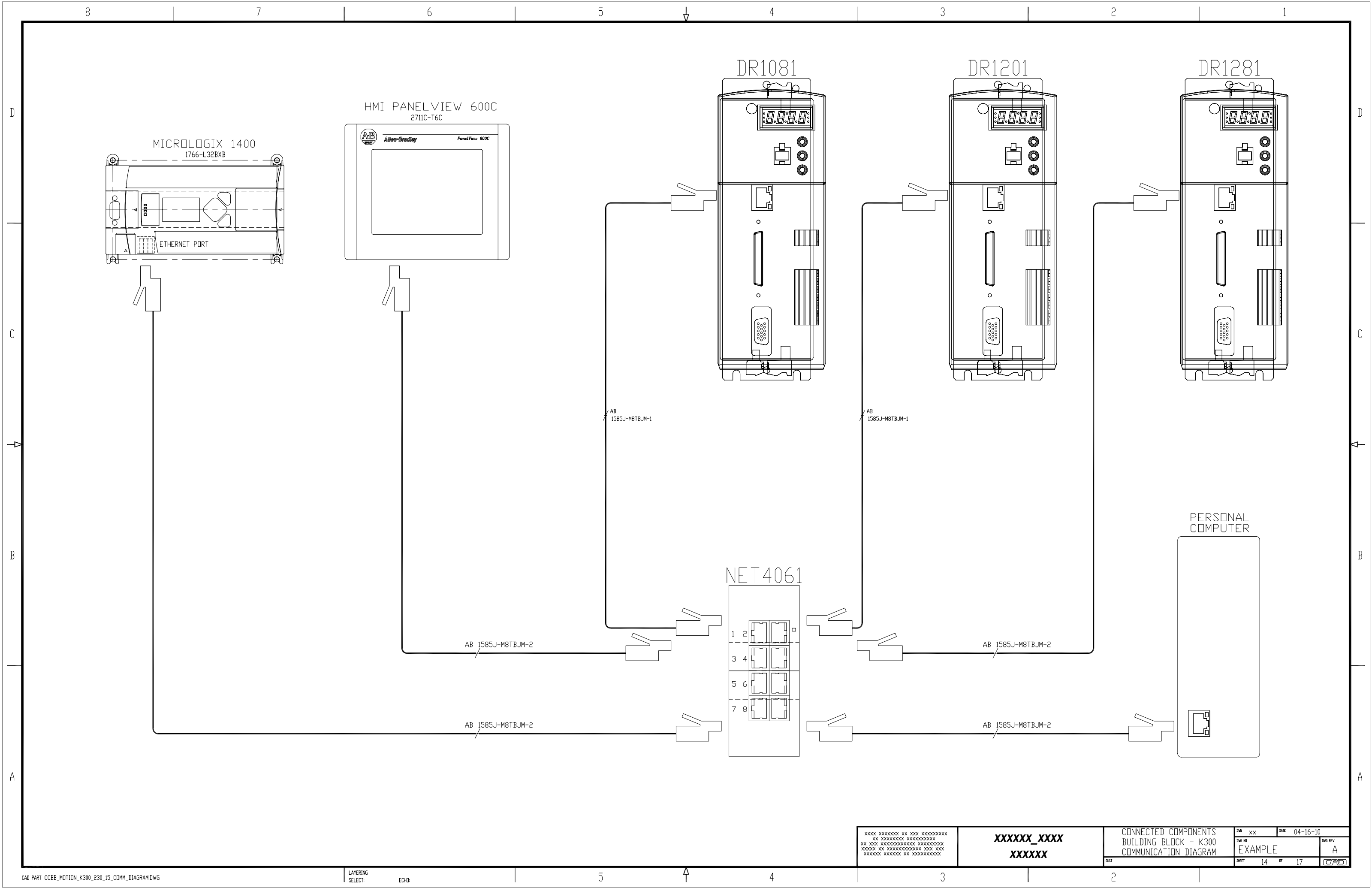
| | | |
|---------|----------|----------|
| DWG NO | DATE | DWG REV |
| EXAMPLE | 04-16-10 | A |
| SHEET | OF | DATE |
| 14 | 17 | 04/16/10 |

5

4

3

2

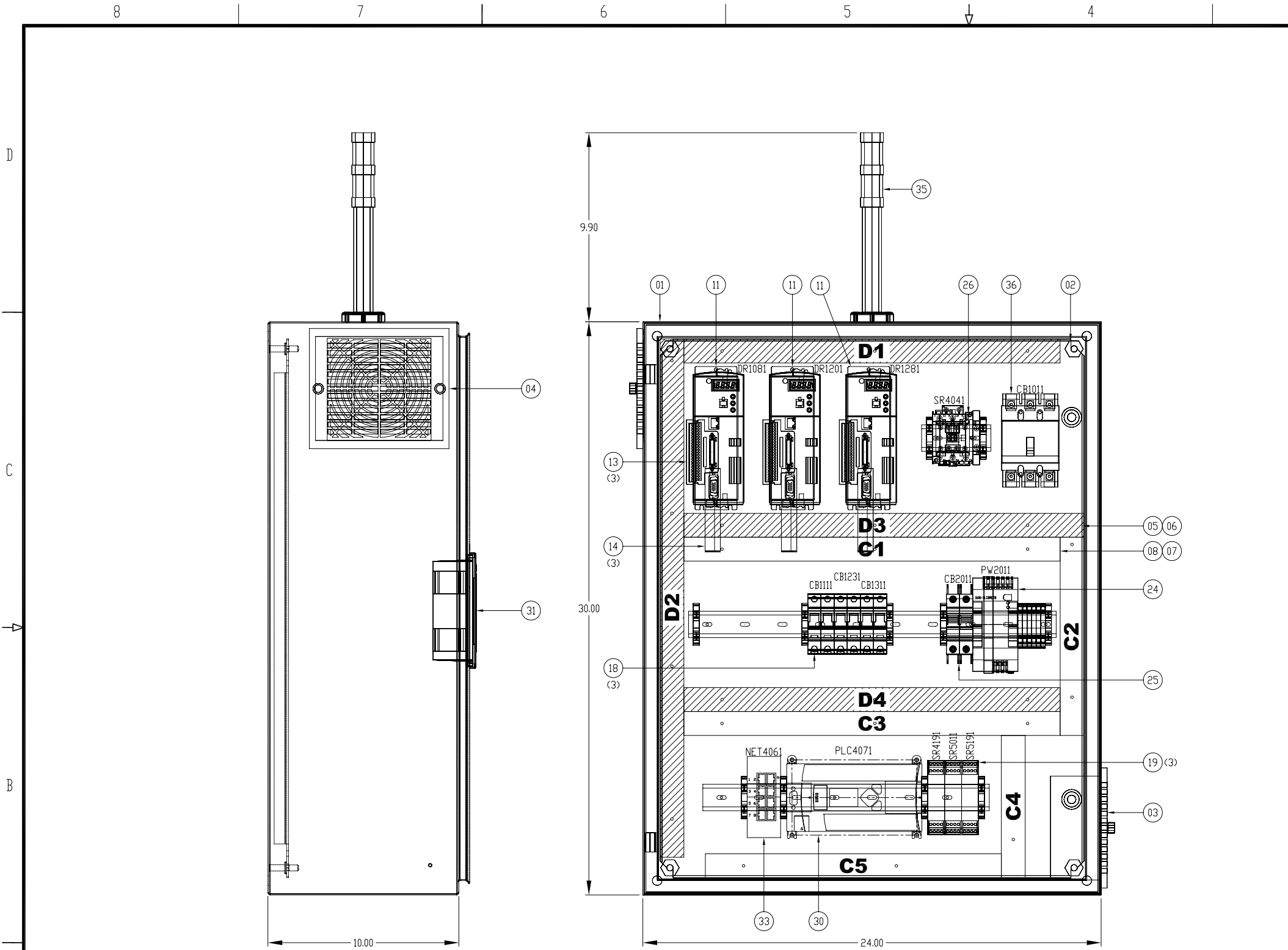


XXXX XXXXXXXX XX XXX XXXXXXXXXXXX
 XX XXXXXXXXXXXX XXXXXXXXXXXX
 XXXXX XX XXXXXXXXXXXX XXX XXX
 XXXXXXX XXXXXXX XX XXXXXXXXXXXX

XXXXXX_XXXX
 XXXXXX

CONNECTED COMPONENTS
 BUILDING BLOCK - K300
 COMMUNICATION DIAGRAM

| | | |
|---------|----------|----------|
| DWG NO | DATE | DWG REV |
| EXAMPLE | 04-16-10 | A |
| SHEET | OF | DATE |
| 14 | 17 | 04/16/10 |



| ITEM | QTY | DESCRIPTION | MFG | CATALOG |
|--|-----|---|---------|---------------------|
| 01 | 1 | NEMA1 ENCLOSURE 30"x24"x10" | HOFFMAN | CSD302410 |
| 02 | 1 | PANEL FOR ENCLOSURE 21"x22.5" | HOFFMAN | CP3024 |
| 03 | 1 | FAN KIT 115VAC WITH FILTER | HOFFMAN | TFF41 |
| 04 | 1 | EXHAUST GRILL WITH FILTER | HOFFMAN | TEP4 |
| 05 | - | PANDUIT WIRE DUCT, 1"x4" GRAY | PANDUIT | F1X4LG6 |
| 06 | - | PANDUIT WIRE DUCT COVER, 1" GRAY | PANDUIT | C1LG6 |
| 07 | - | PANDUIT WIRE DUCT, 1"x4" WHITE | PANDUIT | F1X4WH6 |
| 08 | - | PANDUIT WIRE DUCT COVER, 1" WHITE | PANDUIT | C1WH6 |
| 09 | - | 35MM DIN RAIL | AB | 199-DR1 |
| 10 | 11 | END ANCHOR USED W/STANDARD 35MM DIN | AB | 1492-EAJ35 |
| SIMPLE INDEXING MOTION CONTROL | | | | |
| 11 | 3 | KINETIX 300 DRIVE, 1PH, 500W, 120/240V, ENET | AB | 2097-V33PR3 |
| 12 | 3 | SERVO MOTOR TLY SERIES, 230VAC, 0.35kW, ABSOLUTE ENCODER | AB | TLY-A220P-BJ62AA |
| 13 | 3 | CONNECTOR (BREAKOUT), DRIVE I/O, 50PIN MALE | AB | 2097-TB1 |
| 14 | 3 | CONNECTOR (BREAKOUT), LOW PROFILE, FEEDBACK, 15PIN MALE | AB | 2090-K2CK-DM15 |
| 15 | 3 | CABLE, FEEDBACK, CIRCULAR CONNECTOR, FLYING LEAD, 3M | AB | 2090-CFBM6DF-CBAA03 |
| 16 | 3 | CABLE, STANDARD, MOTOR FEEDBACK .22AWG, 03M | AB | 2090-CPWM6DF-16AA03 |
| 17 | 3 | CABLE, STANDARD, MOTOR POWER .16AWG, 03M | AB | 2090-DANPT-16S03 |
| 18 | 3 | CIRCUIT BREAKER, SUPPLEMENTARY PROTECTION 2POLE, 6AMP | AB | 1492-SP2C060 |
| SIMPLE MOTION SAFETY (SAFEOFF) COMPONENTS (1 SET/PER DRIVE AXIS) | | | | |
| 19 | 1 | MONITORED SAFETY RELAY MSR127 24VAC/DC 1N.C. AUX OUTPUT | AB | 440R-N23135 |
| 20 | 1 | 800F NON-ILLUM MUSHROOM OPERATOR, TWIST TO RELEASE, 40MM | AB | 800FP-MT44 |
| 21 | 1 | 800F PLASTIC MOUNTING LATCH | AB | 800F-ALP |
| 22 | 2 | 800F PB NO LATCH, SCREW CONTACT BLOCK 1N.C. | AB | 800F-X01 |
| 23 | 1 | 800F PUSHBUTTON FLUSH BLUE, PLASTIC LATCH MOUNT, 1N.O. | AB | 800FP-F6PX10 |
| CONTROL CIRCUIT COMPONENTS | | | | |
| 24 | 1 | POWER SUPPLY, 120/240VAC INPUT, 24-48VDC, 8A, 192W OUTPUT | AB | 1606-XLSDNET8 |
| 25 | 1 | UL489/CSA 22.2 NO 5.1 BREAKER, 2POLE, 6AMP, 480Y/277VAC | AB | 1489-A2C060 |
| ESTOP AND POWER CONTROL COMPONENTS | | | | |
| 26 | 1 | CONTACTOR SAFETY MCS 100S-C, 24V DC, 43A, SINGLE PACK | AB | 100S-C43ZJ14BC |
| 27 | 1 | 800F NON-ILLUM MUSHROOM OPERATOR, TWIST TO RELEASE, 40MM | AB | 800FP-MT44 |
| 28 | 1 | 800F PLASTIC MOUNTING LATCH | AB | 800F-ALP |
| 29 | 2 | 800F PB NO LATCH, SCREW CONTACT BLOCK 1N.C. | AB | 800F-X01 |
| CONTROL AND VISUALIZATION EQUIPMENT | | | | |
| 30 | 1 | MICROLOGIX 1400, 24VDC POWER | AB | 1766-L32BxB |
| 31 | 1 | 6" COLOR (TRANSMISSIVE CSTN) TOUCHSCREEN | AB | 2711C-T6C |
| 32 | 2 | ETHERNET CABLE 8-CONDUCTOR, RJ45 STRAIGHT MALE, TPE 2m | AB | 1585J-M8TBJM-2 |
| 33 | 1 | ETHERNET SWITCH, STRATIX 2000, 8 COPPER PORTS, UNMANAGED | AB | 1783-US08T |
| 34 | 1 | 800F PUSHBUTTON FLUSH GREEN, PLASTIC LATCH MOUNT, 1N.O. | AB | 800FP-F3PX10 |
| 35 | 1 | STACKLIGHT 30mm S.M. 24VAC/DC GRN, RED LED | AB | 885D-P25SC20G24Y3Y4 |
| 230VAC, 3POLE CB. DISCONNECT POWER OPTION | | | | |
| 36 | 1 | IEC MOLDED CASE C.B., 100A, G-FRAME, RATED 20A | AB | 140U-G2C3-C20 |
| 37 | 1 | ROTARY, VARIABLE-DEPTH OPERATING MECHANISM | AB | 140U-H-RVM12R |
| PROGRAMMING SOFTWARE | | | | |
| 38 | 1 | RSLOGIX MICRO STARTER (ENGLISH) CD-ROM | AB | 9324-RLM0100ENE |

NOTES:
 1. WIREWAYS MARKED Cx/Dx INDICATE CLEAN/DIRTY SIGNAL/POWER
 2. FOR FURTHER INFORMATION ON SYSTEM DESIGN FOR CONTROL OF ELECTRICAL NOISE SEE ROCKWELL PUBLICATION #GMC RM001-EN-P

| | | | | | |
|--|-------------------------------------|---|--------------------------|------------------|---------------------|
| XXXX XXXXXXXX XX XXX XXXXXXXXXX XX XXXXXXXXXXXXXXXXXXXXXXXX XXXXXX XX XXXXXXXXXXXXXXXX XXX XXX XXXXXXXX XXXXXXXX XX XXXXXXXXXXXXXXX | XXXXXX_XXXX XXXXXX | CONNECTED COMPONENTS BUILDING BLOCK - K300 PANEL LAYOUT | DWG NO EXAMPLE | DATE 04-16-10 | DWG REV A |
| | | | SHEET 16 | OF 17 | |

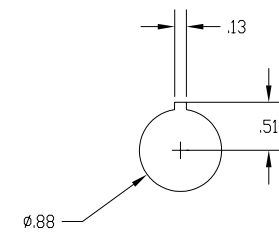
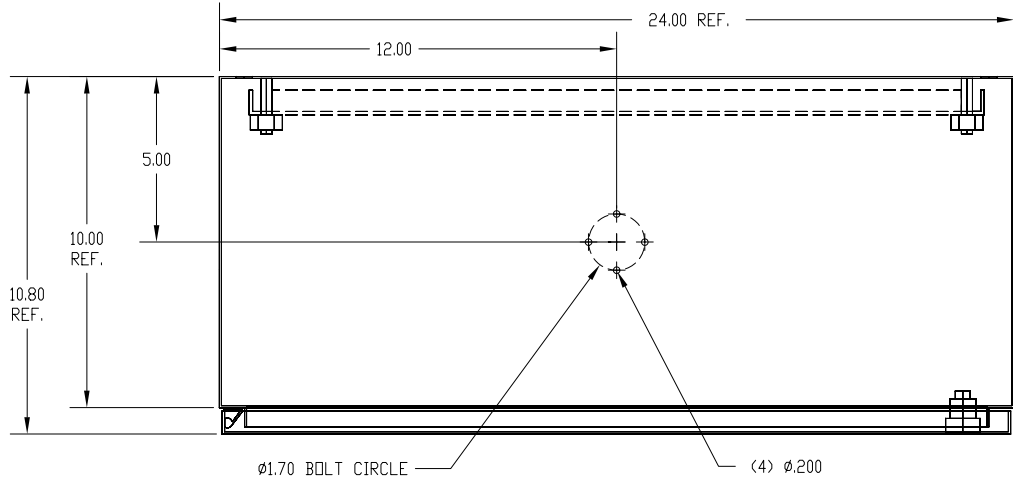
8 7 6 5 4 3 2 1

D

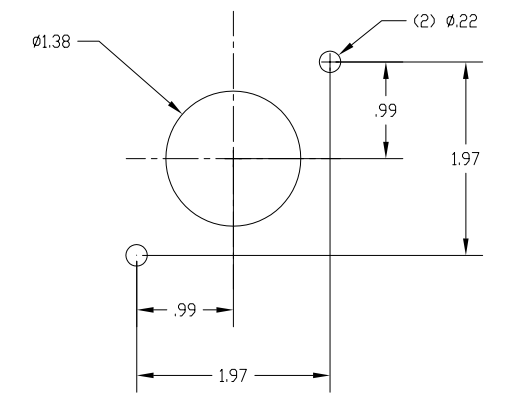
C

B

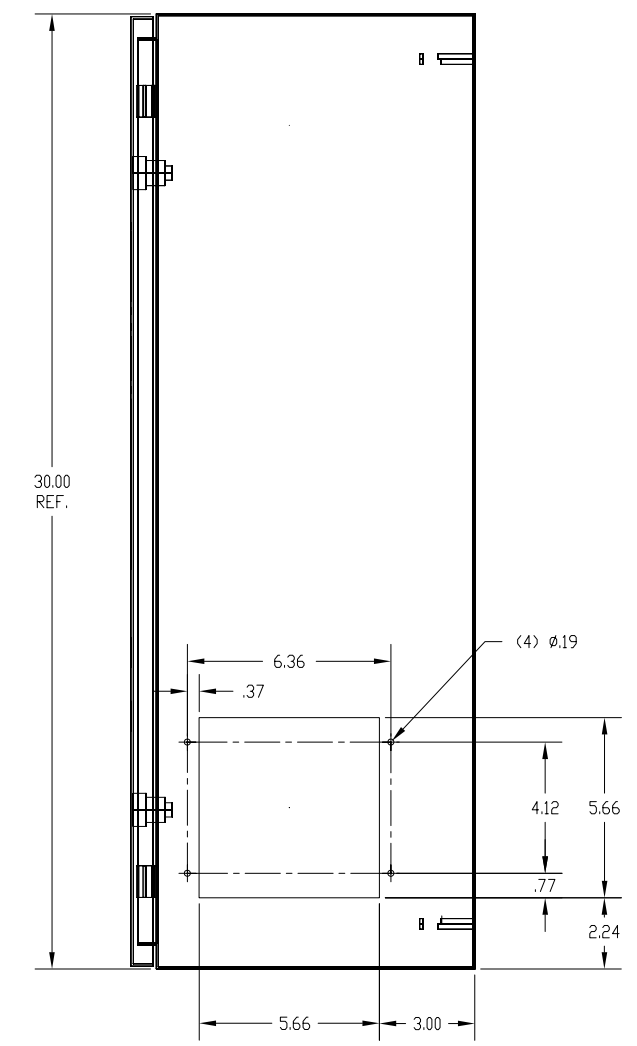
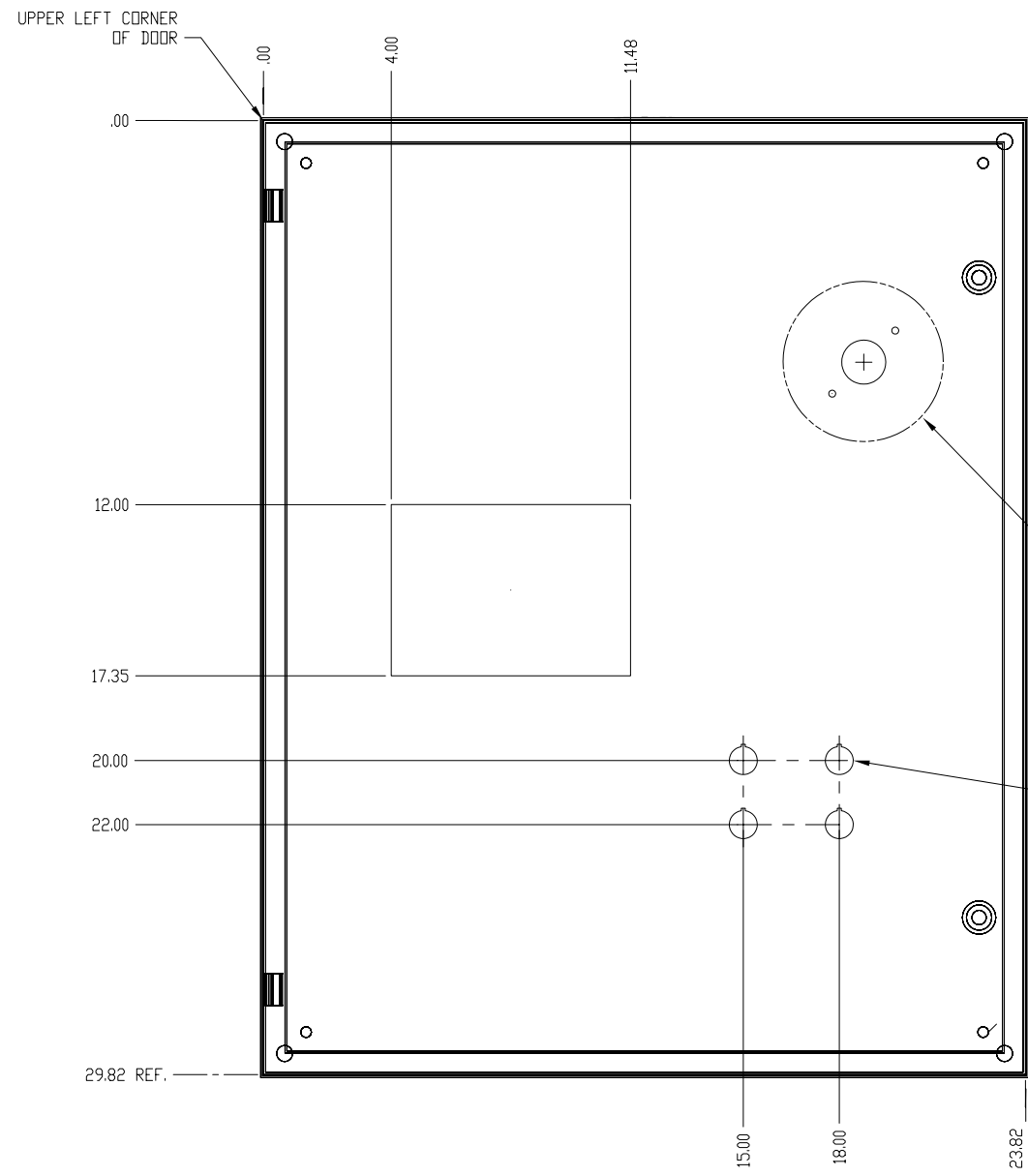
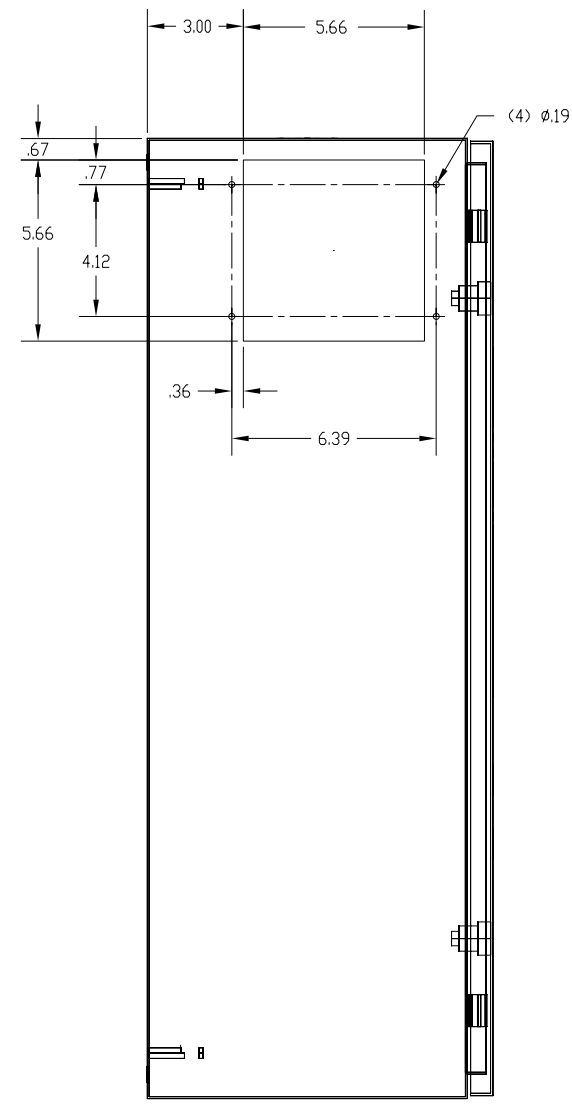
A



DETAIL-B



DETAIL-A



DOOR MODIFICATION

| | | | |
|----------|------------|------------------------|-------------------|
| -01 | 1 | HOFFMAN PART CSD302410 | ANSI 61 GRAY |
| PART NO. | CHG. CHAR. | MATERIAL | SURFACE TREATMENT |

LAYERING SELECT: ECHD

5 4

| | | | | |
|---|-----------------------|--|--|--------------|
| XXXX XXXXXXXX XX XXX XXXXXXXXXXXX XX XXXXXXXXXXXXXXXXXXXXXXXXXXXX XXXXXX XX XXXXXXXXXXXXXXXXXXXX XXXXXXXX XXXXXXXXXXXXXXXXXXXX | XXXXXX_XXXX XXXXXX | CONNECTED COMPONENTS BUILDING BLOCK - K300 ENCLOSURE DOOR LAYOUT | DWG NO. XX DATE 04-16-10 EXAMPLE SHEET 17 OF 17 | DWG REV A |
|---|-----------------------|--|--|--------------|

D

C

B

A

3 2

2