

- NOTES:
1. ALL WIRES TO BE xxxV, xx*, xxx.
 2. OBSERVE DIRTY/CLEAN WIRING PRACTICES.
 3. Dx/Cx MARKERS INDICATE WIRE WAY ROUTING FOR THE SELECTED WIRES (Dx = DIRTY, Cx = CLEAN)
 4. ALL WIRES ARE #xx AWG, UNLESS OTHERWISE NOTED.
 5. ALL WIRES ARE xxx, UNLESS OTHERWISE NOTED.
 6. ALL GROUND WIRES ARE #xx AWG xxxxxx, UNLESS OTHERWISE NOTED.

XXXX XXXXXXXX XX XXX XXXXXXXXXXXX XX XXXXXXXXXXXX XXXXXXXXXXXX XX XXX XXXXXXXXXXXX XXXXXXXXXXXX XXXXXX XX XXXXXXXXXXXX XXX XXX XXXXXXX XXXXXXX XX XXXXXXXXXXXX	XXXXXX_XXXX XXXXXX	CONNECTED COMPONENTS POSITION CONTROL VIA HMI DRIVE POWER DISTRIBUTION	DWG: XX DATE: 10-17-08 DWT: 1 OF: XX	Dwg REV: XX XXX
--	-------------------------------------	--	---	--------------------

D

C

B

A

D

C

B

A

1101
Yfrom 135
1102
Yfrom 135
1103
Yfrom 134

1101 1102 1103

to 218
1103
to 218
1102
to 218
1101

THIS SPACE INTENTIONALLY LEFT BLANK

1101
Yfrom 217
1102
Yfrom 217
1103
Yfrom 216

1101 1102 1103

THIS SPACE INTENTIONALLY LEFT BLANK

200
201
202
203
204
205
206
207
208
209
210
211
212
213
214
215
216
217

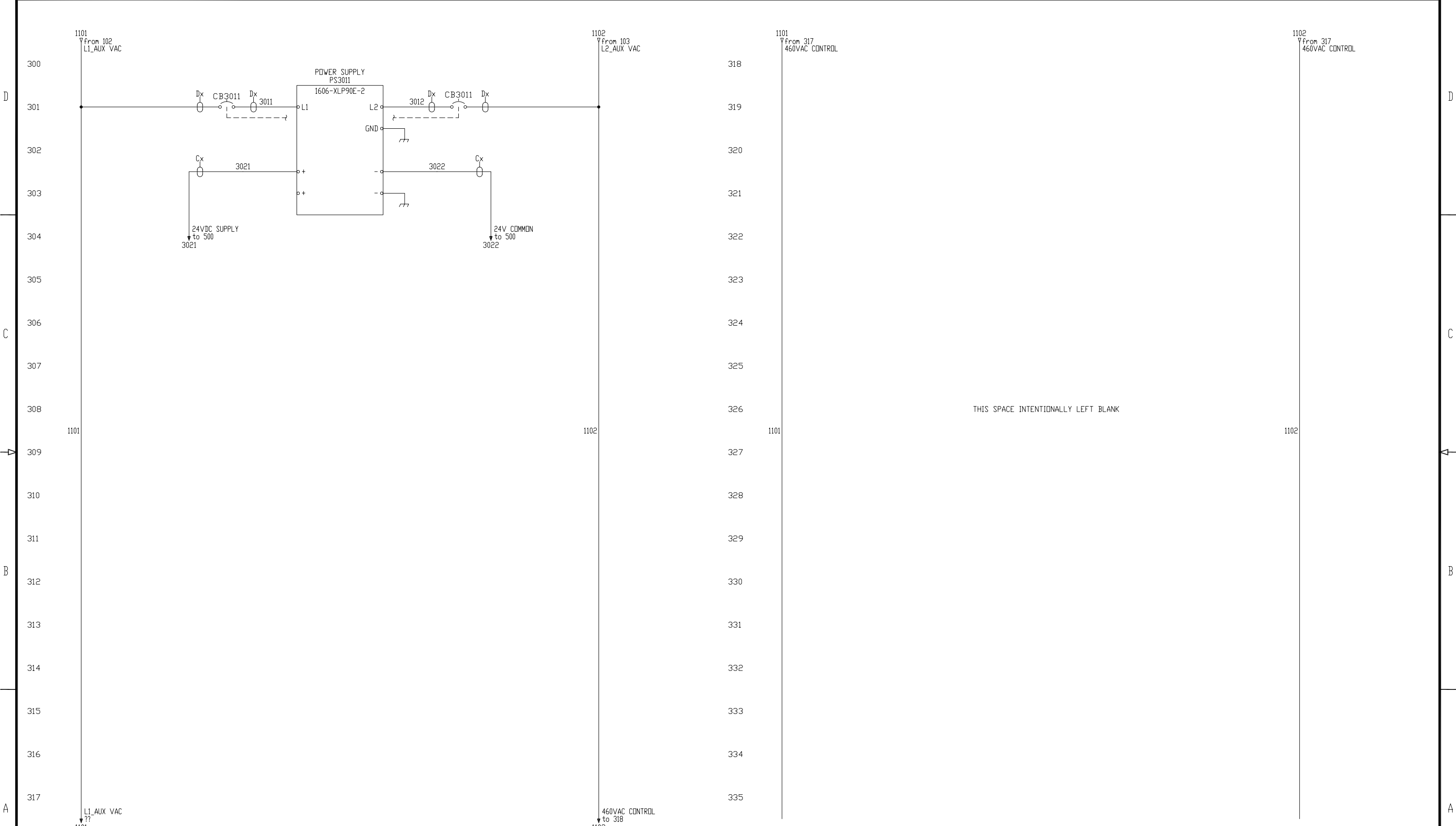
218
219
220
221
222
223
224
225
226
227
228
229
230
231
232
233
234
235

XXXX XXXXXX XX XXX XXXXXXXX
XX XXXXXXXX XXXXXXXXXX
XX XXX XXXXXXXXXXXXXXXXXXXX
XXXXXX XX XXXXXXXXXXXXXXX XXX XXX
XXXXXXXX XXXXXX XX XXXXXXXXXXXX

XXXXXX_XXXX
XXXXXX

CONNECTED COMPONENTS
POSITION CONTROL VIA HMI
POWER DISTRIBUTION

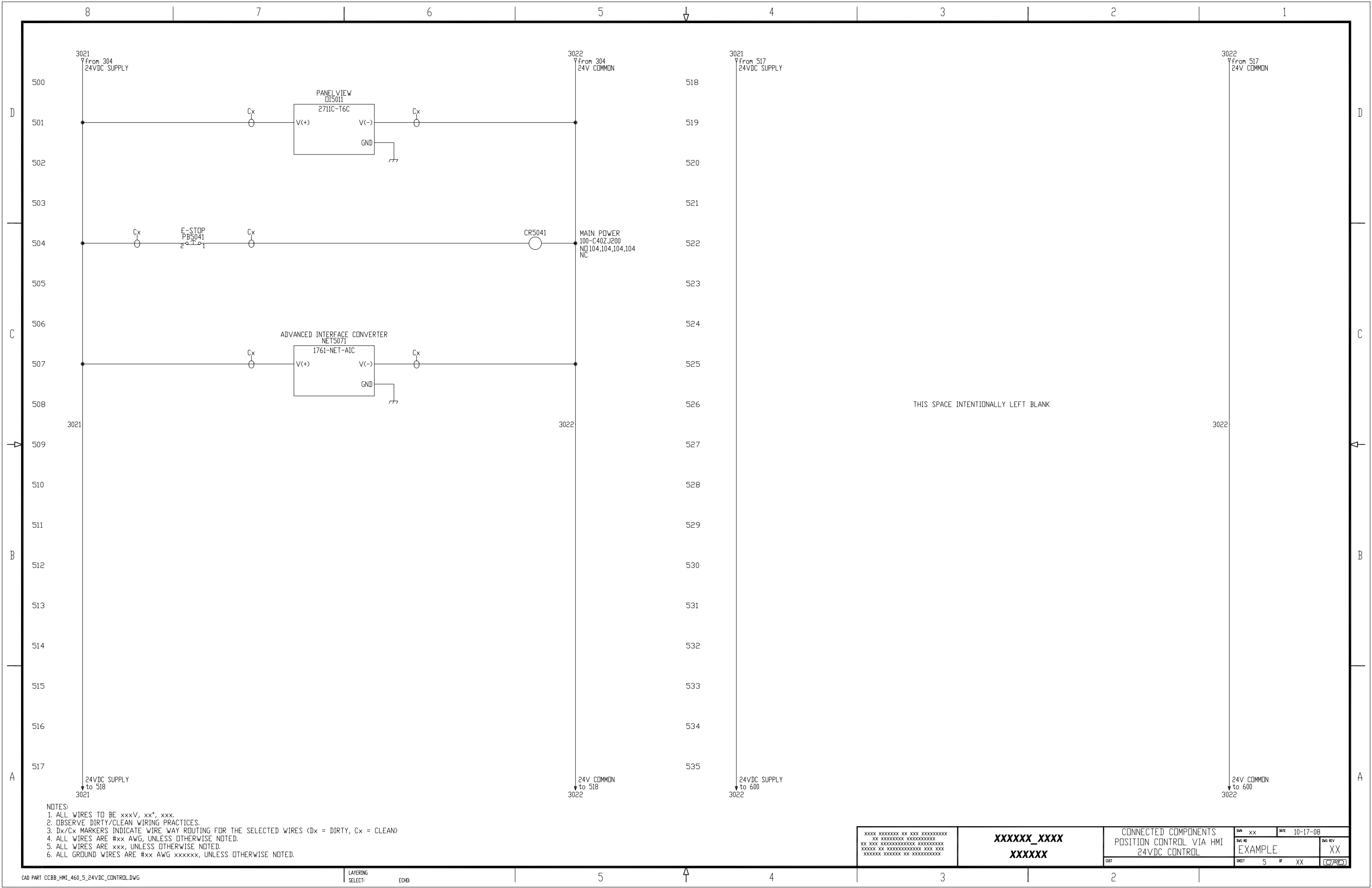
DWG NO	DATE	DWG REV
EXAMPLE	10-17-08	XX
SHEET	OF	
2	XX	



THIS SPACE INTENTIONALLY LEFT BLANK

- NOTES:
1. ALL WIRES TO BE xxxV, xx*, xxx.
 2. OBSERVE DIRTY/CLEAN WIRING PRACTICES.
 3. Dx/Cx MARKERS INDICATE WIRE WAY ROUTING FOR THE SELECTED WIRES (Dx = DIRTY, Cx = CLEAN)
 4. ALL WIRES ARE #xx AWG, UNLESS OTHERWISE NOTED.
 5. ALL WIRES ARE xxx, UNLESS OTHERWISE NOTED.
 6. ALL GROUND WIRES ARE #xx AWG xxxxxx, UNLESS OTHERWISE NOTED.

XXXX XXXXXXXX XX XXX XXXXXXXXXXXX XX XXXXXXXXXXXX XXXXXXXXXXXX XX XXX XXXXXXXXXXXX XXXXXXXXXXXX XXXXXX XX XXXXXXXXXXXX XXX XXX XXXXXXX XXXXXXX XX XXXXXXXXXXXX	XXXXXX_XXXX XXXXXX	CONNECTED COMPONENTS POSITION CONTROL VIA HMI 460VAC CONTROL	DWG: XX DATE: 10-17-08
		DWT: 3 DF: XX	Dwg REV: XX (C/A/C)



- NOTES:
1. ALL WIRES TO BE xxxV, xx*, xxx.
 2. OBSERVE DIRTY/CLEAN WIRING PRACTICES.
 3. Dx/Cx MARKERS INDICATE WIRE WAY ROUTING FOR THE SELECTED WIRES (Dx = DIRTY, Cx = CLEAN)
 4. ALL WIRES ARE #xx AWG, UNLESS OTHERWISE NOTED.
 5. ALL WIRES ARE xxx, UNLESS OTHERWISE NOTED.
 6. ALL GROUND WIRES ARE #xx AWG xxxxxx, UNLESS OTHERWISE NOTED.

XXXXX_XXXX XXXXXX	CONNECTED COMPONENTS POSITION CONTROL VIA HMI 24VDC CONTROL	DWG XX DATE 10-17-08
	DWT 5 OF XX	Dwg REV EXAMPLE XX

8 7 6 5 4 3 2 1

D

D

C

C

B

B

A

A

3021
from 535
24VDC SUPPLY

???
from 535
24V COMMON

3021
from 617
24VDC SUPPLY

3022
from 617
24V COMMON

600
601
602
603
604
605
606
607
608
609
610
611
612
613
614
615
616
617

618
619
620
621
622
623
624
625
626
627
628
629
630
631
632
633
634
635

THIS SPACE INTENTIONALLY LEFT BLANK

THIS SPACE INTENTIONALLY LEFT BLANK

3021

3021

3022

24VDC SUPPLY
to 618
3021

24V COMMON
to 618
3021

24VDC SUPPLY
to 700
3021

24V COMMON
to 700
3022

XXXX XXXXXXXX XX XXX XXXXXXXXXXXX XX XXXXXXXXXXXX XXXXXXXXXXXX XX XXX XXXXXXXXXXXX XXXXXXXXXXXX XXXXXX XX XXXXXXXXXXXX XXX XXX XXXXXX XXXXXXXX XX XXXXXXXXXXXX	XXXXXX_XXXX XXXXXX	CONNECTED COMPONENTS POSITION CONTROL VIA HMI SAFETY SPARE		DWG XX	DATE 10-17-08
		DWT 6	DR XX	DWG REV EXAMPLE	XX

D

C

B

A

D

C

B

A

3021
from 635
24VDC SUPPLY

3022
from 635
24V COMMON

3021
from 717
24VDC SUPPLY

3022
from 717
24V COMMON

700
701
702
703
704
705
706
707
708
709
710
711
712
713
714
715
716
717

718
719
720
721
722
723
724
725
726
727
728
729
730
731
732
733
734
735

3022
24V COMMON
to 800

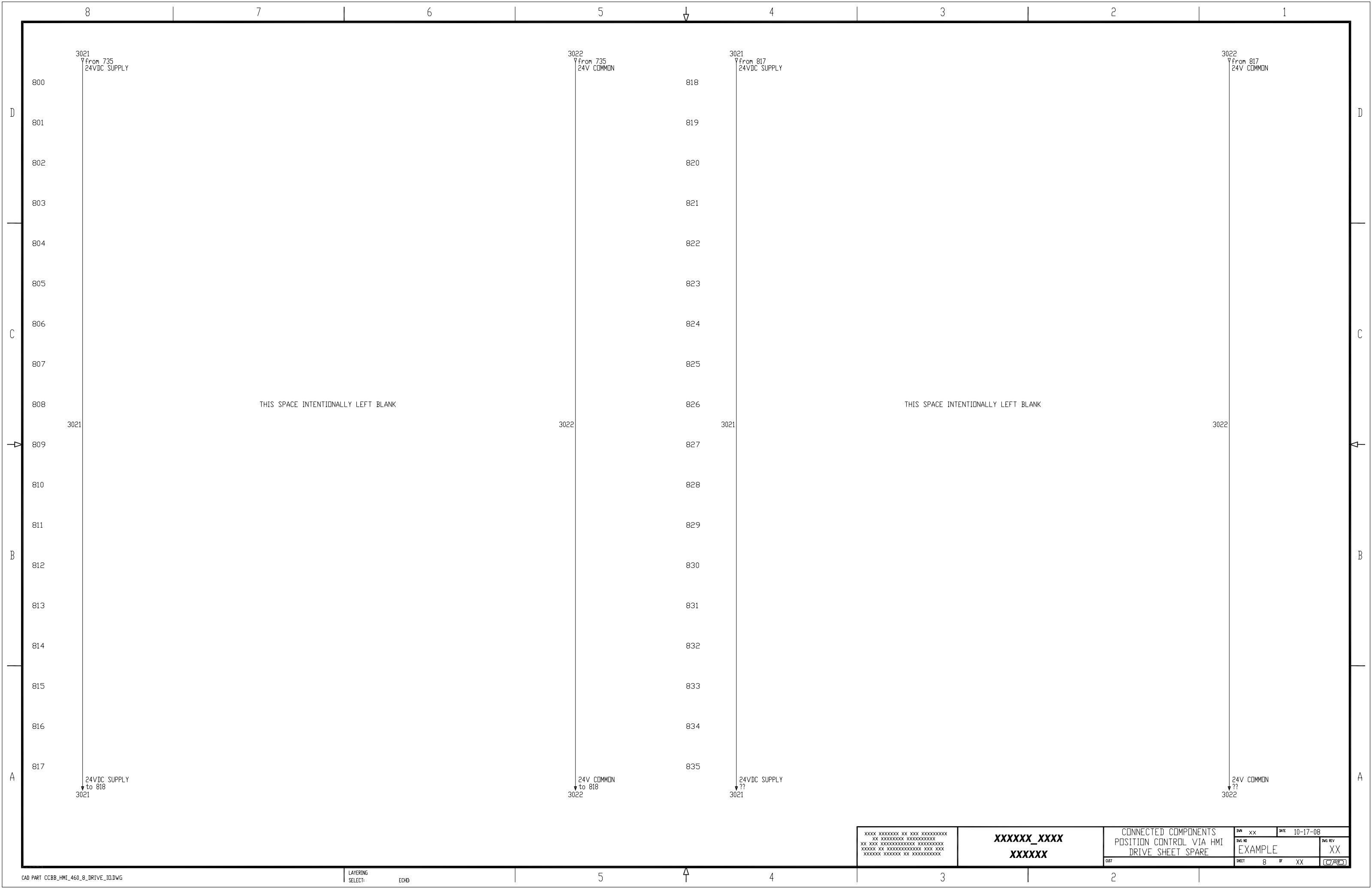
3021
24VDC SUPPLY
to 800

3022
24V COMMON
to 718

3021
24VDC SUPPLY
to 718

THIS SPACE INTENTIONALLY LEFT BLANK

XXXX XXXXXXXX XX XXX XXXXXXXXXXXX XX XXXXXXXXXXXX XXXXXXXXXXXX XX XXX XXXXXXXXXXXX XXXXXXXXXXXX XXXXXX XX XXXXXXXXXXXX XXX XXX XXXXXXX XXXXXXX XX XXXXXXXXXXXX	XXXXXX_XXXX XXXXXX	CONNECTED COMPONENTS POSITION CONTROL VIA HMI 24VDC SPARE		DWG XX	DATE 10-17-08
		DWT 7	DR XX	DWT REV EXAMPLE	DWT REV XX



3021
 Y from 735
 24VDC SUPPLY

3022
 Y from 735
 24V COMMON

3021
 Y from 817
 24VDC SUPPLY

3022
 Y from 817
 24V COMMON

THIS SPACE INTENTIONALLY LEFT BLANK

THIS SPACE INTENTIONALLY LEFT BLANK

3021

3022

3021

3022

24VDC SUPPLY
 to 818
 3021

24V COMMON
 to 818
 3022

24VDC SUPPLY
 ??
 3021

24V COMMON
 ??
 3022

XXXX XXXXXXXX XX XXX XXXXXXXXXXXX
 XX XXXXXXXXXXXX XXXXXXXXXXXX
 XX XXX XXXXXXXXXXXX XXXXXXXXXXXX
 XXXXXX XX XXXXXXXXXXXX XXX XXX
 XXXXXXX XXXXXXX XX XXXXXXXXXXXX

XXXXXX_XXXX
 XXXXXX

CONNECTED COMPONENTS
 POSITION CONTROL VIA HMI
 DRIVE SHEET SPARE

DWG	XX	DATE	10-17-08
DWG NO	EXAMPLE		DWG REV
			XX
SHEET	8	OF	XX

D

C

B

A

D

C

B

A

3021
from 835
24VDC SUPPLY

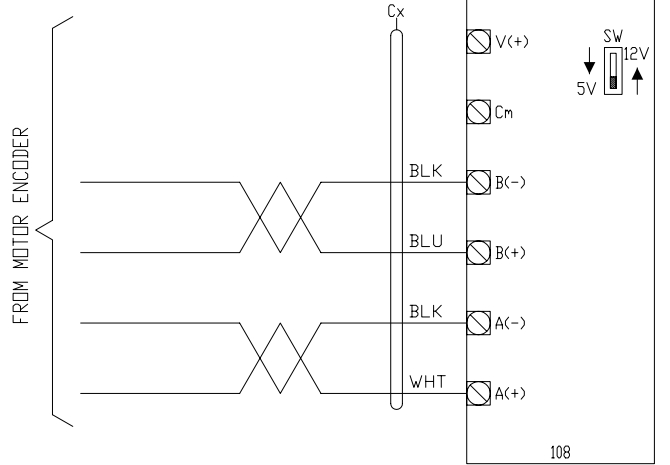
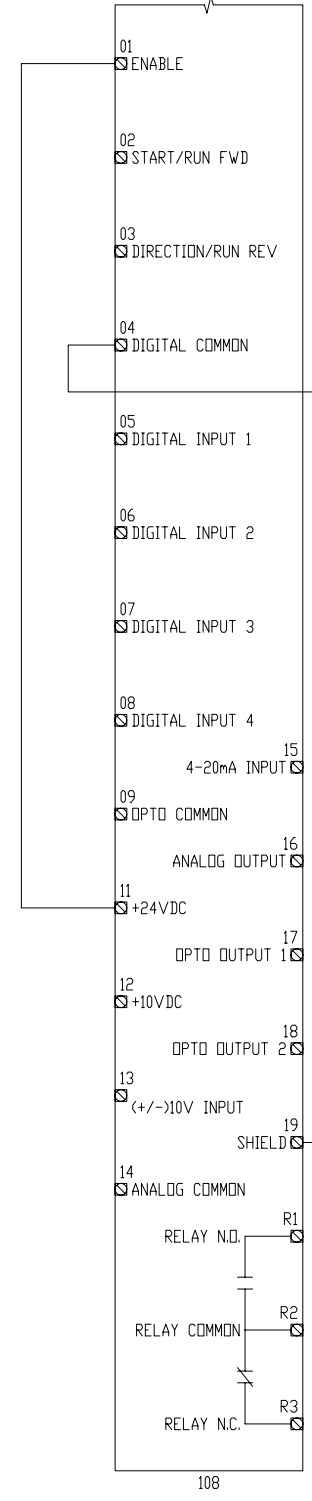
POWERFLEX 40P
DRIVE1
DR1081

3022
from 835
24V COMMON

3021
from 917
24VDC SUPPLY

POWERFLEX 40P
DRIVE1
DR1081

3022
from 917
24V COMMON



3021

3022

3021

3022

24VDC SUPPLY
to 918
3021

24V COMMON
to 918
3022

24VDC SUPPLY
to 1000
3021

24V COMMON
to 1000
3022

- NOTES:
1. ALL WIRES TO BE xxxV, xx*, xxx.
 2. OBSERVE DIRTY/CLEAN WIRING PRACTICES.
 3. Dx/Cx MARKERS INDICATE WIRE WAY ROUTING FOR THE SELECTED WIRES (Dx = DIRTY, Cx = CLEAN)
 4. ALL WIRES ARE #xx AWG, UNLESS OTHERWISE NOTED.
 5. ALL WIRES ARE xxx, UNLESS OTHERWISE NOTED.
 6. ALL GROUND WIRES ARE #xx AWG xxxxxxx, UNLESS OTHERWISE NOTED.

XXXX XXXXXXXX XX XXX XXXXXXXXXXXX XX XXXXXXXXXXXX XXXXXXXXXXXX XX XXXXXXXXXXXX XXXXXXXXXXXX XXXXXXXX XXXXXXXXXXXX XXX XXX XXXXXXXX XXXXXXXX XX XXXXXXXXXXXX	XXXXXX_XXXX XXXXXX	CONNECTED COMPONENTS POSITION CONTROL VIA HMI POWERFLEX 40P I/O	DWG NO EXAMPLE	DATE 10-17-08	DWG REV XX
			SHEET 9	OF XX	

8

7

6

5

4

3

2

1

3021
from 935
24VDC SUPPLY

3022
from 935
24V COMMON

3021
from 1017
24VDC SUPPLY

3022
from 1017
24V COMMON

1000

1018

1001

1019

1002

1020

1003

1021

1004

1022

1005

1023

1006

1024

1007

1025

1008

1026

1009

1027

1010

1028

1011

1029

1012

1030

1013

1031

1014

1032

1015

1033

1016

1034

1017

1035

THIS SPACE INTENTIONALLY LEFT BLANK

THIS SPACE INTENTIONALLY LEFT BLANK

3021

3022

24VDC SUPPLY
to 1018
3021

24V COMMON
to 1018
3022

24VDC SUPPLY
to 1100
3021

24V COMMON
to 1100
3022

- NOTES:
1. ALL WIRES TO BE xxxV, xx*, xxx.
 2. OBSERVE DIRTY/CLEAN WIRING PRACTICES.
 3. Dx/Cx MARKERS INDICATE WIRE WAY ROUTING FOR THE SELECTED WIRES (Dx = DIRTY, Cx = CLEAN)
 4. ALL WIRES ARE #xx AWG, UNLESS OTHERWISE NOTED.
 5. ALL WIRES ARE xxx, UNLESS OTHERWISE NOTED.
 6. ALL GROUND WIRES ARE #xx AWG xxxxxx, UNLESS OTHERWISE NOTED.

XXXX XXXXXXXX XX XXX XXXXXXXXXXXX
XX XXXXXXXXXXXX XXXXXXXXXXXX
XX XXX XXXXXXXXXXXX XXXXXXXXXXXX
XXXXXX XX XXXXXXXXXXXX XXX XXX
XXXXXXXX XXXXXXXX XX XXXXXXXXXXXX

XXXXXX_XXXX
XXXXXX

CONNECTED COMPONENTS
POSITION CONTROL VIA HMI
PLC I/O SPARE

DWG NO
EXAMPLE

DWG REV
XX

DATE 10-17-08
SHEET 10 OF XX

A

B

C

D

A

B

C

D

8

7

6

5

4

3

2

1

D

C

B

A

D

C

B

A

1100
1101
1102
1103
1104
1105
1106
1107
1108
1109
1110
1111
1112
1113
1114
1115
1116
1117

1118
1119
1120
1121
1122
1123
1124
1125
1126
1127
1128
1129
1130
1131
1132
1133
1134
1135

THIS SPACE INTENTIONALLY LEFT BLANK

THIS SPACE INTENTIONALLY LEFT BLANK

XXXX XXXXXXXX XX XXX XXXXXXXXXXXX
 XX XXXXXXXXXXXX XXXXXXXXXXXX
 XX XXX XXXXXXXXXXXX XXXXXXXXXXXX
 XXXXXX XX XXXXXXXXXXXX XXX XXX
 XXXXXXX XXXXXXX XX XXXXXXXXXXXX

XXXXXX_XXXX
XXXXXX

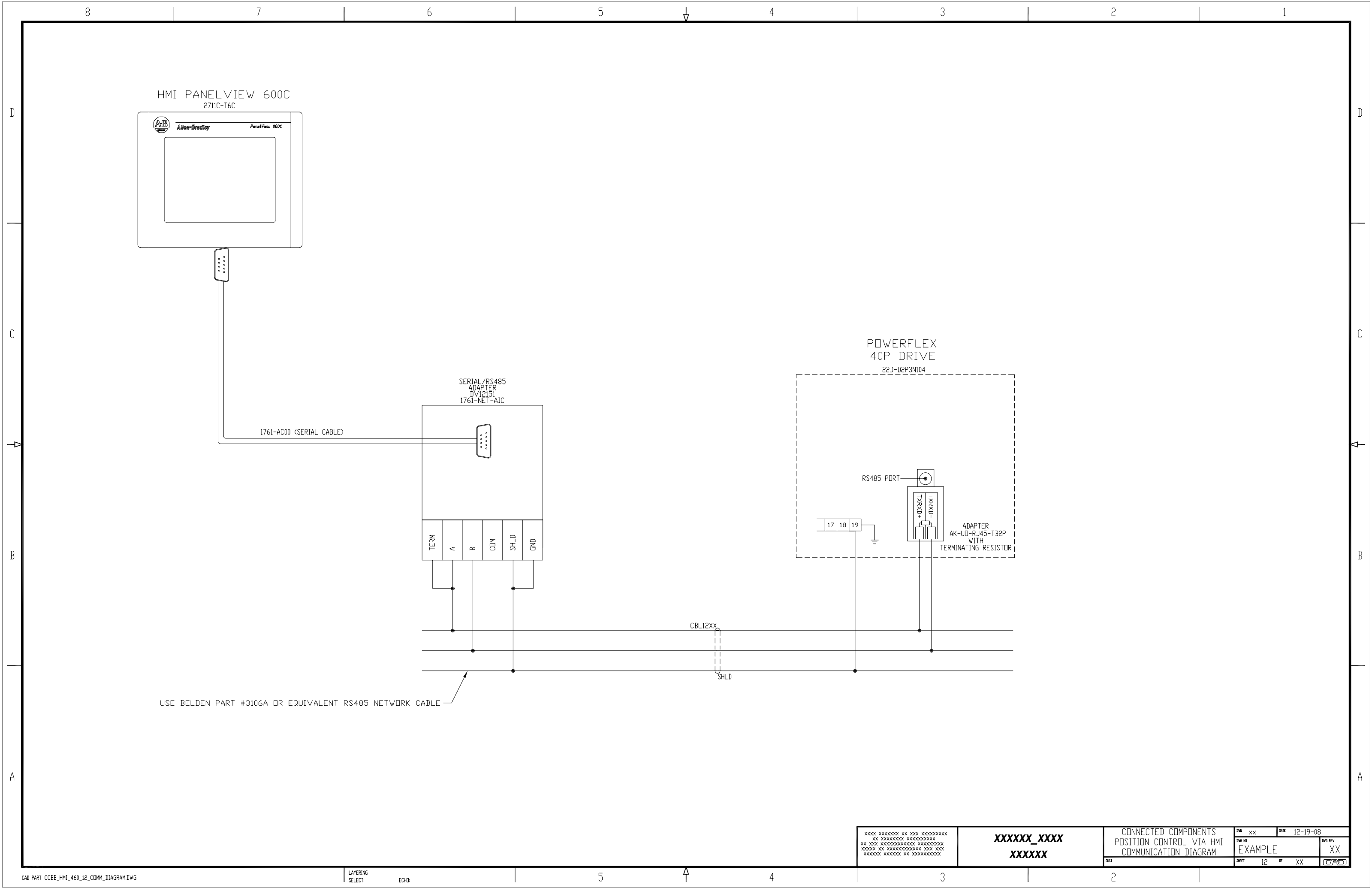
CONNECTED COMPONENTS
 POSITION CONTROL VIA HMI
 PLC I/O SPARE

DWG XX DATE 10-17-08

DWG REV EXAMPLE XX

SHEET 11 OF XX

(P&ID)

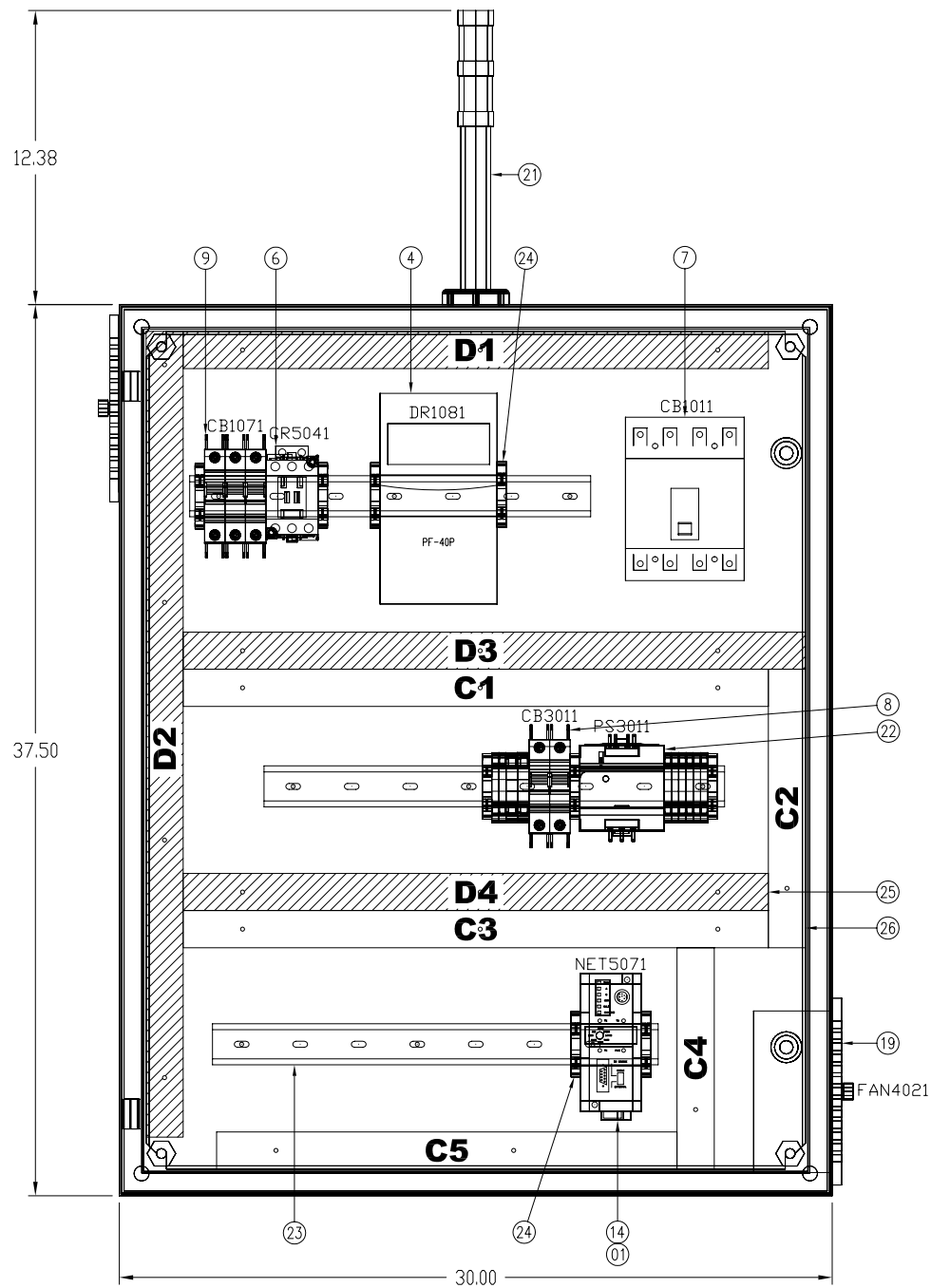
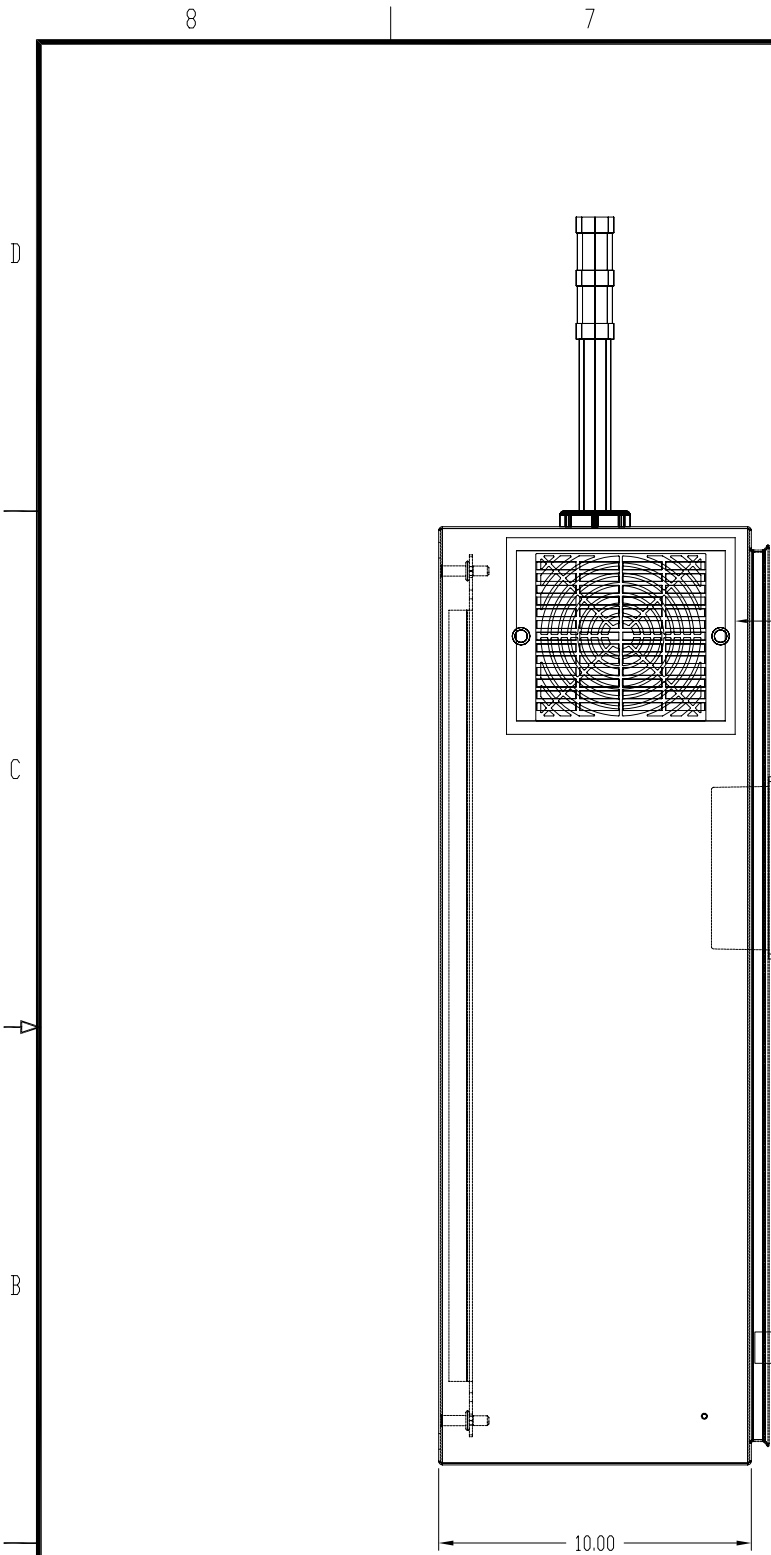


XXXX XXXXXXXX XX XXX XXXXXXXXXXXX
 XX XXXXXXXXXXXX XXXXXXXXXXXX
 XX XXX XXXXXXXXXXXX XXXXXXXXXXXX
 XXXXXX XX XXXXXXXXXXXX XXX XXX
 XXXXXXX XXXXXXX XX XXXXXXXXXXXX

XXXXXX_XXXX
 XXXXXX

CONNECTED COMPONENTS
 POSITION CONTROL VIA HMI
 COMMUNICATION DIAGRAM

DWG NO	DATE	DWG REV
EXAMPLE	12-19-08	XX
SHEET	OF	DATE
12	XX	12-19-08



ITEM	QTY	DESCRIPTION	MFG	CATALOG
1	1	NEMA1 ENCLOSURE 30"x24"x10"	HOF	CSD302410
2	1	PANEL FOR ENCLOSURE 21"x22.5"	HOF	CP3024
3				
4	1	POWERFLEX-40P DRIVE 480VAC/2.3A/1HP	AB	22D-D2P3N104
5				
6	1	CONTACTOR MCS-C, IEC,37A, 24V DC, SINGLE PACK	AB	100-C40ZJ200
7	1	CIRCUIT BREAKER IEC, H-FRAME T/M 32 AMP	AB	140UE-H2E4-C32
8	1	CIRCUIT BREAKER 2 POLE 10 AMP 480/277VAC	AB	1489-A2D100
9	1	CIRCUIT BREAKER 3 POLE 7 AMP 480/277VAC	AB	1489-A3C070
10	1	6" COLOR (TRANSMISSIVE CSTN) TOUCHSCREEN	AB	2711C-T6C
11				
12				
13				
14	1	ADVANCED INTERFACE CONVERTER (RS232/RS485)	AB	1761-NET-AIC
15	1	SERIAL CABLE FOR AIC	AB	1761-AC00
16				
17				
18	-	-	-	-
19	1	FAN KIT 115V WITH FILTER	HOFFMAN	TFP41
20	1	EXHAUST GRILL WITH FILTER	HOFFMAN	TEP4
21	1	STACKLIGHT 30mm S.M. 24VAC/DC GRN, RED LED	AB	885D-P00SC20G24Y3Y4
22	1	COMPACT POWER SUPPLY, 24VDC OUTPUT, WIDERANGE INPUT	AB	1606-XLP90E-2
23	3	35mm DIN RAIL	AB	199-DR1
24	9	END ANCHOR USED w/STANDARD 35mm DIN	AB	1492-EAJ35
25	-	PANDUIT WIRE DUCT, 1"x4" GRAY	PANDUIT	F1X4LG6
26	-	PANDUIT WIRE DUCT COVER, 1" GRAY	PANDUIT	C1LG6
27	-	PANDUIT WIRE DUCT, 1" x4" WHITE	PANDUIT	F1X4WH6
28	-	PANDUIT WIRE DUCT COVER, 1" WHITE	PANDUIT	C1WH6
29	1	3 POS. SELECTOR SWITCH, MAINTAINED, BLACK	AB	800FP-SM32
30	1	MUSHROOM HEAD PUSHBUTTON, TWIST TO RELEASE	AB	800FP-MT44
31	1	E-STOP LEGEND PLATE	AB	800F-15YE112
32	1	SELECTOR SWITCH LEGEND PLATE, AUTO-OFF-HAND	AB	800F-11WE104
33	1	PUSHBUTTON, EXTENDED HEAD, RED	AB	800FP-E405
34	1	PUSHBUTTON, FLUSH HEAD, GREEN	AB	800FP-F306
35	4	CONTACT BLOCK, N.O.	AB	800F-X10
36	2	CONTACT BLOCK, N.C.	AB	800F-X01
37	4	PLASTIC MOUNTING LATCH	AB	800F-ALP
38	1	CIRCUIT BREAKER OPERATOR W/ROD	AB	140U-H-RVM12R
39	1	RECEPTACLE (M12), FEMALE, STRAIGHT, 4 PIN, 22AWG	AB	888D-F4AC1-1

NOTES:
 1. WIREWAYS MARKED Cx/Dx INDICATE CLEAN/DIRTY SIGNAL/POWER
 2. FOR FURTHER INFORMATION ON SYSTEM DESIGN FOR CONTROL OF ELECTRICAL NOISE SEE ROCKWELL PUBLICATION #GMC RM001-EN-P

XXXX XXXXXXXX XX XXX XXXXXXXXXXXX
 XX XXXXXXXXXXXX XXXXXXXXXXXX
 XXXXX XX XXXXXXXXXXXXXXX XXX XXX
 XXXXXXX XXXXXXX XX XXXXXXXXXXXX

XXXXXX_XXXX
 XXXXXX

CONNECTED COMPONENTS
 POSITION CONTROL VIA HMI
 PANEL LAYOUT

DWG NO	DATE	DWG REV
EXAMPLE	10-17-08	XX
SHEET	OF	
13	XX	

8

7

6

5

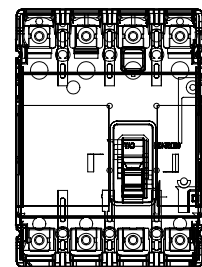
4

3

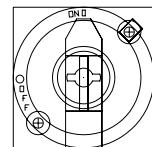
2

1

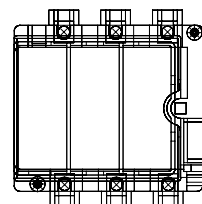
ADDITIONAL PARTS LIST



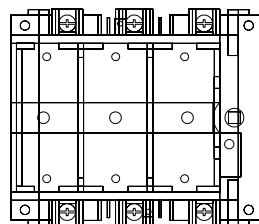
51 'F' FRAME CIRCUIT BREAKER



50 ROTARY VARIABLE DEPTH MECHANISM



52 30A FUSED DISCONNECT



53 60A FUSED DISCONNECT

ITEM	DESCRIPTION	MFG	CATALOG
50	ROTARY VARIABLE DEPTH MECHANISM	AB	140U-RVM12R
51	'F' FRAME CIRCUIT BREAKER	AB	140UE-H2EA-C32
52	30A FUSED DISCONNECT	AB	194R-C30-1753
53	60A FUSED DISCONNECT	AB	194R-D32/D63-1753
54	-	-	-
55	-	-	-
56	-	-	-
57	-	-	-
58	-	-	-

XXXXX_XXXX XXXXXX	CONNECTED COMPONENTS POSITION CONTROL VIA HMI ADDITIONAL PARTS	DWG NO EXAMPLE	DATE 11-07-08	DWG REV XX
		SHEET 15	OF XX	(C/A/C)

5

4

3

2

8 7 6 5 4 3 2 1

D

C

B

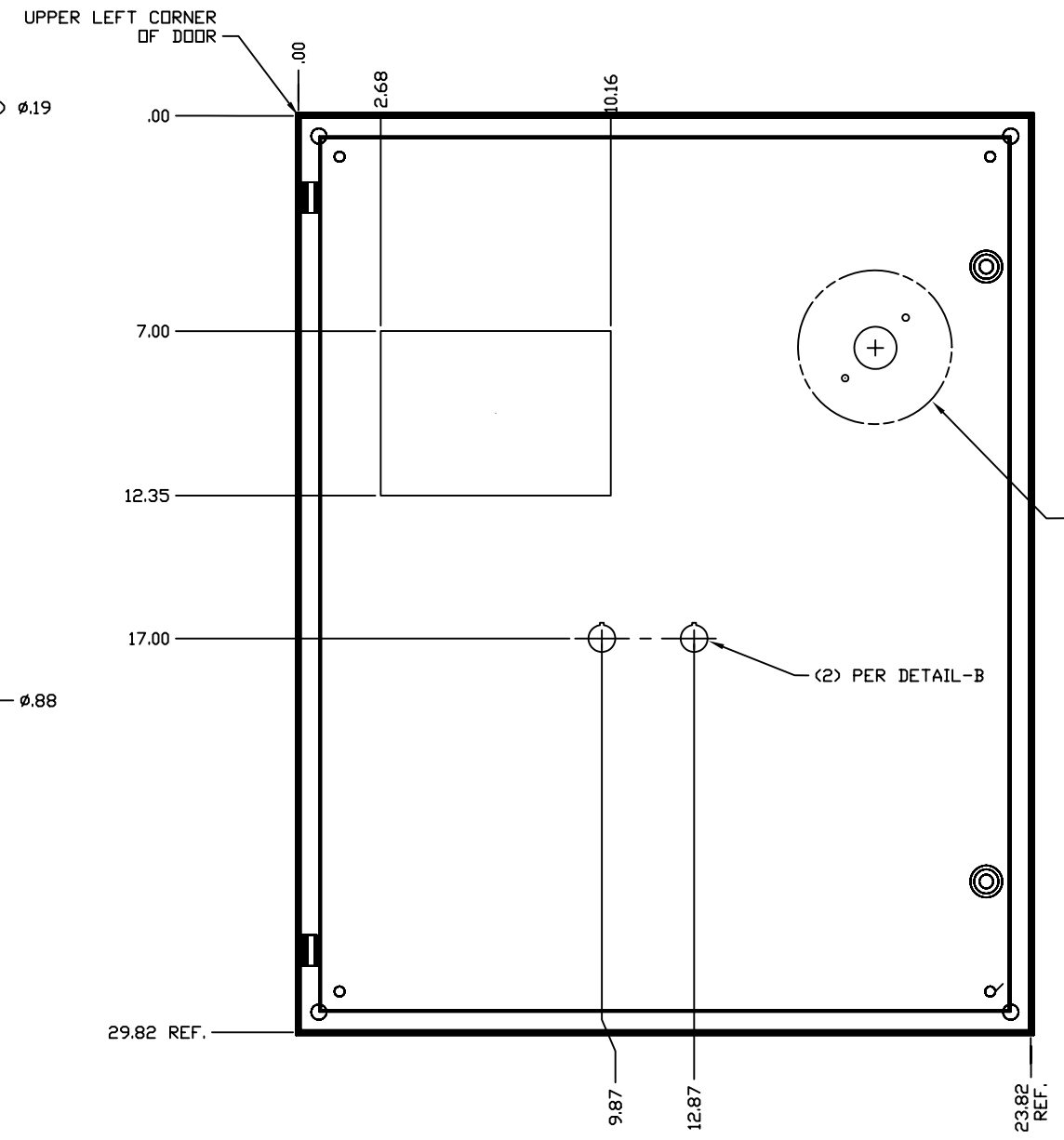
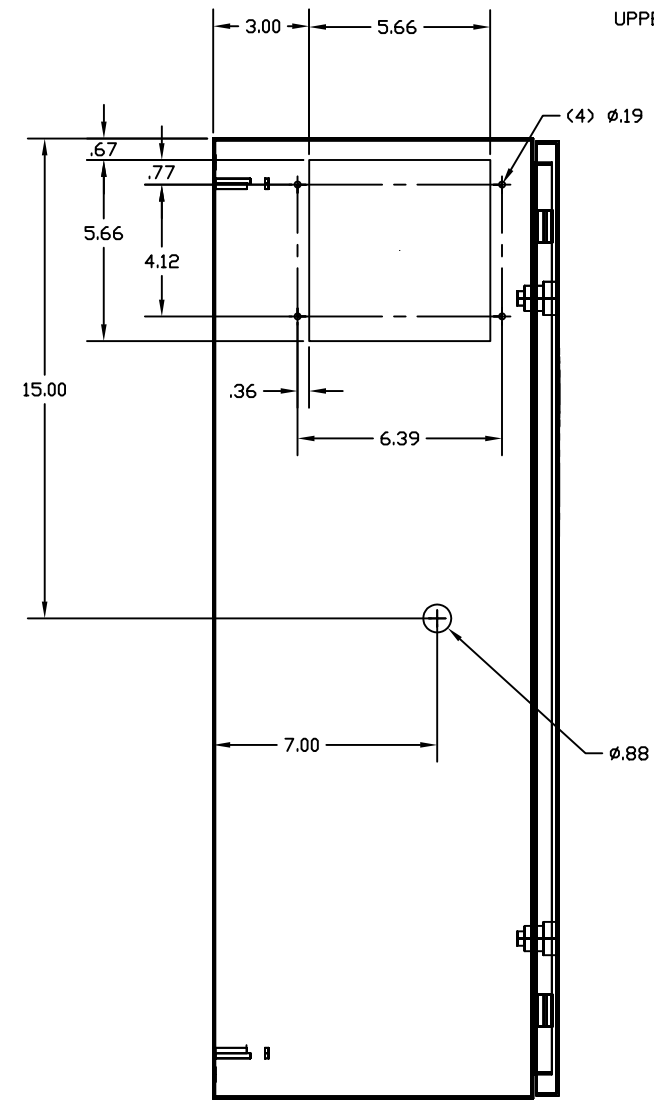
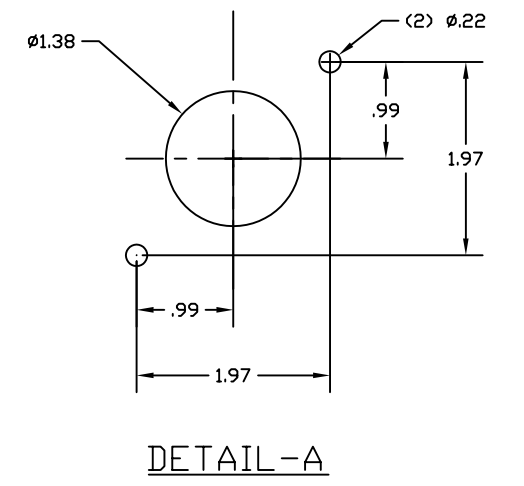
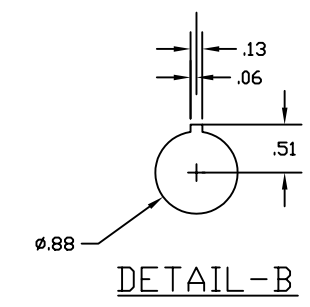
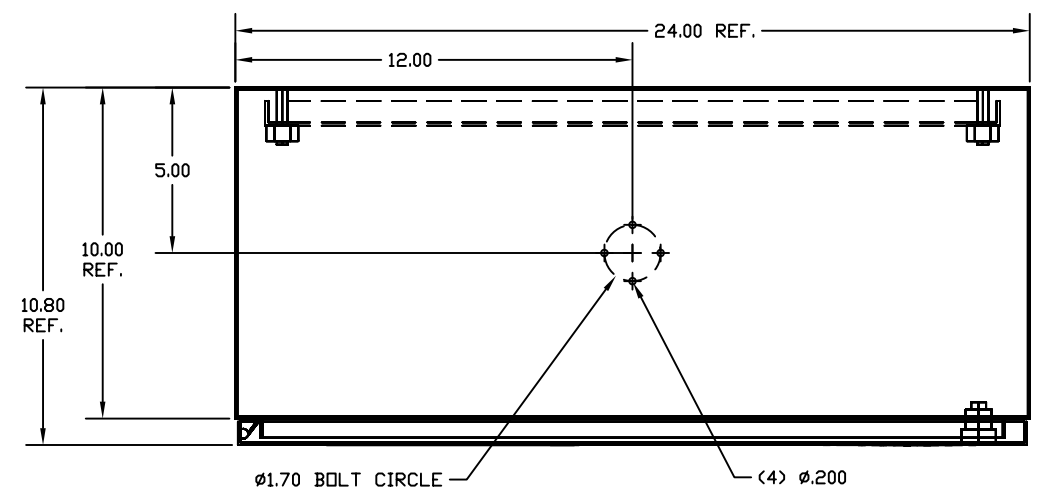
A

D

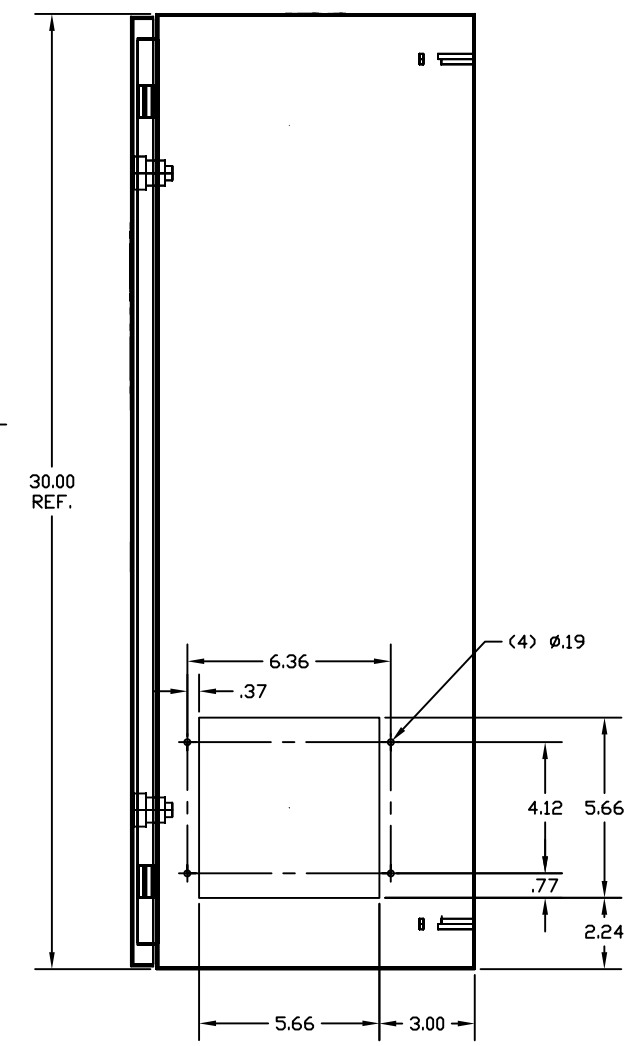
C

B

A



PER DETAIL-A,
(SEE SHEET 2 FOR ALL
OPERATOR OPTION
LOCATIONS)



DOOR MODIFICATION

-01	1	HOFFMAN PART CSD302410	ANSI 61 GRAY
PART NO.	CHG. CHAR.	MATERIAL	SURFACE TREATMENT

CAD PART CCBB_HMI_460_15_ENCLOSURE_DOOR_LAYOUT.DWG

LAYERING SELECT: ECHD

XXXX XXXXXXXX XX XXX XXXXXXXXXX
XX XXX XXXXXXXXXX XXXXXXXXXX
XXXXXX XX XXXXXXXXXX XXX XXX
XXXXXX XXXXXXXX XX XXXXXXXXXX

XXXXXX_XXXX
XXXXXX

CONNECTED COMPONENTS
POSITION CONTROL VIA HMI
ENCLOSURE DOOR LAYOUT

DATE	REV	DATE	REV
15	XX	10-17-08	XX
DRAWN BY		CHECKED BY	
EXAMPLE		XX	

8 7 6 5 4 3 2 1