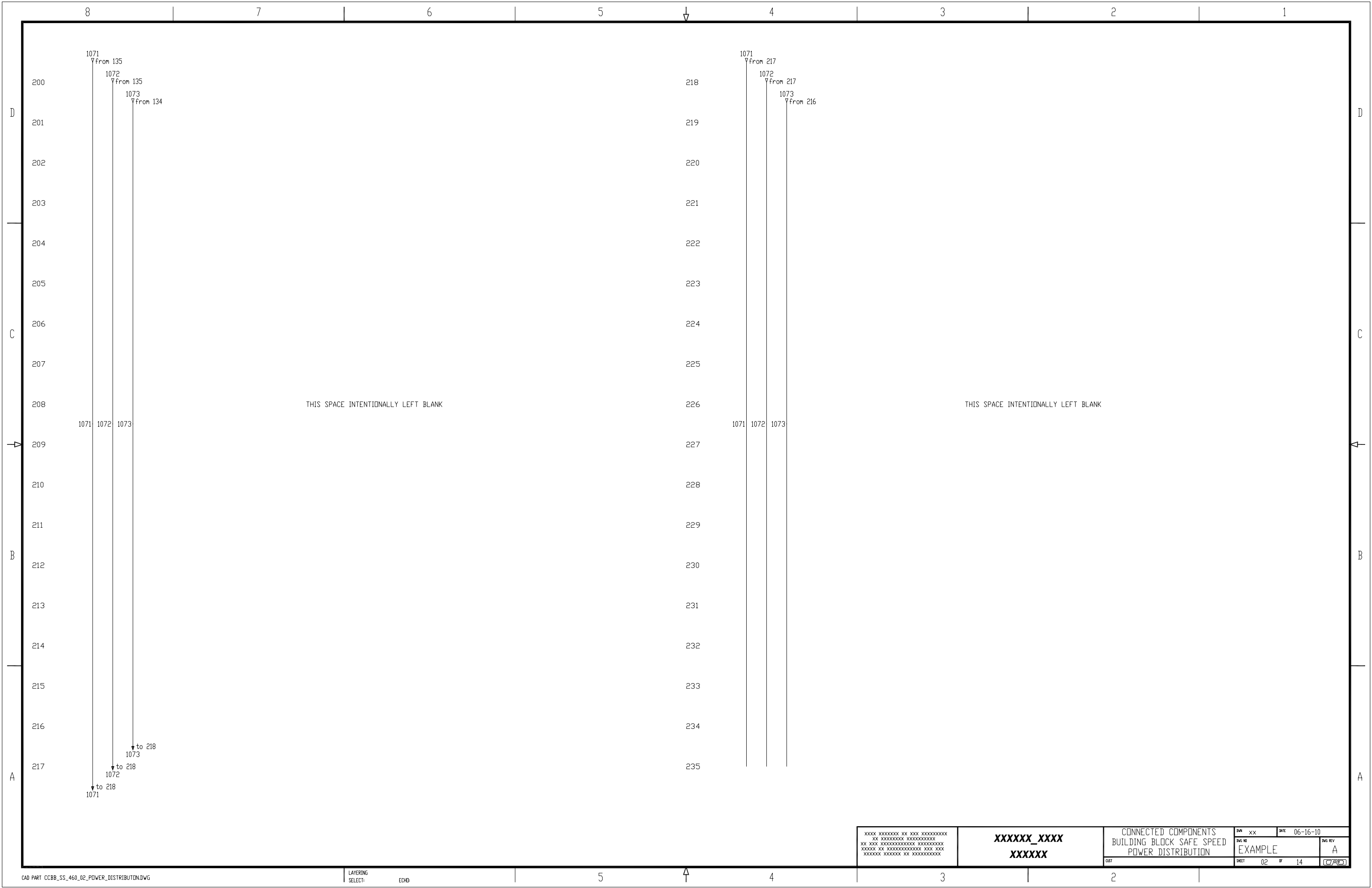
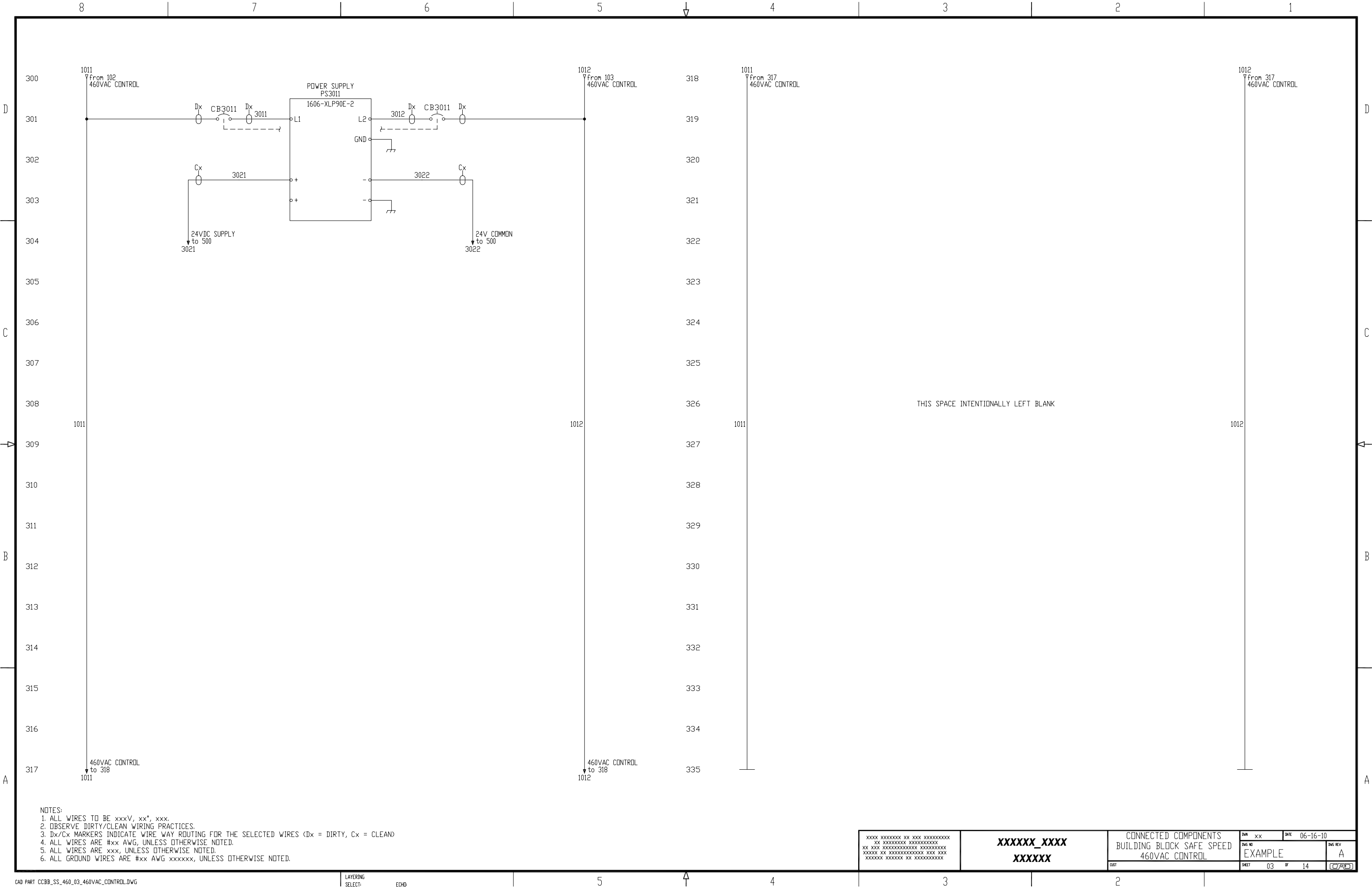


NOTES:
1. ALL WIRES TO BE xxxV, xx*, xxx.
2. OBSERVE DIRTY/CLEAN WIRING PRACTICES.
3. Dx/Cx MARKERS INDICATE WIRE WAY ROUTING FOR THE SELECTED WIRES (Dx = DIRTY, Cx = CLEAN)
4. ALL WIRES ARE #xx AWG, UNLESS OTHERWISE NOTED.
5. ALL WIRES ARE xxx, UNLESS OTHERWISE NOTED.
6. ALL GROUND WIRES ARE #xx AWG xxxxxx, UNLESS OTHERWISE NOTED.

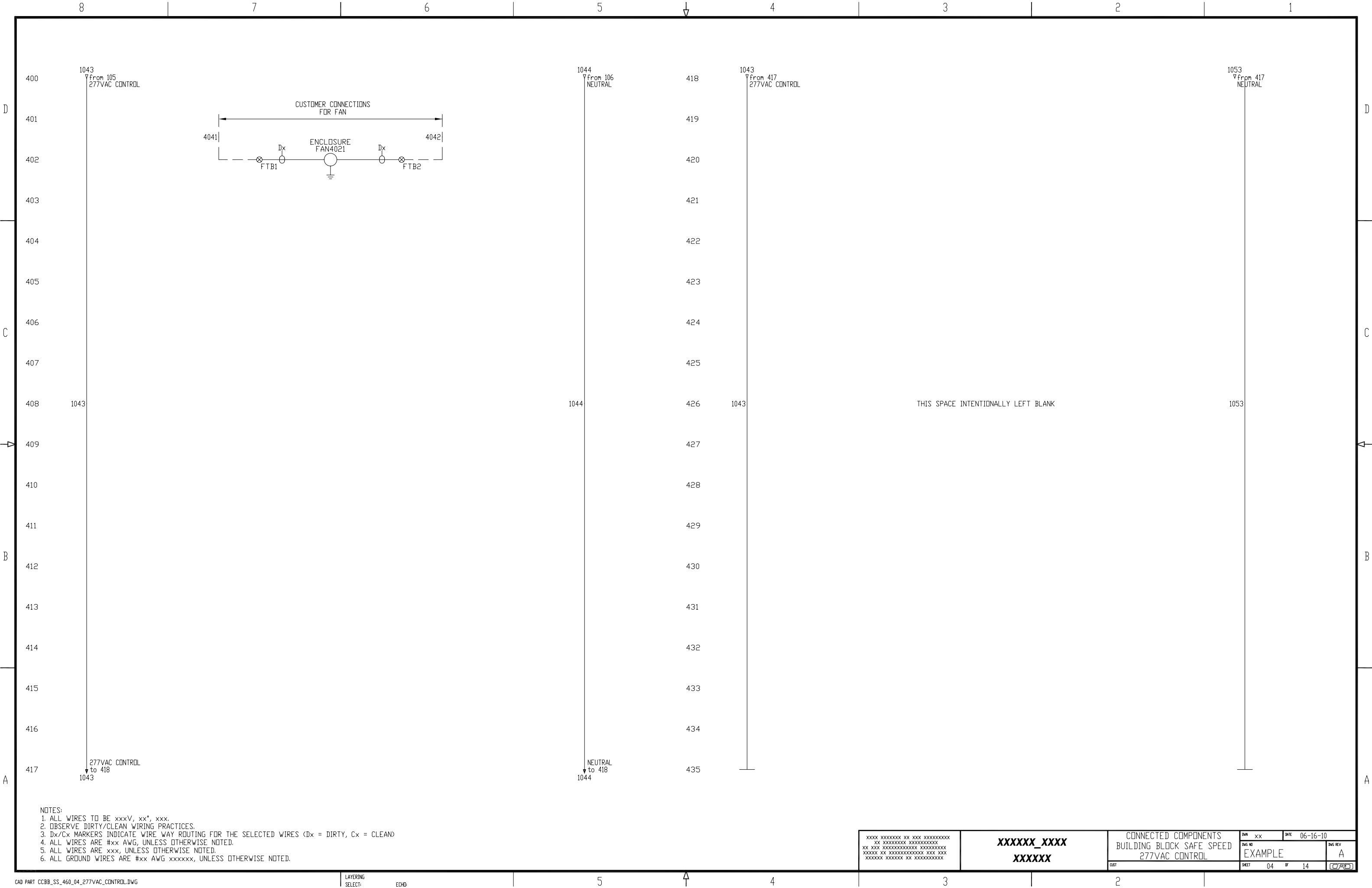
XXXX XXXXXXXX XX XXX XXXXXXXXXX XX XXXXXXXXXX XXXXXXXXXX XX XXX XXXXXXXXXX XXXXXXXXXX XXXXXX XX XXXXXXXXXX XXX XXX XXXXXX XXXXXX XX XXXXXXXXXX	XXXXXX_XXXX XXXXXX	CONNECTED COMPONENTS BUILDING BLOCK SAFE SPEED DRIVE POWER DISTRIBUTION		DWG NO EXAMPLE	DWG REV A
		DIST	SHEET 01 OF 14	DATE 06-16-10	

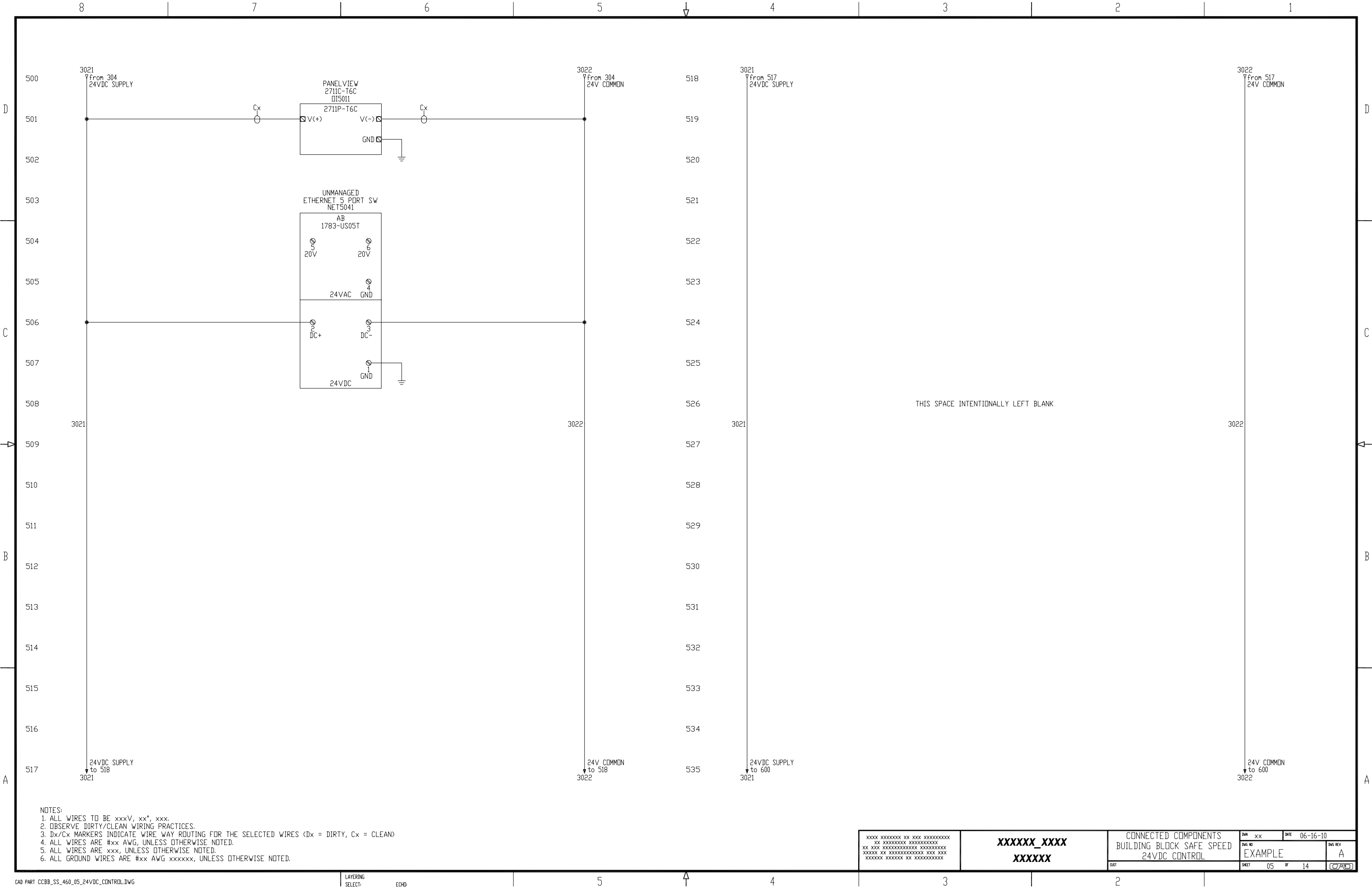




NOTES:
1. ALL WIRES TO BE xxxV, xx*, xxx.
2. OBSERVE DIRTY/CLEAN WIRING PRACTICES.
3. Dx/Cx MARKERS INDICATE WIRE WAY ROUTING FOR THE SELECTED WIRES (Dx = DIRTY, Cx = CLEAN)
4. ALL WIRES ARE #xx AWG, UNLESS OTHERWISE NOTED.
5. ALL WIRES ARE xxx, UNLESS OTHERWISE NOTED.
6. ALL GROUND WIRES ARE #xx AWG xxxxxx, UNLESS OTHERWISE NOTED.

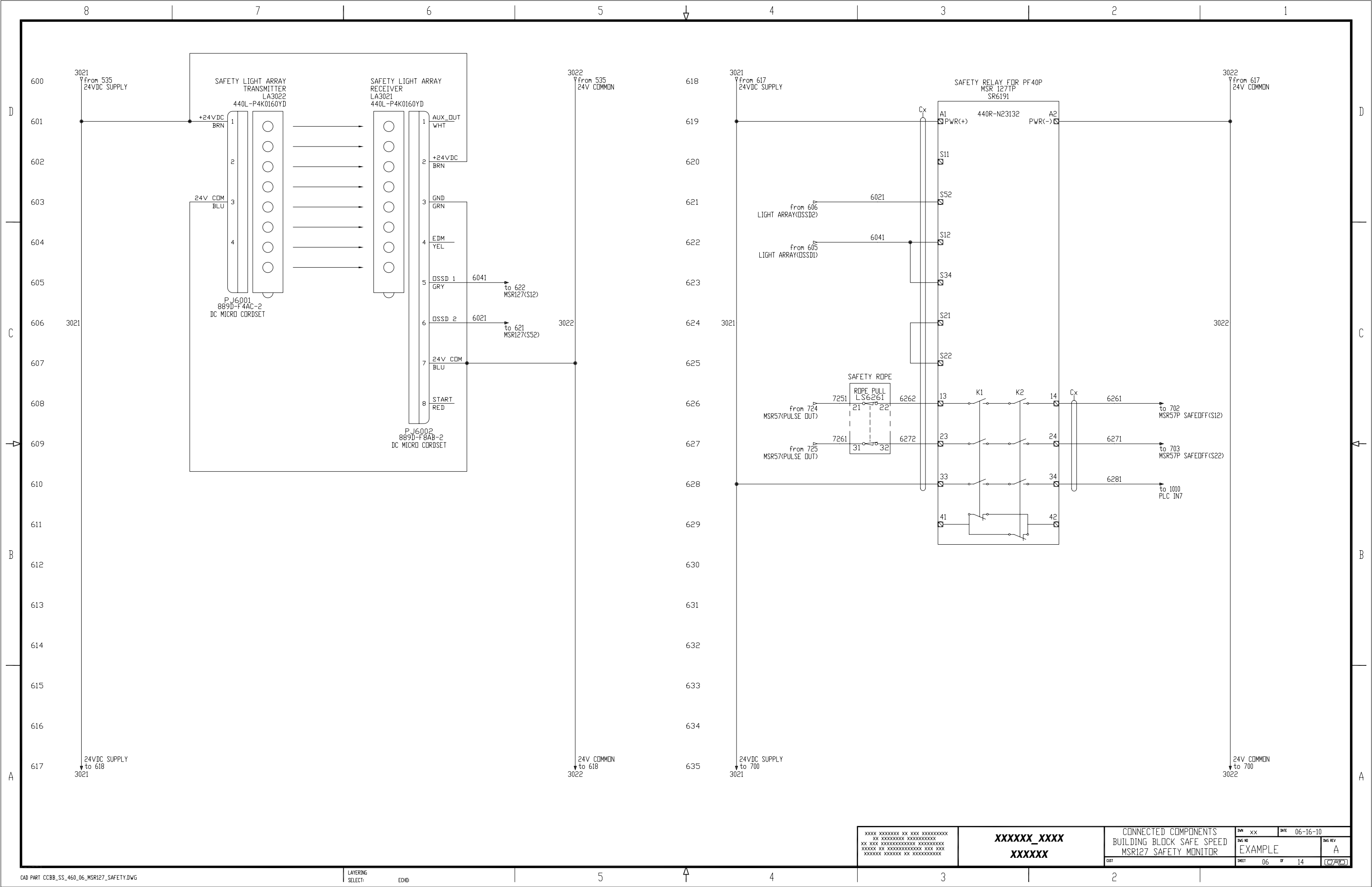
XXXXX XXXXXXXX XX XXX XXXXXXXXXX XX XXXXXXXXXX XXXXXXXXXX XX XXX XXXXXXXXXX XXXXXXXXXX XXXXXX XX XXXXXXXXXX XXX XXX XXXXXX XXXXXX XX XXXXXXXXXX	XXXXXX_XXXX XXXXXX	CONNECTED COMPONENTS BUILDING BLOCK SAFE SPEED 460VAC CONTROL		DWG XX	DATE 06-16-10
				DWG NO EXAMPLE	DWG REV A
	CUST	SHEET 03 OF 14		C/A/D	

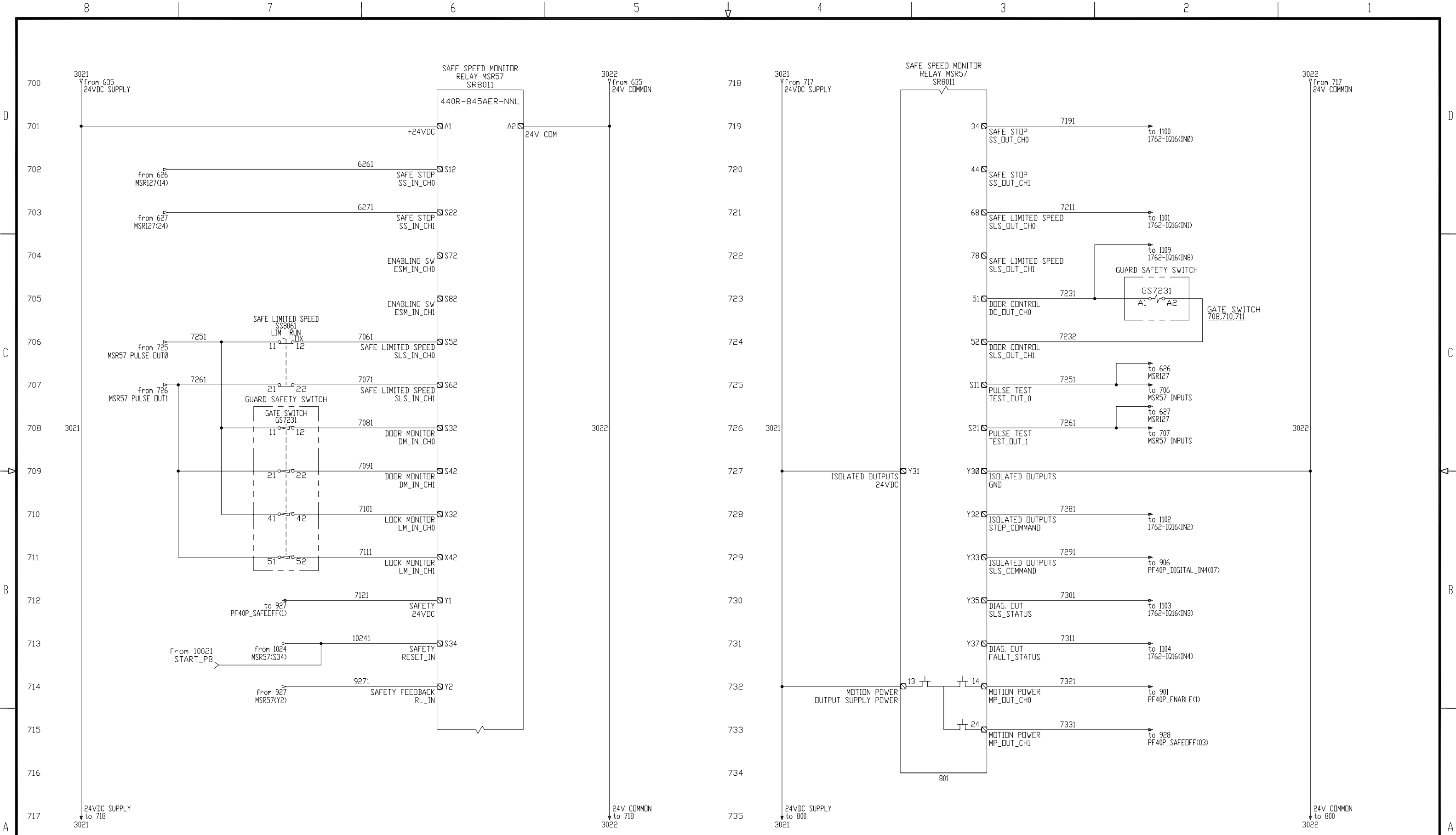




NOTES:
1. ALL WIRES TO BE xxxV, xx*, xxx.
2. OBSERVE DIRTY/CLEAN WIRING PRACTICES.
3. Dx/Cx MARKERS INDICATE WIRE WAY ROUTING FOR THE SELECTED WIRES (Dx = DIRTY, Cx = CLEAN)
4. ALL WIRES ARE #xx AWG, UNLESS OTHERWISE NOTED.
5. ALL WIRES ARE xxx, UNLESS OTHERWISE NOTED.
6. ALL GROUND WIRES ARE #xx AWG xxxxxx, UNLESS OTHERWISE NOTED.

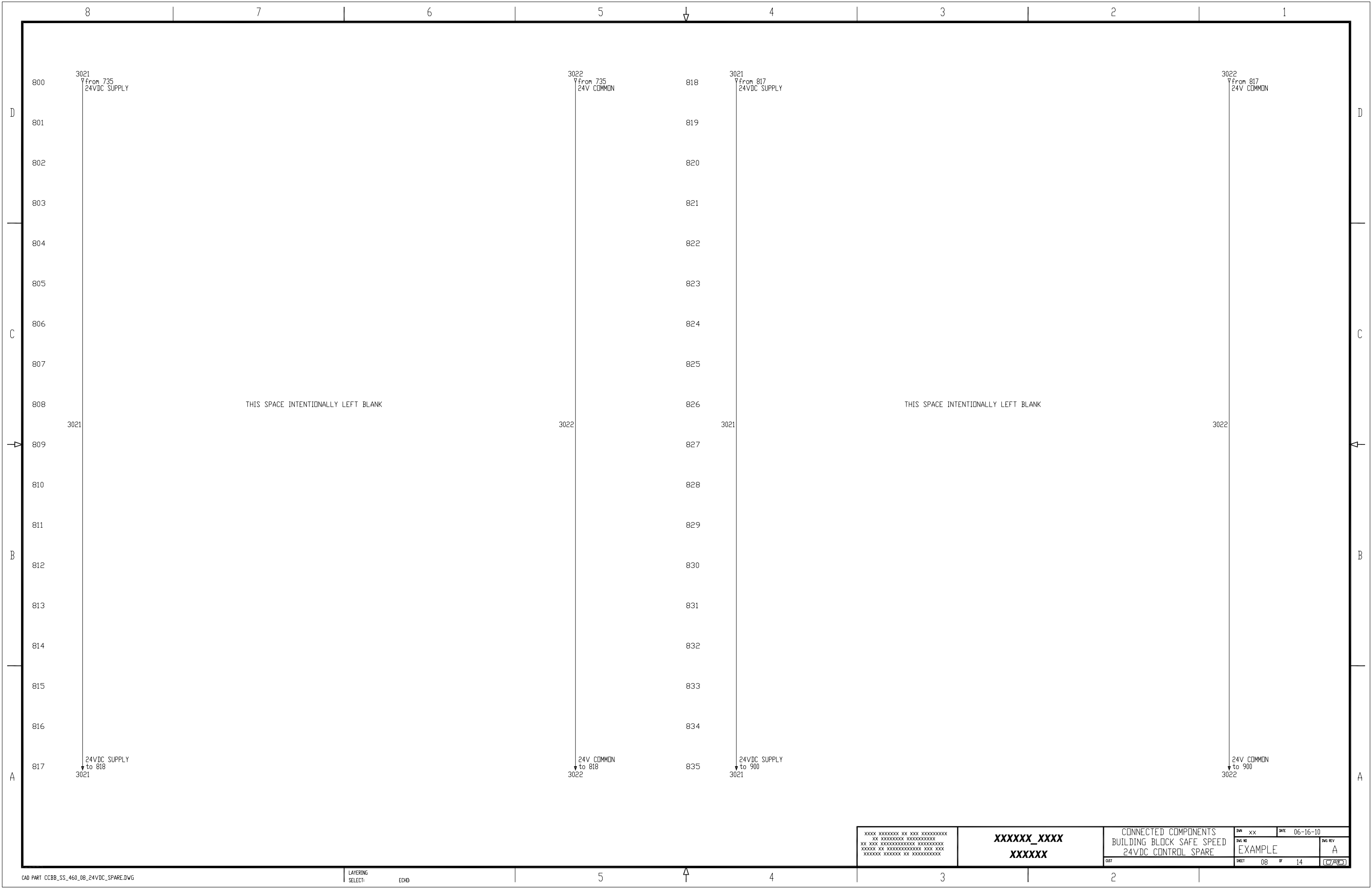
XXXXXX XXXXX XXXXXX
--

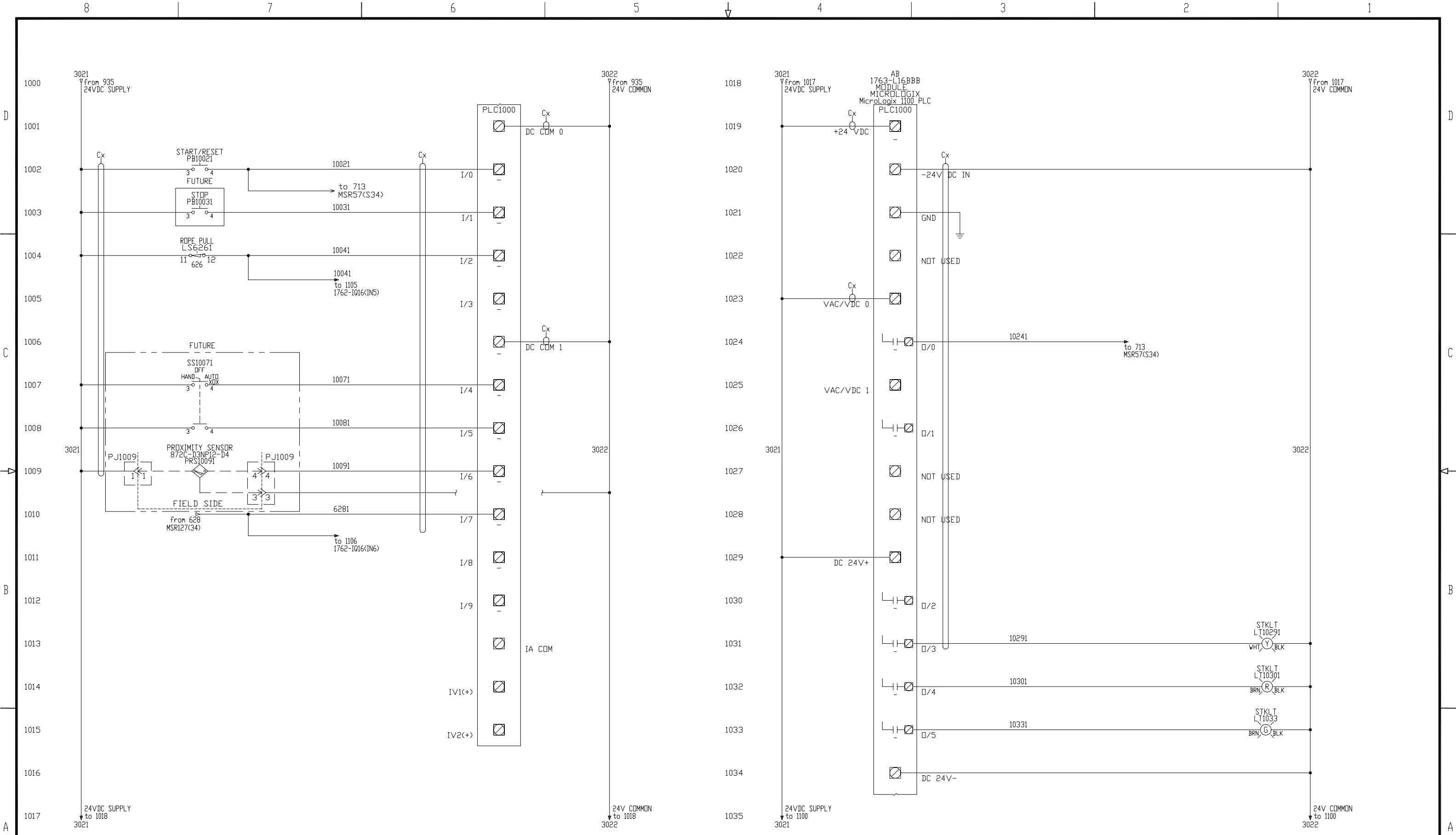




NOTES:
1. ALL WIRES TO BE xxxV, xx*, xxx.
2. OBSERVE DIRTY/CLEAN WIRING PRACTICES.
3. Dx/Cx MARKERS INDICATE WIRE WAY ROUTING FOR THE SELECTED WIRES (Dx = DIRTY, Cx = CLEAN)
4. ALL WIRES ARE #xx AWG, UNLESS OTHERWISE NOTED.
5. ALL WIRES ARE xxx, UNLESS OTHERWISE NOTED.

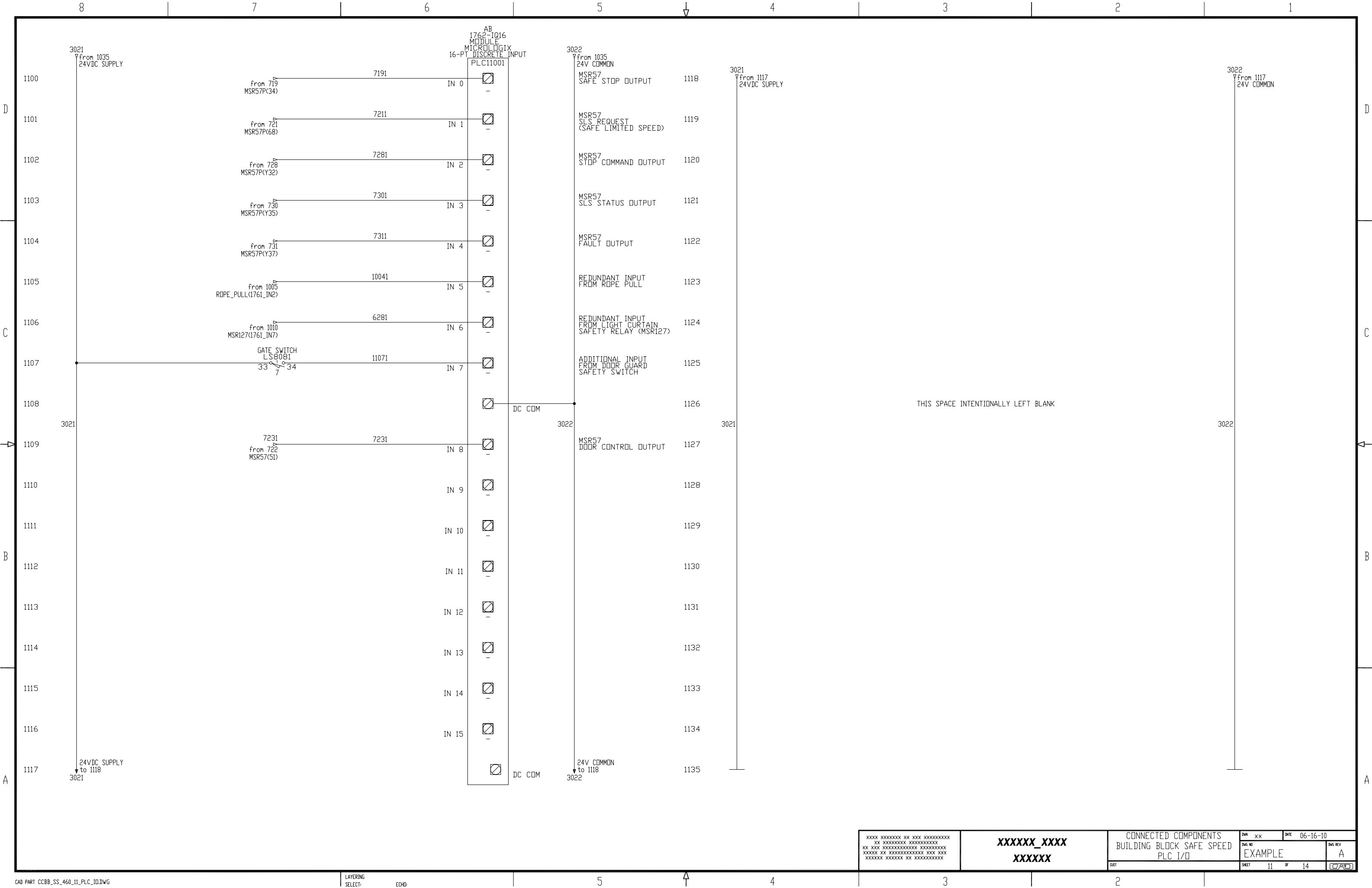
XXXX XXXXXXXX XX XXX XXXXXXXXXX XX XXX XXXXXXXXXX XXXXXXXXXX XX XXX XXXXXXXXXX XXXXXXXXXX XXXXXX XX XXXXXXXXXX XXX XXX XXXXXX XXXXXXXX XX XXXXXXXXXX	XXXXXX_XXXX XXXXXX	CONNECTED COMPONENTS		DWG XX	DATE 06-16-10	
		BUILDING BLOCK SAFE SPEED		DWG NO	EXAMPLE	DWG REV
	OUT	MSR57 SPEED MONITOR		SHEET 07	OF 14	CPO

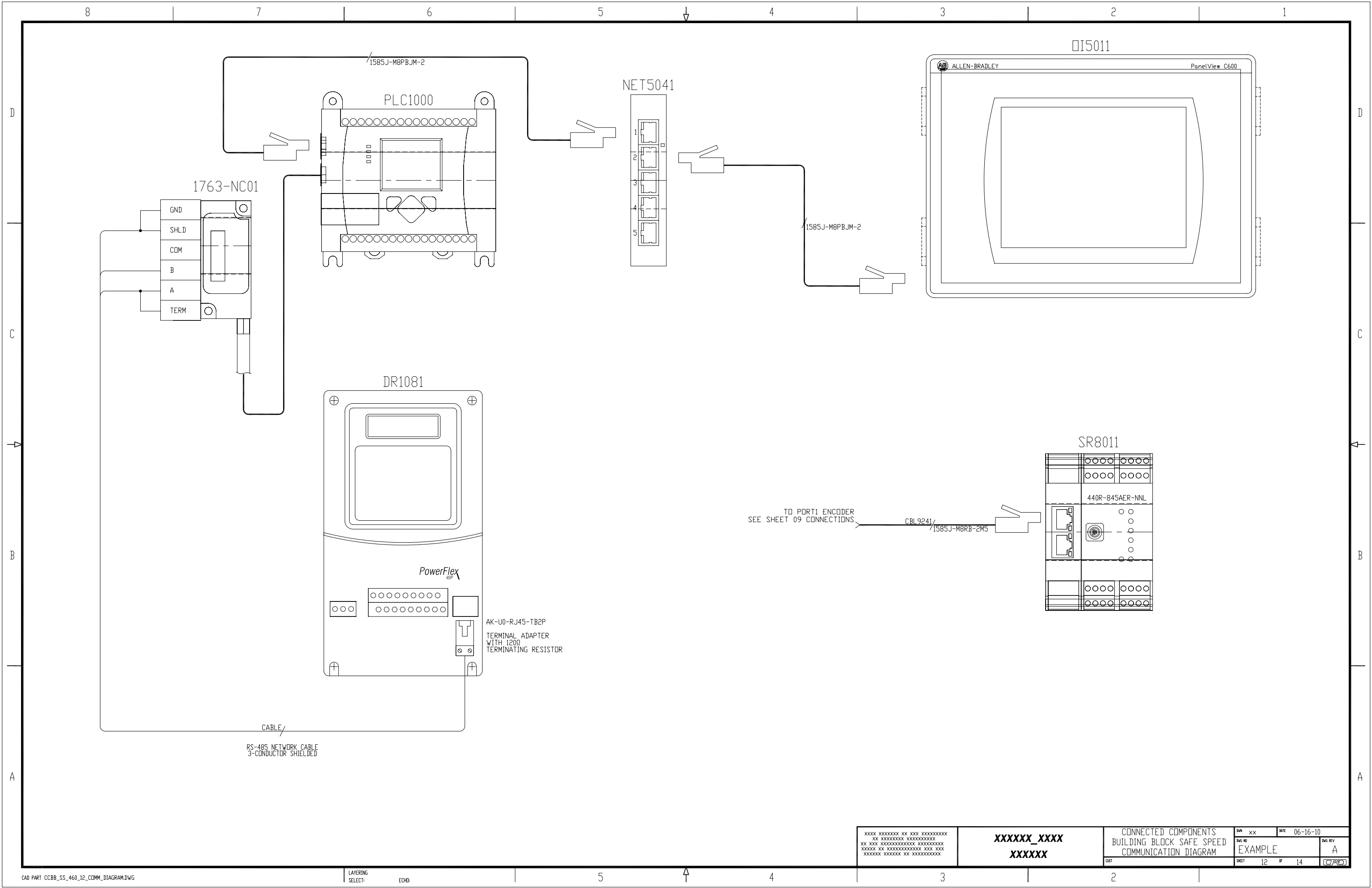




NOTES:
1. ALL WIRES TO BE xxxV, xx*, xxx.
2. OBSERVE DIRTY/CLEAN WIRING PRACTICES.
3. Dx/Cx MARKERS INDICATE WIRE WAY ROUTING FOR THE SELECTED WIRES (Dx = DIRTY, Cx = CLEAN)
4. ALL WIRES ARE #xx AWG, UNLESS OTHERWISE NOTED.
5. ALL WIRES ARE xxx, UNLESS OTHERWISE NOTED.
6. ALL GROUND WIRES ARE #xx AWG xxxxxx, UNLESS OTHERWISE NOTED.

XXXX XXXXXXXX XX XXX XXXXXXXXXX XX XXXXXXXXXXXX XXXXXXXXXXXX XXXXXX XX XXXXXXXXXXXXXXXX XXX XXX XXXXXXXX XXXXXXXX XX XXXXXXXXXXXX	XXXXXX_XXXX XXXXXX	CONNECTED COMPONENTS BUILDING BLOCK SAFE SPEED PLC I/O		DWG NO EXAMPLE	DWG REV A
		DATE 06-16-10	SHEET 10	OF 14	DATE 06-16-10





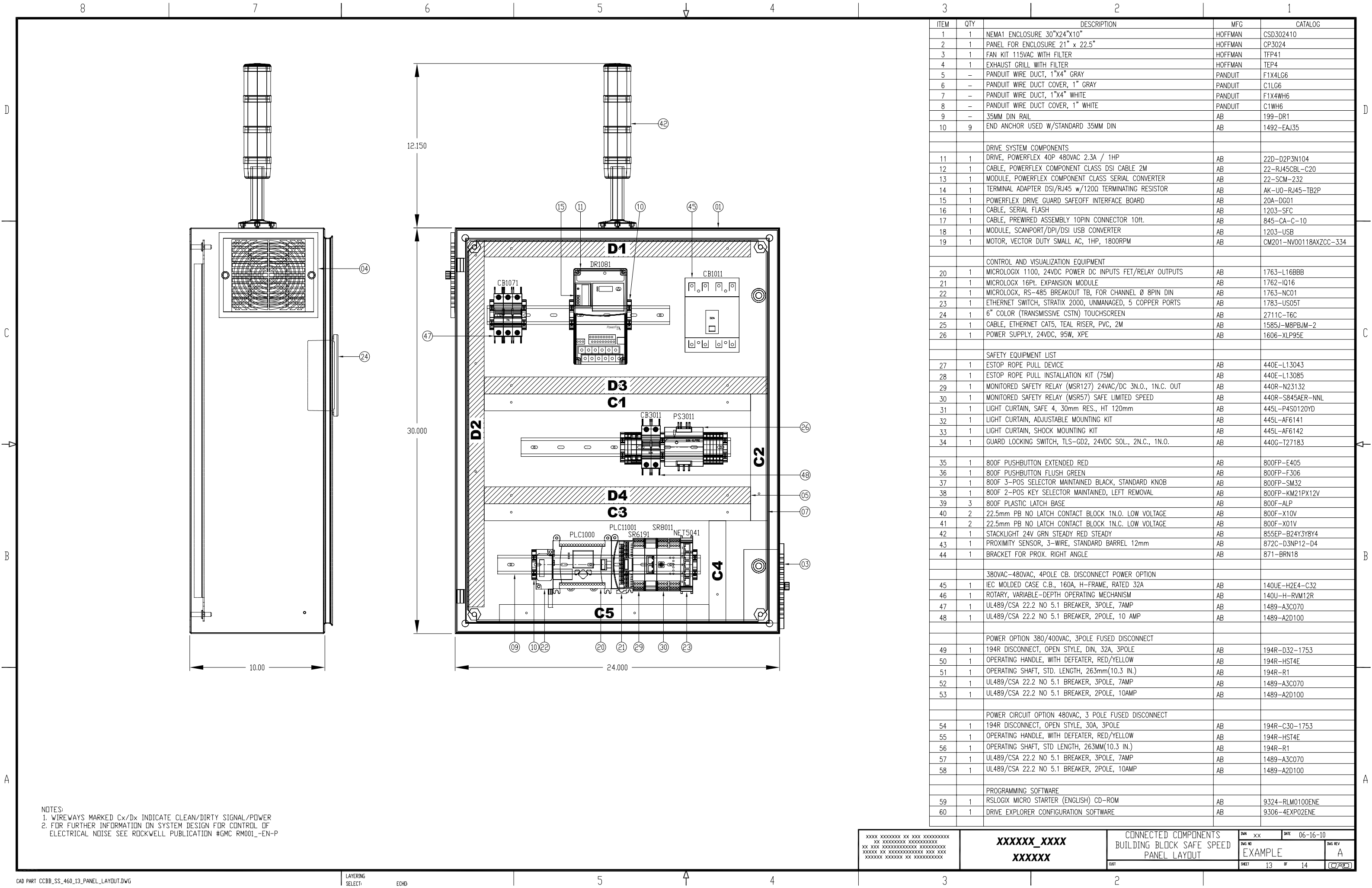
XXXX XXXXXXXX XX XXX XXXXXXXXXX
XX XXXXXXXXXX XXXXXXXXXX
XX XXX XXXXXXXXXX XXXXXXXXXX
XXXXXX XX XXXXXXXXXX XXX XXX
XXXXXX XXXXXXXX XX XXXXXXXXXX

XXXXXX_XXXX
XXXXXX

CONNECTED COMPONENTS
BUILDING BLOCK SAFE SPEED
COMMUNICATION DIAGRAM

DWG NO	DWG REV
EXAMPLE	A
SHEET 12	OF 14
CAB	

DATE 06-16-10



NOTES:
1. WIREWAYS MARKED Cx/Dx INDICATE CLEAN/DIRTY SIGNAL/POWER
2. FOR FURTHER INFORMATION ON SYSTEM DESIGN FOR CONTROL OF ELECTRICAL NOISE SEE ROCKWELL PUBLICATION #GMC RM001_-EN-P

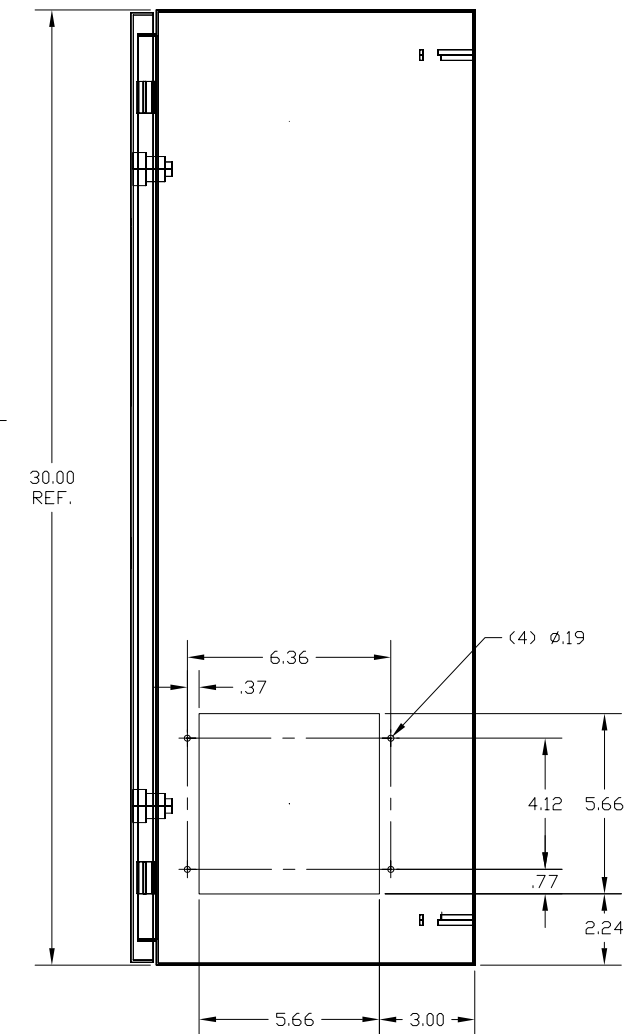
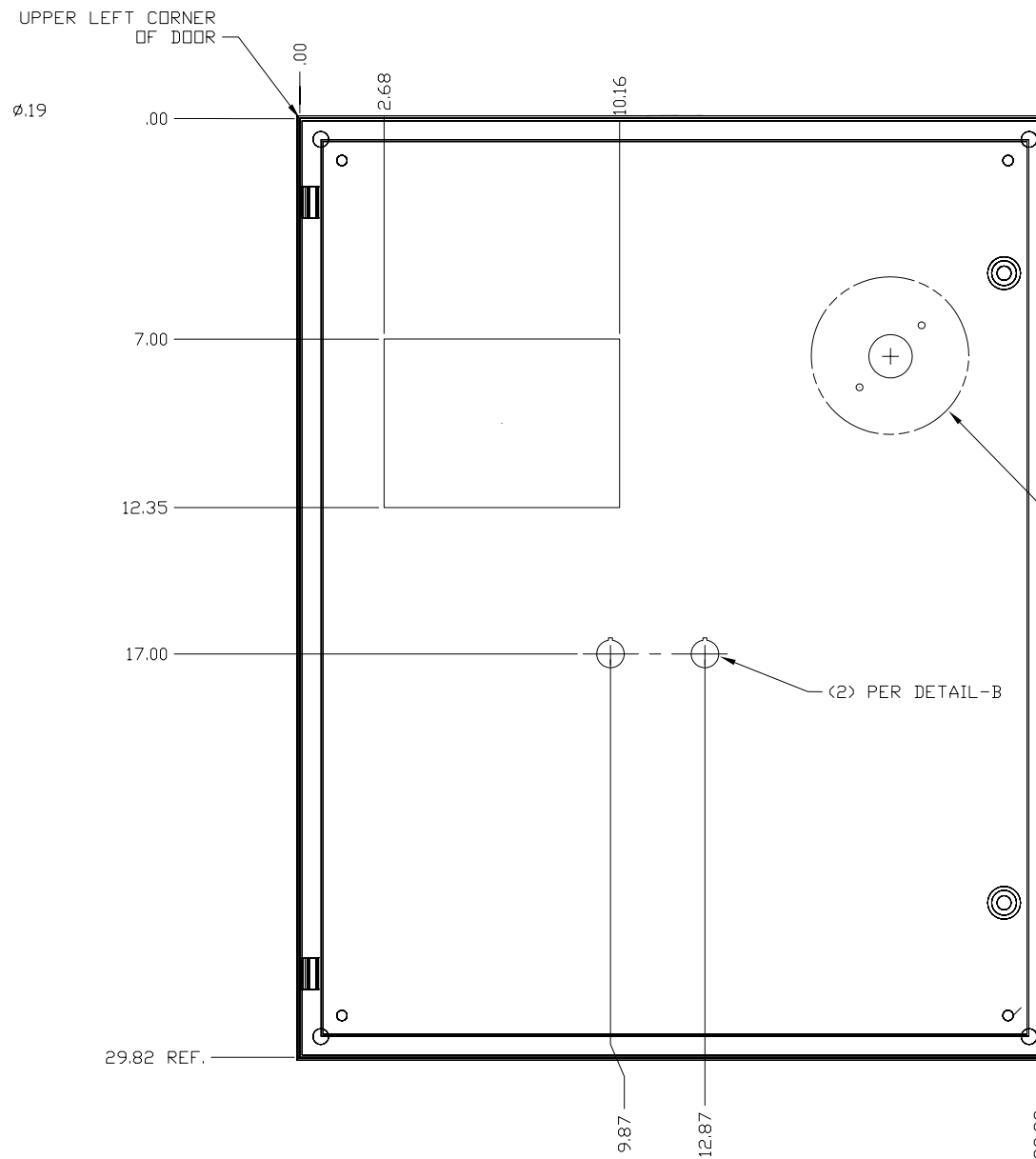
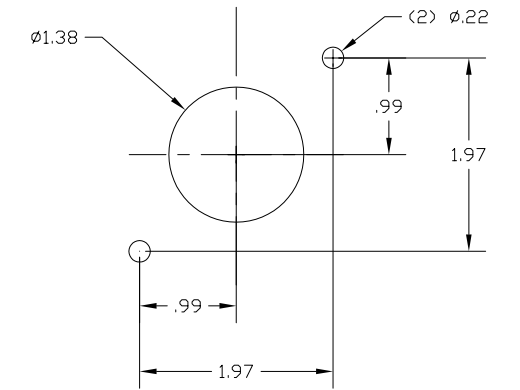
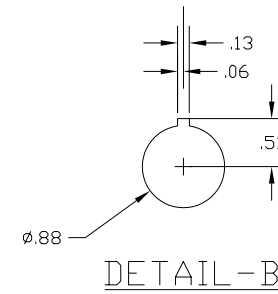
ITEM	QTY	DESCRIPTION	MFG	CATALOG
1	1	NEMA1 ENCLOSURE 30"x24"x10"	HOFFMAN	CSD302410
2	1	PANEL FOR ENCLOSURE 21" x 22.5"	HOFFMAN	CP3024
3	1	FAN KIT 115VAC WITH FILTER	HOFFMAN	TFP41
4	1	EXHAUST GRILL WITH FILTER	HOFFMAN	TEP4
5	-	PANDUIT WIRE DUCT, 1"x4" GRAY	PANDUIT	F1X4LG6
6	-	PANDUIT WIRE DUCT COVER, 1" GRAY	PANDUIT	C1LG6
7	-	PANDUIT WIRE DUCT, 1"x4" WHITE	PANDUIT	F1X4WH6
8	-	PANDUIT WIRE DUCT COVER, 1" WHITE	PANDUIT	C1WH6
9	-	35MM DIN RAIL	AB	199-DR1
10	9	END ANCHOR USED W/STANDARD 35MM DIN	AB	1492-EAJ35
DRIVE SYSTEM COMPONENTS				
11	1	DRIVE, POWERFLEX 40P 480VAC 2.3A / 1HP	AB	22D-D2P3N104
12	1	CABLE, POWERFLEX COMPONENT CLASS DSI CABLE 2M	AB	22-RJ45CBL-C20
13	1	MODULE, POWERFLEX COMPONENT CLASS SERIAL CONVERTER	AB	22-SCM-232
14	1	TERMINAL ADAPTER DSI/RJ45 w/1200 TERMINATING RESISTOR	AB	AK-U0-RJ45-TB2P
15	1	POWERFLEX DRIVE GUARD SAFE0FF INTERFACE BOARD	AB	20A-DG01
16	1	CABLE, SERIAL FLASH	AB	1203-SFC
17	1	CABLE, PREWIRED ASSEMBLY 10PIN CONNECTOR 10ft.	AB	845-CA-C-10
18	1	MODULE, SCANPORT/DPI/DSI USB CONVERTER	AB	1203-USB
19	1	MOTOR, VECTOR DUTY SMALL AC, 1HP, 1800RPM	AB	CM201-NV00118AXZCC-334
CONTROL AND VISUALIZATION EQUIPMENT				
20	1	MICROLOGIX 1100, 24VDC POWER DC INPUTS FET/RELAY OUTPUTS	AB	1763-L16BBB
21	1	MICROLOGIX 16Pt. EXPANSION MODULE	AB	1762-IQ16
22	1	MICROLOGIX, RS-485 BREAKOUT TB, FOR CHANNEL Ø 8PIN DIN	AB	1763-NC01
23	1	ETHERNET SWITCH, STRATIX 2000, UNMANAGED, 5 COPPER PORTS	AB	1783-US05T
24	1	6" COLOR (TRANSMISSIVE CSTN) TOUCHSCREEN	AB	2711C-T6C
25	1	CABLE, ETHERNET CAT5, TEAL RISER, PVC, 2M	AB	1585J-M8PBJM-2
26	1	POWER SUPPLY, 24VDC, 95W, XPE	AB	1606-XLP95E
SAFETY EQUIPMENT LIST				
27	1	ESTOP ROPE PULL DEVICE	AB	440E-L13043
28	1	ESTOP ROPE PULL INSTALLATION KIT (75M)	AB	440E-L13085
29	1	MONITORED SAFETY RELAY (MSR127) 24VAC/DC 3N.O., 1N.C. OUT	AB	440R-N23132
30	1	MONITORED SAFETY RELAY (MSR57) SAFE LIMITED SPEED	AB	440R-S845AER-NNL
31	1	LIGHT CURTAIN, SAFE 4, 30mm RES., HT 120mm	AB	445L-P4S0120YD
32	1	LIGHT CURTAIN, ADJUSTABLE MOUNTING KIT	AB	445L-AF6141
33	1	LIGHT CURTAIN, SHOCK MOUNTING KIT	AB	445L-AF6142
34	1	GUARD LOCKING SWITCH, TLS-GD2, 24VDC SOL., 2N.C., 1N.O.	AB	440G-T27183
380VAC-480VAC, 4POLE CB. DISCONNECT POWER OPTION				
45	1	IEC MOLDED CASE C.B., 160A, H-FRAME, RATED 32A	AB	140UE-H2E4-C32
46	1	ROTARY, VARIABLE-DEPTH OPERATING MECHANISM	AB	140U-H-RVM12R
47	1	UL489/CSA 22.2 NO 5.1 BREAKER, 3POLE, 7AMP	AB	1489-A3C070
48	1	UL489/CSA 22.2 NO 5.1 BREAKER, 2POLE, 10 AMP	AB	1489-A2D100
POWER OPTION 380/400VAC, 3POLE FUSED DISCONNECT				
49	1	194R DISCONNECT, OPEN STYLE, DIN, 32A, 3POLE	AB	194R-D32-1753
50	1	OPERATING HANDLE, WITH DEFEATER, RED/YELLOW	AB	194R-HST4E
51	1	OPERATING SHAFT, STD. LENGTH, 263mm(10.3 IN.)	AB	194R-R1
52	1	UL489/CSA 22.2 NO 5.1 BREAKER, 3POLE, 7AMP	AB	1489-A3C070
53	1	UL489/CSA 22.2 NO 5.1 BREAKER, 2POLE, 10AMP	AB	1489-A2D100
POWER CIRCUIT OPTION 480VAC, 3 POLE FUSED DISCONNECT				
54	1	194R DISCONNECT, OPEN STYLE, 30A, 3POLE	AB	194R-C30-1753
55	1	OPERATING HANDLE, WITH DEFEATER, RED/YELLOW	AB	194R-HST4E
56	1	OPERATING SHAFT, STD LENGTH, 263MM(10.3 IN.)	AB	194R-R1
57	1	UL489/CSA 22.2 NO 5.1 BREAKER, 3POLE, 7AMP	AB	1489-A3C070
58	1	UL489/CSA 22.2 NO 5.1 BREAKER, 2POLE, 10AMP	AB	1489-A2D100
PROGRAMMING SOFTWARE				
59	1	RSLOGIX MICRO STARTER (ENGLISH) CD-ROM	AB	9324-RLM0100ENE
60	1	DRIVE EXPLORER CONFIGURATION SOFTWARE	AB	9306-4EXP02ENE

XXXX XXXXXXXX XX XXX XXXXXXXX
XX XXXXXXXX XXXXXXXX
XXXXXX XX XXXXXXXX XXX XXX
XXXXXX XXXXXXXX XX XXXXXXXX

XXXXXX_XXXX
XXXXXX

CONNECTED COMPONENTS
BUILDING BLOCK SAFE SPEED
PANEL LAYOUT

DATE 06-16-10
REV 01
EXAMPLE
A



PER DETAIL-A,
(SEE SHEET 2 FOR ALL
OPERATOR OPTION
LOCATIONS)

DOOR MODIFICATION

-01	1	HOFFMAN PART CSD302410	ANSI 61 GRAY
PART NO.	CHG. CHAR.	MATERIAL	SURFACE TREATMENT

CAD PART CCBB_SS_460_14_ENCLOSURE_DOOR_LAYOUT.DWG

LAYERING
SELECT:

ECHO:

```

XXXX XXXXXXXX XX XXX XXXXXXXXXX
  XX XXXXXXXXX XXXXXXXXXX
XX XX XXXXXXXXXXXXXX XXXXXXXXX
XXXXX XX XXXXXXXXXXXXX XX XX
XXXXXX XXXXXX XX XXXXXXXXXX

```

XXXXXX_XXXX
XXXXXX

<p>CONNECTED COMPONENTS BUILDING BLOCK SAFE SPEED ENCLOSURE DOOR LAYOUT</p>

DWN	xx	DATE	06-16-10
DWG NO	EXAMPLE		DWG REV
			A
SHEET	14	OF	14
			